



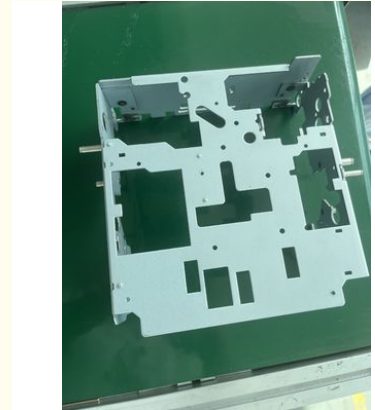
Customizable Durable Precision Metal Parts for ATM Cash Dispensing Unit W 387mm SECC-T1N

Our Product Introduction

for more products please visit us on metalstamp-parts.com

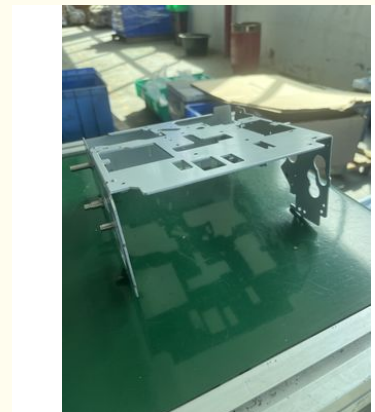
Basic Information

- Minimum Order Quantity: 1000
- Price: \$ +5~20+Pcs
- Delivery Time: 15-20
- Payment Terms: L/C,D/A,D/P,T/T,Western Union,MoneyGram
- Supply Ability: 3000+pcs+Month

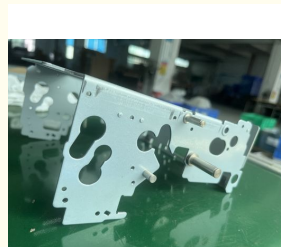
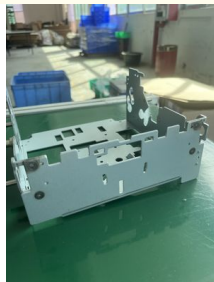


Product Specification

- Material: SECC-T1N
- Rivet Material: SUM22D
- Specifications: L=561mm;W=387mm
- Material Thickness: T=2mm
- Production Processes: Material Cutting, Punching, Folding, Shaping, Tapping, Riveting, Forming, Welding, Punching, Surface Pressing, Shaping, Cleaning, Full Inspection Packaging
- Highlight: **ATM Cash Dispensing Unit Metal Parts,
Durable Precision Metal Parts,
Customizable Precision Metal Parts**



More Images



Product Description

Product Name: Precision Metal Parts for ATM Cash Dispensing Unit

Product Overview:

We manufacture high-precision metal components specifically designed for the internal mechanisms of ATM cash dispensing modules. These parts are essential to the reliable performance of note transport, separation, alignment, and dispensing within the unit. Engineered to meet original equipment standards, our components are compatible with leading ATM brands including NCR, Diebold, Wincor, GRG, and Hyosung.

Main Components Offered:

Brackets and Mounting Frames
Picking Arms / Separator Fingers
Guide Rails and Channels
Metal Gears and Gear Shafts
Spring Plates and Leaf Springs
Steel Pins and Axles
Positioning Blocks and Link Plates

Material Specifications:

Stainless Steel (SUS304, SUS430): Corrosion-resistant, high durability

Carbon Steel (Q235, 45# Steel): Cost-effective, suitable for structural parts

Aluminum Alloy (6061, 5052): Lightweight, high machinability

Spring Steel (65Mn, SK5): Ideal for components requiring elastic performance

Manufacturing Capabilities:

CNC Turning & Milling
Laser Cutting / Wire EDM
Sheet Metal Fabrication & Bending
Precision Grinding & Drilling
Surface Finishing Options: Zinc Plating, Black Oxide, Anodizing, Electrophoresis
Tolerance Control: $\pm 0.01\text{mm}$ to $\pm 0.05\text{mm}$ as per drawing requirements

Key Features:

High dimensional accuracy for seamless integration
Designed for long service life under high-cycle operation
100% customizable based on technical drawings or samples
OEM & ODM services available

Application Scope:

ATM Cash Dispenser Repair & Maintenance
Spare Part Replacement
OEM Component Supply for ATM Assembly Lines
Reverse Engineering for Obsolete Parts

Packaging & Delivery:

Individually packed with protective material to prevent transit damage
Labeled with part number and material batch for traceability
Export-ready packaging; supports third-party inspection and certification upon request



Shenzhen Dongfeng Shengshi Hardware products Co., LTD



18682375931



905004489@qq.com



metalstamp-parts.com

Building 3, No.8 Zhenxing Road, Loucun Community, Xinhua Street, Guangming District, Shenzhen