



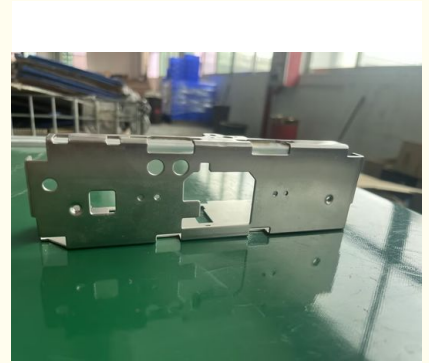
High-Precision SPCC-SD ATM Structural and Functional Components

Our Product Introduction

for more products please visit us on metalstamp-parts.com

Basic Information

- Minimum Order Quantity: 1000
- Price: \$ +1~10+Pcs
- Delivery Time: 15-20
- Payment Terms: L/C, D/A, D/P, T/T, Western Union, MoneyGram
- Supply Ability: 3000+pcs+Month



Product Specification

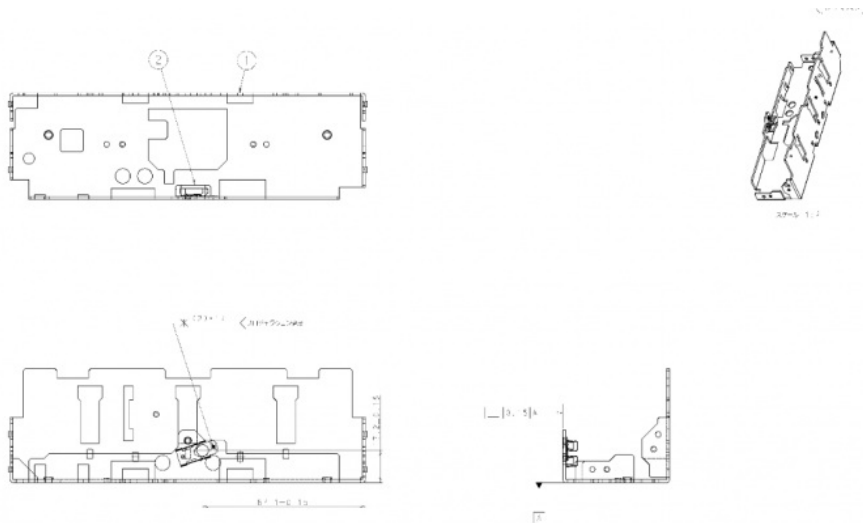
- Material: SPCC-SD
- Surface Treatment: Electrolytic Nickel
- Specifications: L=187.5MM, W=42MM, H=27MM
- Application: Automotive, Electronics, Machinery, ATM, etc.
- Working Procedure: Cutting Punching Tapping Folding Forming Electroplating Spot Welding Full Inspection Packaging



More Images



Product Description



SPCC-SD Material ATM Components Product Description

Product Overview

SPCC-SD is a cold-rolled carbon steel sheet with a smooth and uniform surface, widely used in precision sheet metal parts, including ATM (Automated Teller Machine) components. ATM components made from SPCC-SD material offer high strength, excellent machinability, and reliable performance, making them suitable for various structural and functional parts within ATMs.

Product Features

High Strength and Durability – Provides good mechanical properties and structural integrity.

Smooth Surface – The SD (Smooth Finish) ensures a refined surface for improved appearance and easy coating or plating.

Good Formability – Ideal for stamping, bending, and welding processes, ensuring precise shaping.

Corrosion Resistance – Can be treated with anti-rust coatings, electroplating, or powder coating to enhance longevity.

Cost-Effective – Offers a balance of strength and affordability, making it a preferred choice for industrial applications.

Common ATM Applications

Structural Frames – Internal support frames for ATM machines.

Cash Dispenser Modules – Housing components for dispensing mechanisms.

Card Reader Components – Structural parts for secure and accurate card reading.

Security Locks and Covers – Panels and enclosures to protect ATM mechanisms.

Internal Brackets and Mounting Plates – Support structures for electronic and mechanical assemblies.

Surface Treatment Options

Electro-galvanization – Provides anti-corrosion properties.

Powder Coating – Enhances durability and aesthetics.

Electrophoresis Coating – Improves rust resistance.

Painting or Spraying – Custom color options for branding and protection.

Manufacturing Processes

Precision Stamping – Ensures high-accuracy parts with consistent dimensions.

Bending and Forming – For structural and enclosure components.

Welding and Assembly – Used for reinforced parts.

Surface Finishing – Enhances appearance and durability.

For customized SPCC-SD ATM components, specific dimensions, surface treatment, and functional requirements can be tailored to meet precise project needs.



Shenzhen Dongfeng Shengshi Hardware products Co., LTD



18682375931



905004489@qq.com



metalstamp-parts.com

Building 3, No.8 Zhenxing Road, Loucun Community, Xinhui Street, Guangming District, Shenzhen