



## Precision aluminum electroplated small pull rod

### Our Product Introduction

for more products please visit us on [metalstamp-parts.com](http://metalstamp-parts.com)

#### Basic Information

- Minimum Order Quantity: 1000
- Price: \$ +1~10+Pcs
- Delivery Time: 15-20
- Payment Terms: L/C, D/A, D/P, T/T, Western Union, MoneyGram
- Supply Ability: 3000+pcs+Month



#### Product Specification

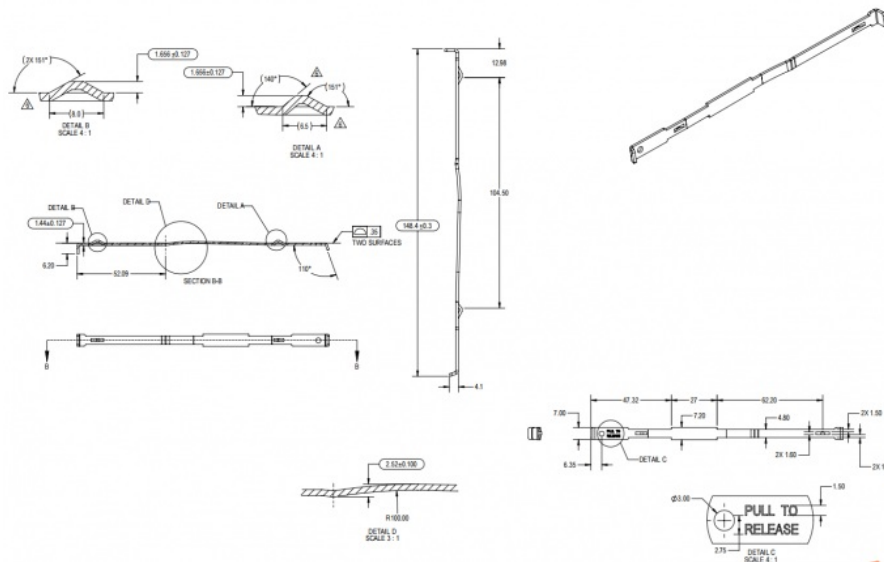
- Material: Aluminum
- Surface Treatment: Electrophoresis
- Specifications: L=148.4MM, W=7MM, H=4.1MM
- Application: Automotive, Electronics, Machinery, Etc.
- Working Procedure: Smooth Delivery And Unloading - Electrophoresis - Full Inspection - Packaging And Shipping



#### More Images



## Product Description



### Product Description of Small Rod Hardware Components

#### Product Overview

Small rod hardware components are mechanical accessories used for connection, support, or adjustment. They are typically made of metal materials such as stainless steel, aluminum alloy, carbon steel, or copper. These components are widely used in furniture, automotive, machinery, electronics, sports equipment, and other industries.

#### Product Features

**High Strength and Durability** – Made from high-quality metal materials, providing excellent load-bearing capacity and fatigue resistance.

**Corrosion Resistance** – Surface treatments such as electroplating, oxidation, or coating enhance resistance to oxidation and corrosion, making them suitable for various environments.

**Precision Machining** – Manufactured using stamping, bending, welding, turning, and other processes to ensure accurate dimensions and smooth assembly.

**Adjustable Design** – Some rods feature adjustable threads or joint structures to meet different installation requirements.

**Lightweight and Aesthetic** – Some products use aluminum alloy or stainless steel for a balance of strength and lightweight properties with an attractive appearance.

#### Common Applications

**Furniture Industry** – Used in drawers, cabinet doors, folding tables, and chairs.

**Automotive Components** – Applied in door brackets, seat adjustment mechanisms, etc.

**Machinery Equipment** – Used for transmission, connection, or fixation.

**Electronic Devices** – Applied in support structures or movable connection parts.

#### Surface Treatment Options

**Zinc/Nickel/Chrome Plating** – Enhances corrosion resistance and improves gloss.

**Anodizing** – Suitable for aluminum alloys, increasing wear resistance and aesthetics.

**Spraying/Electrophoresis** – Provides various color choices and enhances rust resistance.

**Brushed/Polished Finish** – Improves surface texture and reduces the impact of scratches.

#### Manufacturing Processes

**Stamping** – High-precision stamping using molds.

**Bending** – Forming into specific angles according to design needs.

**Turning/Milling** – Producing high-precision components such as threads or shafts.

**Welding/Riveting** – Assembling more complex rod structures.

For customized small rod hardware components, specifications such as size, material, surface treatment, and application requirements can be provided to match the most suitable product solution.



**Shenzhen Dongfeng Shengshi Hardware products Co., LTD**



18682375931



905004489@qq.com



[metalstamp-parts.com](http://metalstamp-parts.com)

Building 3, No.8 Zhenxing Road, Loucun Community, Xinhua Street, Guangming District, Shenzhen