



## Metal Brackets Customized Fabricating Black Metal Brackets Spraying Service

### Basic Information

- Place of Origin: China
- Minimum Order Quantity: 1000
- Price: \$ +1~10+Pcs
- Delivery Time: 15-20
- Payment Terms: L/C, D/A, D/P, T/T, Western Union, MoneyGram
- Supply Ability: 3000+pcs+Month



### Product Specification

- Model Number: WZ3513G
- Material: Steel , Iron ,Stainless Steel, Aluminum, Brass, Copper Etc.
- Process: Blanking, Stamping, Punching, Deep Drawing, Bending, Coining, Curling,Forming, Threading,welding, Tapping, Riveting, Cnc Machining, CNC Milling
- Surface Treatment: Zinc Plating, Nickel Plating, Powder Coated , Paint ,Brushed Etc
- Technology: OB Hole,Rivet,Brige,Caes,Thread
- Tolerance: +/-0.002~+/-0.005mm
- Quality Assurance: ISO9001:2015, ISO13485:2016, RoHs, TUV
- Service: Customize ODM OEM
- Length: 40mm
- Width: 19mm
- Height: 5mm
- Highlight: Customized Fabricating Metal Brackets



Shenzhen Dongfeng Shengshi Hardware products Co., LTD



Choose us

Combining affordability and quality



Original price sales



Multiple specifications



Sufficient raw materials



Fast processing



Exquisite craftsmanship



Invoicable

Material	<u>Stainless steel</u>	Delivery time	<u>20days</u>
Price	<u>\$1~10/pcs</u>	Service	<u>Customize ODM OEM</u>
specifications	<u>L=40MM,W=19MM,</u>	Packing	12 in a box

# About Us

Direct wholesale, self-produced and self sold



Shenzhen Dongfeng Shengshi Hardware products Co., LTD



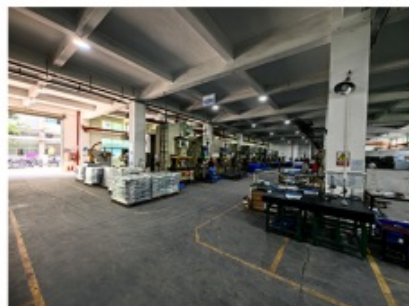
Company Profile



Shenzhen Dongfeng Shengshi Hardware Products Co., Ltd. was established in 2003 and is an ISO9001 certified factory. The company has been committed to the research and development, production and sales of hardware molds, ATM components, precision hinges, stamping parts, mechanical components, heat sinks, display hooks, and anti-theft series products. The company's main markets include North America, South America, Europe, Japan, Australia, and mainland China.

The company has complete equipment, mainly including: 48 large and small punches, 40 hand beer machines, 20 tapping machines, 25 drilling machines, 15 machining equipment, 6 lathes, 8 milling machines, 4 wire cutting machines, 5 precision grinders, CNC machining centers, spark machines, three production lines, and the quality management department's projectors, anemometer/cubic, hardness meters, altimeters, film thickness testers and other testing equipment.

The company adheres to the corporate tenet of "customer centeredness, quality as the foundation, continuous improvement and innovation, and continuous provision of high-quality products", constantly explores and strives to establish a good external image for the prosperous era of Dongfeng. We warmly welcome people from all walks of life to establish cooperative relationships with our company, work hand in hand, and create brilliance together!





After sales instructions



### 1. Are you a factory?

A: Yes, we are a factory with 21 years of experience, dedicated to the research and development, production, and sales of hardware molds, ATM components, precision hinges, stamping parts, mechanical components, heat sinks, display hooks, and anti-theft series products. Our main markets include North America, South America, Europe, Japan, Australia, and mainland China

### 2. What about the lead time?

A: 15-30 working days for mass production.

### 3. Do you have any MOQ limit for

A: Low MOQ, 1pc for sample checking is available.

### 4. How do you ship the goods and how long does it take to arrive?

A: Ship by DHL, UPS, FedEx or TNT. It takes 3-5 days to arrive. Airline and sea shipping also optional.

## 5. How to proceed an order for?

- 1) Firstly let us know your requirements or application.
- 2) Secondly We quote according to your requirements or our suggestions.
- 3) Thirdly customer confirms the samples and places deposit for formal order.
- 4) Fourthly We arrange the production.

## 6. what to be clearly indicated when I send you drawing?

A: You are kindly requested to let us know the raw material, finish and quantity at least.

## 7: What if we are not completely satisfied with the parts we re-

A: We will replace any parts that you are not satisfied with free of charge. If we make a mistake, we will work with you to correct it.



Factory



+ Factory supply

After sale



+ Multiple specifications

Examination



+ well stocked

Specifications



+ On time delivery

High quality



Integrity

Tailor-made



Support

+ integrity  
management

+ support  
customization

Shenzhen Dongfeng Shengshi Hardware products Co., LTD

Item	Description
Product Name	Metal Brackets Customized Fabricating Black Metal Brackets Spraying Service
Working Process	Blanking, stamping, Punching, deep drawing, bending, Coining, Curling,Forming, threading,welding, tapping, riveting, cnc machining, CNC Milling
Material	Steel , Iron ,Stainless steel, Aluminum, Brass, Copper etc.,WZ3513G(according to customer's requirements)
Surface Treatment	Galvanized, Zinc, nickel, chrome-plated, Powder Coating, Polishing, Spraying, Anodizing, Pickling, E-coating, etc.
Packing	Inner-Plastic Bag; Outer -Standard Carton Box + Pallet/Wood Case
Application	Construction, Transportation, machinery, home appliance, electronic & electric appliance, Agricultural Equipments
Equipments	stamping/punching machine, CNC bending machine, CNC Laser cutting machine
File Format	Solidworks,Pro/Engineer,Auto CAD,PDF,JPG
Service	Warm and quick response service provided by the professional Export Sales Team with many years' experience in handling exports to the US, Europe, Japan and other countries and regions.
Inspection	100% QC as to each products

*Our customized precision metal brackets, crafted from high-quality stainless steel and aluminum, are tailored to meet your exact specifications. We provide advanced spraying services to enhance the durability and aesthetic appeal of the brackets, ensuring they are suitable for a wide range of applications.*

#### Detailed Features:

##### High-Quality Materials:

**Stainless Steel:** Superior corrosion resistance, strength, and durability, ideal for harsh environments.

**Aluminum:** Lightweight with excellent corrosion resistance, perfect for applications where weight is a concern.

##### Precision Manufacturing Techniques:

**Laser Cutting:** Provides highly accurate cuts with smooth edges, capable of intricate designs.

**Stamping:** Produces complex shapes and detailed designs with high precision and consistency.

**Bending:** Achieves precise angles and radii for complex parts, maintaining structural integrity and strength.

##### Advanced Spraying Services:

**Powder Coating:** Offers a durable, high-quality finish that protects against corrosion and wear.

**Painting:** Provides aesthetic enhancement and additional protective coating.

**Polishing and Brushing:** Enhance the aesthetic appeal and smoothness of the parts.

##### Special Features:

**Custom Perforations:** Tailored holes, slots, and patterns to meet specific requirements.

**Threading:** Accurate threading for screws and fasteners.

**Welding and Assembly:** High-quality welding and assembly for integrated solutions.

## Mechanical Properties:

**Strength and Durability:** Engineered to meet the load-bearing and durability requirements of various applications.

**Flexibility:** Adjustable designs to fit specific application needs.

## Quality Assurance:

**Inspection:** Thorough quality checks at each stage of production.

**Certifications:** Compliance with industry standards and certifications.

**Testing:** Mechanical and environmental testing to ensure reliable performance.

## Applications:

**Automotive:** Brackets and supports for vehicle components.

**Electronics:** Enclosures and mounts for electronic devices.

**Construction:** Structural brackets and supports.

**Aerospace:** Precision parts for aircraft and spacecraft.

**Industrial Equipment:** Custom brackets and components for machinery.

## Why Choose Our Services:

**Expertise:** Extensive experience in precision metal fabrication.

**Customization:** Tailored solutions to meet specific project requirements.

**Technology:** Advanced manufacturing techniques for precision and efficiency.

**Quality:** Commitment to delivering high-quality, reliable parts.

**Customer Service:** Dedicated support from design consultation to final delivery.

**Contact Us Today:** Ready to enhance your project with our customized precision stainless steel and aluminum small metal brackets with spraying services? Contact us today to discuss your specific requirements and discover how our expertise can provide the perfect solution. With our comprehensive customization options and unwavering commitment to quality, we are your trusted partner for all your metal fabrication needs.



**Shenzhen Dongfeng Shengshi Hardware products Co., LTD**



18682375931



905004489@qq.com



metalstamp-parts.com

Building 3, No.8 Zhenxing Road, Loucun Community, Xinhua Street, Guangming District, Shenzhen