



Customized CNC Stainless Steel Pipe Supports Sheet Metal Metal Tube Clamps

Our Product Introduction

for more products please visit us on metalstamp-parts.com

Basic Information

- Place of Origin: China
- Minimum Order Quantity: 1000
- Price: \$ +1~10+Pcs
- Delivery Time: 15-20
- Payment Terms: L/C, D/A, D/P, T/T, Western Union, MoneyGram
- Supply Ability: 3000+pcs+Month



Product Specification

- Material: SUS304
- Specifications: H=20MM, T=1.5MM, D=90MM
- Surface Treatment: Electro galvanizing Or Customized
- Type: Tube Clamps, Quick Lock Install Hose Clamp, Accessories, Heavy Duty Pipe Clamp, pipe Saddle Clamp
- Finish: Coating, Electrical Zinc Galvanized/HDG
- Oem: Accepted
- Highlight: **CNC Stainless Steel Pipe Supports, Customized Stainless Steel Pipe Supports, Sheet Metal Metal Tube Clamps**

Product Description

Our Product Introduction

for more products please visit us on metalstamp-parts.com

Shenzhen Dongfeng Shengshi Hardware products Co., LTD



Choose us

Combining affordability and quality

Original price sales

Multiple specifications

Sufficient raw materials

Fast processing

Exquisite craftsmanship

Invoicable



Material	<u>SUS304</u>	Delivery time	<u>20days</u>
Price	<u>\$1~10/pcs</u>	surface treatment	<u>Electrogalvanizing</u>
specifications	<u>H=20MM</u>	Packing	12 in a box

About Us

Direct wholesale, self-produced and self sold



Shenzhen Dongfeng Shengshi Hardware products Co., LTD



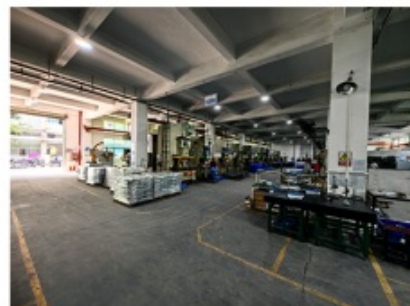
Company Profile



Shenzhen Dongfeng Shengshi Hardware Products Co., Ltd. was established in 2003 and is an IOS9001 certified factory. The company has been committed to the research and development, production and sales of hardware molds, ATM components, precision hinges, tampering parts, mechanical components, heat sinks, display hooks, and anti-theft series products. The company's main markets include North America, South America, Europe, Japan, Australia, and mainland China.

The company has complete equipment, mainly including: 48 large and small punches, 40 hand beer machines, 20 tapping machines, 25 drilling machines, 15 machining equipment, 6 lathes, 8 milling machines, 4 wire cutting machines, 5 precision grinders, CNC machining centers, spark machines, three production lines, and the quality management department's projectors, anime/cubic, hardness meters, altimeters, film thickness testers and other testing equipment.

The company adheres to the corporate tenet of "customer centeredness, quality as the foundation, continuous improvement and innovation, and continuous provision of high-quality products", constantly explores and strives to establish a good external image for the prosperous era of Dongfeng. We warmly welcome people from all walks of life to establish cooperative relationships with our company, work hand in hand, and create brilliance together!





After sales instructions



1. Are you a factory?

A: Yes, we are a factory with 21 years of experience, dedicated to the research and development, production, and sales of hardware molds, ATM components, precision hinges, stamping parts, mechanical components, heat sinks, display hooks, and anti-theft series products. Our main markets include North America, South America, Europe, Japan, Australia, and mainland China

2. What about the lead time?

A: 15-30 working days for mass production.

3. Do you have any MOQ limit for

A: Low MOQ, 1pc for sample checking is available.

4. How do you ship the goods and how long does it take to arrive?

A: Ship by DHL, UPS, FedEx or TNT. It takes 3-5 days to arrive. Airline and sea shipping also optional.

5. How to proceed an order for?

- 1) Firstly let us know your requirements or application.
- 2) Secondly We quote according to your requirements or our suggestions.
- 3) Thirdly customer confirms the samples and places deposit for formal order.
- 4) Fourthly We arrange the production.

6. what to be clearly indicated when I send you drawing?

A: You are kindly requested to let us know the raw material, finish and quantity at least.

7: What if we are not completely satisfied with the parts we re-

A: We will replace any parts that you are not satisfied with free of charge. If we make a mistake, we will work with you to correct it.



Factory



+ Factory supply

After sale



+ Multiple specifications

Examination



+ well stocked

Specifications



+ On time delivery

High quality



Integrity

Tailor-made



Support

Item	Description
Product Name	Customized CNC Stainless Steel Pipe Supports Sheet Metal Metal Tube Clamps
Working Process	Blanking, stamping, Punching, deep drawing, bending, Coining, Curling, Forming, threading, welding, tapping, riveting, cnc machining, CNC Milling
Material	carbon steel, Stainless steel Aluminum, copper, brass, bronze (according to customer's requirements)
Surface Treatment	Galvanized, Zinc, nickel, chrome-plated, Powder Coating, Polishing, Spraying, Anodizing, Pickling, E-coating, etc.
Packing	Inner-Plastic Bag; Outer -Standard Carton Box + Pallet/Wood Case
Application	Automobiles, Construction, Transportation, Furniture, machinery, home appliance, electronic & electric appliance, Agricultural Equipments
Equipments	stamping/punching machine, CNC bending machine, CNC Laser cutting machine, 5-250T punching machines, Welding Manapulator
Thickness	0.5mm~12mm
File Format	Solidworks, Pro/Engineer, Auto CAD, PDF, JPG
Service	Warm and quick response service provided by the professional Export Sales Team with many years' experience in handling exports to the US, Europe, Japan and other countries and regions.
Inspection	100% QC as to each products

Our customized CNC service offers precision manufacturing for aluminum and stainless steel fasteners, along with sheet metal processing technology and stamping parts. Tailored to meet the unique requirements of our clients, our CNC machining services provide high-quality, accurate, and reliable components for a variety of applications.

Key Features:

Customized CNC Service: Our CNC machining service is fully customizable, allowing us to produce fasteners and stamping parts according to the specific dimensions, shapes, and designs provided by our clients. From simple to complex geometries, we can accommodate a wide range of customization needs.

Aluminum and Stainless Steel Materials: We specialize in machining both aluminum and stainless steel materials, offering versatility and durability for various applications. These materials are known for their excellent strength-to-weight ratios, corrosion resistance, and suitability for precision machining.

Sheet Metal Processing Technology: In addition to CNC machining, we also offer sheet metal processing technology, including cutting, bending, and forming. This allows us to create intricate sheet metal components with high precision and accuracy.

Stamping Parts: Our stamping capabilities enable us to produce stamped parts with precision and efficiency. Whether it's simple brackets or complex components, our stamping process ensures consistent quality and fast turnaround times.

Quality Assurance: We maintain strict quality control measures throughout the manufacturing process to ensure that each component meets our high standards for precision and reliability. From material selection to final inspection, we prioritize quality at every step.

Applications:

Automotive industry: Fasteners for vehicle assembly and repair, stamped parts for automotive components.

Electronics: Fasteners and stamped parts for electronic devices and appliances.

Aerospace: Precision components for aircraft and spacecraft.

Machinery: Fasteners and sheet metal parts for industrial machinery and equipment.

Construction: Stamped parts for construction equipment and infrastructure projects.

If you have specific requirements or inquiries regarding our customized CNC service for aluminum and stainless steel fasteners, sheet metal processing technology, or stamping parts, please don't hesitate to contact us. Our team of experts is dedicated to providing you with high-quality solutions tailored to your needs.



Shenzhen Dongfeng Shengshi Hardware products Co., LTD



18682375931



905004489@qq.com



metalstamp-parts.com

Building 3, No.8 Zhenxing Road, Loucun Community, Xinhua Street, Guangming District, Shenzhen