



## Customized Sheet Metal Stamping Parts Stainless Steel Metal Stamping And Bending

### Our Product Introduction

#### Basic Information

- Place of Origin: China
- Minimum Order Quantity: 1000
- Price: \$ +1~10+Pcs
- Delivery Time: 15-20
- Payment Terms: L/C, D/A, D/P, T/T, Western Union, MoneyGram
- Supply Ability: 3000+pcs+Month



#### Product Specification

- Features: Rust-resistant
- Material: SUS304 2B
- Specifications: L=90MM,W=35MM,H=20MM,T=3.0MM
- Pipe: Rigid Pipe
- Country Of Origin: China
- Installation Method: Screw
- Usage: Holding Pipes
- Highlight: Customized Sheet Metal Stamping Parts, Stainless Steel Metal Stamping And Bending

for more products please visit us on [metalstamp-parts.com](http://metalstamp-parts.com)

Product Description

Our Product Introduction

for more products please visit us on [metalstamp-parts.com](http://metalstamp-parts.com)

Shenzhen Dongfeng Shengshi Hardware products Co., LTD



Choose us

Combining affordability and quality

  
Original price sales

  
Multiple specifications

  
Sufficient raw materials

  
Fast processing

  
Exquisite craftsmanship

  
Invoicable



Material	<u>SUS304 2B</u>	Delivery time	<u>20days</u>
Price	<u>\$1~10/pcs</u>	surface treatment	<u>Electrogalvanizing</u>
specifications	<u>L=90MM,W=35MM, H=0.8MM</u>	Packing	12 in a box

# About Us

Direct wholesale, self-produced and self sold



Shenzhen Dongfeng Shengshi Hardware products Co., LTD



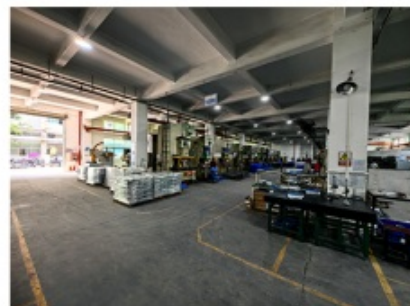
Company Profile



Shenzhen Dongfeng Shengshi Hardware Products Co., Ltd. was established in 2003 and is an ISO9001 certified factory. The company has been committed to the research and development, production and sales of hardware molds, ATM components, precision hinges, stamping parts, mechanical components, heat sinks, display hooks, and anti-theft series products. The company's main markets include North America, South America, Europe, Japan, Australia, and mainland China.

The company has complete equipment, mainly including: 48 large and small punches, 40 hand beer machines, 20 tapping machines, 25 drilling machines, 15 machining equipment, 6 lathes, 8 milling machines, 4 wire cutting machines, 5 precision grinders, CNC machining centers, spark machines, three production lines, and the quality management department's projectors, anemometer/cubic, hardness meters, altimeters, film thickness testers and other testing equipment.

The company adheres to the corporate tenet of "customer centeredness, quality as the foundation, continuous improvement and innovation, and continuous provision of high-quality products", constantly explores and strives to establish a good external image for the prosperous era of Dongfeng. We warmly welcome people from all walks of life to establish cooperative relationships with our company, work hand in hand, and create brilliance together!





After sales instructions



### 1. Are you a factory?

A: Yes, we are a factory with 21 years of experience, dedicated to the research and development, production, and sales of hardware molds, ATM components, precision hinges, stamping parts, mechanical components, heat sinks, display hooks, and anti-theft series products. Our main markets include North America, South America, Europe, Japan, Australia, and mainland China

### 2. What about the lead time?

A: 15-30 working days for mass production.

### 3. Do you have any MOQ limit for

A: Low MOQ, 1pc for sample checking is available.

### 4. How do you ship the goods and how long does it take to arrive?

A: Ship by DHL, UPS, FedEx or TNT. It takes 3-5 days to arrive. Airline and sea shipping also optional.

## 5. How to proceed an order for?

- 1) Firstly let us know your requirements or application.
- 2) Secondly We quote according to your requirements or our suggestions.
- 3) Thirdly customer confirms the samples and places deposit for formal order.
- 4) Fourthly We arrange the production.

## 6. what to be clearly indicated when I send you drawing?

A: You are kindly requested to let us know the raw material, finish and quantity at least.

## 7: What if we are not completely satisfied with the parts we re-

A: We will replace any parts that you are not satisfied with free of charge. If we make a mistake, we will work with you to correct it.



Factory



+ Factory supply

After sale



+ Multiple specifications

Examination



+ well stocked

Specifications



+ On time delivery

High quality



Integrity

Tailor-made



Support



Item	Description
Product Name	Customized Sheet Metal Stamping Parts Stainless Steel Metal Stamping And Bending
Working Process	Blanking, stamping, Punching, deep drawing, bending, Coining, Curling,Forming, threading,welding, tapping, riveting, cnc machining, CNC Milling
Material	carbon steel, Stainless steel Aluminum, copper, brass, bronze (according to customer's requirements)
Surface Treatment	Galvanized, Zinc, nickel, chrome-plated, Powder Coating, Polishing, Spraying, Anodizing, Pickling, E-coating, etc.
Packing	Inner-Plastic Bag; Outer -Standard Carton Box + Pallet/Wood Case
Application	Automobiles, Construction, Transportation, Furniture, machinery, home appliance, electronic & electric appliance, Agricultural Equipments
Equipments	stamping/punching machine, CNC bending machine, CNC Laser cutting machine, 5-250T punching machines, Welding Manapulator
Thickness	0.5mm~12mm
File Format	Solidworks,Pro/Engineer,Auto CAD,PDF,JPG
Service	Warm and quick response service provided by the professional Export Sales Team with many years' experience in handling exports to the US, Europe, Japan and other countries and regions.
Inspection	100% QC as to each products

*Our customized sheet metal stamping parts for stainless steel provide precision-engineered solutions for various applications, including fasteners, brackets, and connectors. With a focus on quality and affordability, we offer competitive pricing for our metal stamping and bending fasteners, ensuring that you receive high-quality components at budget-friendly prices.*

#### Key Features:

**Customization:** We offer customized sheet metal stamping parts tailored to your specific requirements. Whether you need fasteners, brackets, or other components, we can produce them to your exact specifications, ensuring a perfect fit for your application.

**Stainless Steel Material:** Our sheet metal stamping parts are manufactured from high-quality stainless steel, offering exceptional corrosion resistance, durability, and strength. This makes them ideal for use in a wide range of environments and applications.

**Metal Stamping and Bending:** Our state-of-the-art equipment and skilled technicians enable us to perform precise metal stamping and bending operations with accuracy and efficiency. This allows us to create complex shapes and forms while maintaining tight tolerances.

**Affordable Prices:** We understand the importance of cost-effectiveness in manufacturing. That's why we offer our customized sheet metal stamping parts at affordable prices, allowing you to get the components you need without breaking the bank.

#### Applications:

**Automotive industry:** Fasteners, brackets, and connectors for vehicle assembly and repairs.

**Construction:** Metal brackets, clips, and fasteners for construction projects and infrastructure.

**Electronics:** Sheet metal enclosures, brackets, and components for electronic devices and appliances.

**Industrial machinery:** Precision components and fasteners for machinery and equipment assembly.

**Aerospace:** Stamped parts and fasteners for aerospace applications.

*If you're looking for customized sheet metal stamping parts for stainless steel metal stamping and bending fasteners at affordable prices, please contact us for a quote. We're committed to providing high-quality components that meet your needs and fit your budget.*



**Shenzhen Dongfeng Shengshi Hardware products Co., LTD**



18682375931



905004489@qq.com



metalstamp-parts.com

Building 3, No.8 Zhenxing Road, Loucun Community, Xinhua Street, Guangming District, Shenzhen