



Cooling Heat Sink Aluminum Extrusion Heat Sink Profiles

Our Product Introduction

for more products please visit us on metalstamp-parts.com

Basic Information

- Place of Origin: China
- Minimum Order Quantity: 1000
- Price: \$ +1~10+Pcs
- Delivery Time: 15-20
- Payment Terms: L/C, D/A, D/P, T/T, Western Union, MoneyGram
- Supply Ability: 3000+pcs+Month



Product Specification

- Material: Aluminum Profiles
- Specifications: L=156MM,W=40MM,H=37.5MM
- Name: Aluminum Circular/Cylindrical/Round Heat Sink,customized Car Model Die Cast Factory,aluminium Profile
- Top2: Heat Sink Adapter 51
- Top1: Computer Stacked Fin Heat Sink
- Key Feature: Machine Work,Cold Forging
- Service: OEM/ODM,Custom Aluminum Heat Sink
- Highlight: **oem cooling heat sink,
cooling heat sink graphite,
graphite aluminum extrusion heat sink profiles**

Product Description

Our Product Introduction

for more products please visit us on metalstamp-parts.com

Shenzhen Dongfeng Shengshi Hardware products Co., LTD

Choose us

Combining affordability
and quality



Original price
sales



Multiple
specifications



Sufficient
raw materials



Fast
processing



Exquisite
craftsmanship



Invoiceable



Material

Aluminum profiles

Delivery time

20days

Price

\$1~10/pcs

Packing

12 in a box

specifications

L=156MM,
W=40MM,H=37.5MM

Service

Custom alumi
num heat sink

About Us

Direct wholesale, self-produced and self sold



Shenzhen Dongfeng Shengshi Hardware products Co., LTD



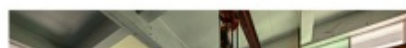
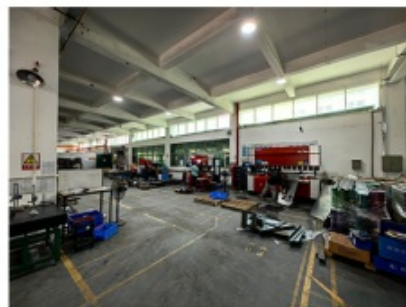
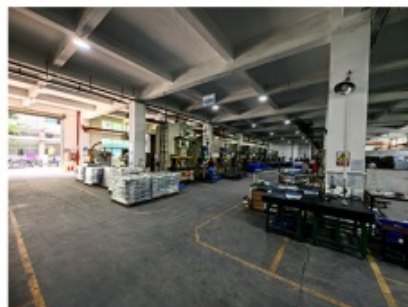
Company Profile



Shenzhen Dongfeng Shengshi Hardware Products Co., Ltd. was established in 2003 and is an ISO9001 certified factory. The company has been committed to the research and development, production and sales of hardware molds, ATM components, precision hinges, tapping parts, mechanical components, heat sinks, display hooks, and anti-theft series products. The company's main markets include North America, South America, Europe, Japan, Australia, and mainland China.

The company has complete equipment, mainly including: 48 large and small punches, 40 hand beer machines, 20 tapping machines, 25 drilling machines, 15 machining equipment, 6 lathes, 8 milling machines, 4 wire cutting machines, 5 precision grinders, CNC machining centers, spark machines, three production lines, and the quality management department's projectors, anemometer/cubic, hardness meters, altimeters, film thickness testers and other testing equipment.

The company adheres to the corporate tenet of "customer centeredness, quality as the foundation, continuous improvement and innovation, and continuous provision of high-quality products", constantly explores and strives to establish a good external image for the prosperous era of Dongfeng. We warmly welcome people from all walks of life to establish cooperative relationships with our company, work hand in hand, and create brilliance together!





After sales instructions



1. Are you a factory?

A: Yes, we are a factory with 21 years of experience, dedicated to the research and development, production, and sales of hardware molds, ATM components, precision hinges, stamping parts, mechanical components, heat sinks, display hooks, and anti-theft series products. Our main markets include North America, South America, Europe, Japan, Australia, and mainland China

2. What about the lead time?

A: 15-30 working days for mass production.

3. Do you have any MOQ limit for

A: Low MOQ, 1pc for sample checking is available.

4. How do you ship the goods and how long does it take to arrive?

A: Ship by DHL, UPS, FedEx or TNT. It takes 3-5 days to arrive. Airline and sea shipping also optional.

5. How to proceed an order for?

- 1) Firstly let us know your requirements or application.
- 2) Secondly We quote according to your requirements or our suggestions.
- 3) Thirdly customer confirms the samples and places deposit for formal order.
- 4) Fourthly We arrange the production.

6. what to be clearly indicated when I send you drawing?

A: You are kindly requested to let us know the raw material, finish and quantity at least.

7: What if we are not completely satisfied with the parts we re-

A: We will replace any parts that you are not satisfied with free of charge. If we make a mistake, we will work with you to correct it.



Factory



+ Factory supply

After sale



+ Multiple specifications

Examination



+ well stocked

Specifications



+ On time delivery

High quality



+ Integrity

Tailor-made



+ Support

Item	Description
Product Name	Cooling Heat Sink Aluminum Extrusion Heat Sink Profiles
Working Process	Blanking, stamping, Punching, deep drawing, bending, Coining, Curling,Forming, threading,welding, tapping, riveting, cnc machining, CNC Milling
Material	carbon steel, Stainless steel Aluminum, copper, brass, bronze (according to customer's requirements)
Surface Treatment	Galvanized, Zinc, nickel, chrome-plated, Powder Coating, Polishing, Spraying, Anodizing, Pickling, E-coating, etc.
Packing	Inner-Plastic Bag; Outer -Standard Carton Box + Pallet/Wood Case
Application	Automobiles, Construction, Transportation, Furniture, machinery, home appliance, electronic & electric appliance, Agricultural Equipments
Equipments	stamping/punching machine, CNC bending machine, CNC Laser cutting machine, 5-250T punching machines, Welding Manupulator
Thickness	0.5mm~12mm
File Format	Solidworks,Pro/Engineer,Auto CAD,PDF,JPG
Service	Warm and quick response service provided by the professional Export Sales Team with many years' experience in handling exports to the US, Europe, Japan and other countries and regions.
Inspection	100% QC as to each products

Material Characteristics

Material: Made from high-purity aluminum with excellent thermal conductivity, lightweight, and corrosion resistance.

Surface Treatment: Anodizing, electrophoresis coating, powder coating, etc., to enhance corrosion resistance and appearance.

Process Features

Extrusion Process: The aluminum extrusion process can produce complex cross-sectional shapes, offering design flexibility to meet various cooling needs.

Customization Services: Sizes, shapes, and designs can be customized according to customer requirements, providing a one-stop service from design to manufacturing.

Application Fields

Electronics: Used in cooling management for computers, servers, communication equipment, audio equipment, and other electronic products.

Automotive Industry: Applied in electric vehicles, automotive lighting, engine control units, and other components.

LED Lighting: Suitable for heat dissipation designs of various LED lights, such as street lights, ceiling lights, floodlights, etc.

Communication Industry: Used in cooling for base stations, data centers, and other communication equipment.

Renewable Energy: Applied in thermal management for solar inverters, wind power equipment, etc.

Product Advantages

Efficient Heat Dissipation: Aluminum has excellent thermal conductivity, allowing quick transfer and dissipation of heat.

Lightweight: Aluminum is lightweight, suitable for applications with strict weight requirements.

Cost-Effective: The extrusion process is relatively low-cost and allows for mass production, reducing unit costs.

Corrosion Resistance: Aluminum naturally forms an oxide layer, enhancing its corrosion resistance and extending its lifespan.

Design Flexibility: The extrusion process can produce various complex cross-sections to meet specific thermal and mechanical requirements.

Common Profile Types

Flat Plate Heat Sinks: Simple structure, suitable for general cooling needs.

Finned Heat Sinks: Increased surface area for better heat dissipation, commonly used in high-power devices.

Pin Heat Sinks: Pin or column structures with a large surface area, suitable for natural convection cooling.

Custom Profiles: Designed according to customer requirements to meet specific thermal management and mechanical installation needs.

Selection Criteria

Thermal Performance: The heat sink must effectively dissipate the required amount of heat to ensure the normal operation of the device.

Physical Dimensions: The size and shape of the heat sink must fit the design constraints of the equipment.

Weight: Lightweight designs are required for applications with strict weight requirements.

Mounting Options: The heat sink must be compatible with the device's mounting requirements to ensure stable fixation.

Cost Control: Choose a cost-effective cooling solution without compromising performance.

Product Specifications Table

Item	Description
------	-------------

Item	Description
Material	High-purity aluminum
Surface Treatment	Anodizing, electrophoresis coating, powder coating
Process	Aluminum extrusion process
Customization Services	Sizes, shapes, and designs can be customized; one-stop service from design to manufacturing
Application Fields	Electronics, automotive industry, LED lighting, communication industry, renewable energy
Product Advantages	Efficient heat dissipation, lightweight, cost-effective, corrosion resistance, design flexibility
Profile Types	Flat plate heat sinks, finned heat sinks, pin heat sinks, custom profiles
Selection Criteria	Thermal performance, physical dimensions, weight, mounting options, cost control

If you have specific requirements or further questions, please feel free to contact us. We can provide additional information and suggestions.



Shenzhen Dongfeng Shengshi Hardware products Co., LTD



18682375931



905004489@qq.com



metalstamp-parts.com

Building 3, No.8 Zhenxing Road, Loucun Community, Xinhua Street, Guangming District, Shenzhen