



Customized Aluminum Profile Extrusion Aluminum Profile Heat Sink

Our Product Introduction

Basic Information

- Place of Origin: China
- Minimum Order Quantity: 1000
- Price: \$ +1~10+Pcs
- Delivery Time: 15-20
- Payment Terms: L/C, D/A, D/P, T/T, Western Union, MoneyGram
- Supply Ability: 3000+pcs+Month



Product Specification

- Material: Aluminum Profiles
- Specifications: L=92MM,W=27MM,H=20MM
- Name: Customized Car Model Die Cast Factory
- Usage: Aluminum Extruded Profiles Extrusion Aluminum
- Top3: Extrude Heat Sink,Tec Heat Sink Cnc Parts Supply
- Top2: Heat Sink Adapter 51,Graphite Heat Sink
- Top1: Round Black Anodizing Automotive Vape Heat Sink,Computer Stacked Fin Heat Sink
- Keywords: Aluminum Heat Sink
- Lead Time: 2-3weeks,Determined By Your Quantity And Detailed Requirements
- Service: OEM/ODM,Custom Aluminum Heat Sink
- Highlight: **customized aluminum profile extrusion, aluminum profile extrusion housing, housing aluminum profile heat sink**

Product Description

Our Product Introduction

for more products please visit us on metalstamp-parts.com

Shenzhen Dongfeng Shengshi Hardware products Co., LTD

Choose us

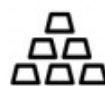
Combining affordability
and quality



Original price
sales



Multiple
specifications



Sufficient
raw materials



Fast
processing



Exquisite
craftsmanship



Invoicable



Material

Aluminum profiles

Delivery time

20days

Price

\$3~5/pcs

Packing

12 in a box

specifications

L=92MM,
W=27MM,H=20MM

Service

Custom alumi
num heat sink

About Us

Direct wholesale, self-produced and self sold



Shenzhen Dongfeng Shengshi Hardware products Co., LTD



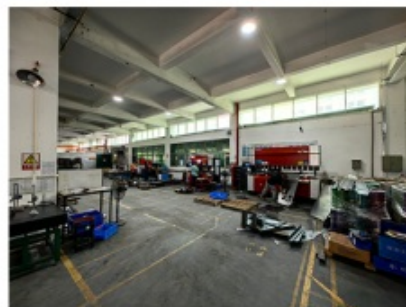
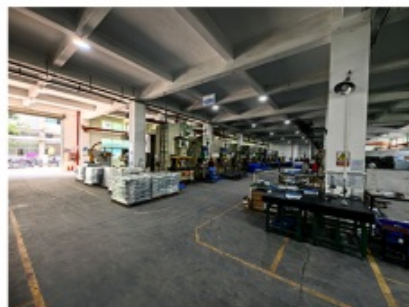
Company Profile



Shenzhen Dongfeng Shengshi Hardware Products Co., Ltd. was established in 2003 and is an ISO9001 certified factory. The company has been committed to the research and development, production and sales of hardware molds, ATM components, precision hinges, tampering parts, mechanical components, heat sinks, display hooks, and anti-theft series products. The company's main markets include North America, South America, Europe, Japan, Australia, and mainland China.

The company has complete equipment, mainly including: 48 large and small punches, 40 hand beer machines, 20 tapping machines, 25 drilling machines, 15 machining equipment, 6 lathes, 8 milling machines, 4 wire cutting machines, 5 precision grinders, CNC machining centers, spark machines, three production lines, and the quality management department's projectors, anemometer/cubic, hardness meters, altimeters, film thickness testers and other testing equipment.

The company adheres to the corporate tenet of "customer centeredness, quality as the foundation, continuous improvement and innovation, and continuous provision of high-quality products", constantly explores and strives to establish a good external image for the prosperous era of Dongfeng. We warmly welcome people from all walks of life to establish cooperative relationships with our company, work hand in hand, and create brilliance together!





After sales instructions



1. Are you a factory?

A: Yes, we are a factory with 21 years of experience, dedicated to the research and development, production, and sales of hardware molds, ATM components, precision hinges, stamping parts, mechanical components, heat sinks, display hooks, and anti-theft series products. Our main markets include North America, South America, Europe, Japan, Australia, and mainland China

2. What about the lead time?

A: 15-30 working days for mass production.

3. Do you have any MOQ limit for

A: Low MOQ, 1pc for sample checking is available.

4. How do you ship the goods and how long does it take to arrive?

A: Ship by DHL, UPS, FedEx or TNT. It takes 3-5 days to arrive. Airline and sea shipping also optional.

5. How to proceed an order for?

- 1) Firstly let us know your requirements or application.
- 2) Secondly We quote according to your requirements or our suggestions.
- 3) Thirdly customer confirms the samples and places deposit for formal order.
- 4) Fourthly We arrange the production.

6. what to be clearly indicated when I send you drawing?

A: You are kindly requested to let us know the raw material, finish and quantity at least.

7: What if we are not completely satisfied with the parts we re-

A: We will replace any parts that you are not satisfied with free of charge. If we make a mistake, we will work with you to correct it.



Factory



+ Factory supply

After sale



+ Multiple specifications

Examination



+ well stocked

Specifications



+ On time delivery

High quality



+ Integrity

Tailor-made



+ Support

Item	Description
Product Name	Customized Aluminum Profile Extrusion Aluminum Profile Heat Sink
Working Process	Blanking, stamping, Punching, deep drawing, bending, Coining, Curling,Forming, threading,welding, tapping, riveting, cnc machining, CNC Milling
Material	carbon steel, Stainless steel Aluminum, copper, brass, bronze (according to customer's requirements)
Surface Treatment	Galvanized, Zinc, nickel, chrome-plated, Powder Coating, Polishing, Spraying, Anodizing, Pickling, E-coating, etc.
Packing	Inner-Plastic Bag; Outer -Standard Carton Box + Pallet/Wood Case
Application	Automobiles, Construction, Transportation, Furniture, machinery, home appliance, electronic & electric appliance, Agricultural Equipments
Equipments	stamping/punching machine, CNC bending machine, CNC Laser cutting machine, 5-250T punching machines, Welding Manapulator
Thickness	0.5mm~12mm
File Format	Solidworks,Pro/Engineer,Auto CAD,PDF,JPG
Service	Warm and quick response service provided by the professional Export Sales Team with many years' experience in handling exports to the US, Europe, Japan and other countries and regions.
Inspection	100% QC as to each products

Our Aluminum Extrusion Profiles represent the pinnacle of precision engineering and craftsmanship. Designed to meet the demanding requirements of modern industries, these profiles offer a host of features tailored to enhance performance and functionality.

Enhanced Design:

Optimized Geometry: Engineered with advanced CAD/CAM software, our profiles feature optimized geometries for maximum strength and efficiency.

Modular Compatibility: Designed with modular compatibility in mind, our profiles seamlessly integrate with existing systems, offering versatility and ease of use.

Tolerance Control: With tight tolerance control during the extrusion process, our profiles ensure consistent dimensions and superior fitment.

Advanced Thermal Management:

Efficient Heat Dissipation: Utilizing innovative heat sink designs and high thermal conductivity aluminum alloys, our profiles excel in thermal management, keeping components cool even under heavy loads.

Thermal Simulation: Prior to production, our profiles undergo rigorous thermal simulation tests to ensure optimal performance and reliability in real-world applications.

Customization Options:

Tailored Solutions: We offer a range of customization options, including length, shape, surface finish, and additional features, to meet your specific project requirements.

Value-Added Services: Our experienced engineering team provides comprehensive support throughout the customization process, from initial design concepts to final production.

Quality Assurance:

Stringent Quality Control: Every profile undergoes thorough quality control inspections at every stage of production, ensuring adherence to the highest quality standards.

Material Traceability: We prioritize material traceability, using only certified raw materials sourced from trusted suppliers, to guarantee product integrity and performance.

Applications:

Electronics: Ideal for housing electronic components, power supplies, and LED lighting fixtures.

Industrial Machinery: Suitable for use in industrial machinery, automation systems, and robotics.

Renewable Energy: Used in solar panel frames, wind turbine components, and other renewable energy applications.

Our Aluminum Extrusion Profiles offer unparalleled performance, reliability, and versatility, making them the preferred choice for demanding applications across industries.



Shenzhen Dongfeng Shengshi Hardware products Co., LTD



18682375931



905004489@qq.com



metalstamp-parts.com

Building 3, No.8 Zhenxing Road, Loucun Community, Xinhui Street, Guangming District, Shenzhen