



## OEM ODM Aluminum Extrusion Heat Sink Black Anode Graphite Heat Sink

### Our Product Introduction

#### Basic Information

- Place of Origin: China
- Minimum Order Quantity: 1000
- Price: \$ +1~10+Pcs
- Delivery Time: 15-20
- Payment Terms: L/C, D/A, D/P, T/T, Western Union, MoneyGram
- Supply Ability: 3000+pcs+Month



#### Product Specification

- Material: Aluminum Profiles
- Specifications: D=50MM,H=147MM
- Surface Treatment: Black Anode
- Product Name: Aluminum Extrusion Profile
- Top2: Graphite Heat Sink
- Keywords: Aluminum Heat Sink
- Lead Time: 2-3weeks,Determined By Your Quantity And Detailed Requirements
- Service: OEM/ODM,Custom Aluminum Heat Sink
- Highlight: **odm aluminum extrusion heat sink,  
black anode graphite heat sink,  
aluminum extrusion heat sink black anode**

Shenzhen Dongfeng Shengshi Hardware products Co., LTD



Choose us

Combining affordability and quality

  
Original price sales

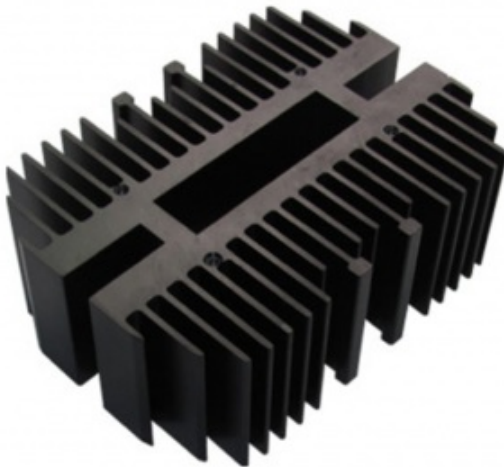
  
Multiple specifications

  
Sufficient raw materials

  
Fast processing

  
Exquisite craftsmanship

  
Invoicable



Material	<u>Aluminum profiles</u>	Delivery time	<u>20days</u>
Price	<u>\$3~5/pcs</u>	surface treatment	<u>Black anode</u>
specifications	<u>D=147MM, H=50MM</u>	Product name	<u>Aluminum Extrusion Profile</u>

# About Us

Direct wholesale, self-produced and self sold



Shenzhen Dongfeng Shengshi Hardware products Co., LTD



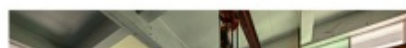
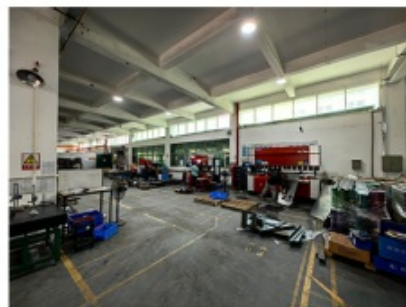
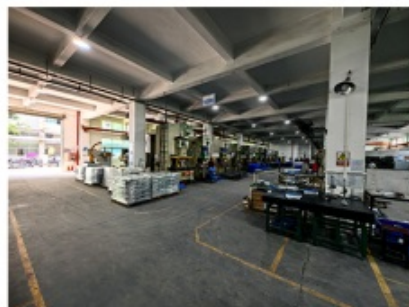
Company Profile



Shenzhen Dongfeng Shengshi Hardware Products Co., Ltd. was established in 2003 and is an ISO9001 certified factory. The company has been committed to the research and development, production and sales of hardware molds, ATM components, precision hinges, tampering parts, mechanical components, heat sinks, display hooks, and anti-theft series products. The company's main markets include North America, South America, Europe, Japan, Australia, and mainland China.

The company has complete equipment, mainly including: 48 large and small punches, 40 hand beer machines, 20 tapping machines, 25 drilling machines, 15 machining equipment, 6 lathes, 8 milling machines, 4 wire cutting machines, 5 precision grinders, CNC machining centers, spark machines, three production lines, and the quality management department's projectors, anemometer/cubic, hardness meters, altimeters, film thickness testers and other testing equipment.

The company adheres to the corporate tenet of "customer centeredness, quality as the foundation, continuous improvement and innovation, and continuous provision of high-quality products", constantly explores and strives to establish a good external image for the prosperous era of Dongfeng. We warmly welcome people from all walks of life to establish cooperative relationships with our company, work hand in hand, and create brilliance together!





After sales instructions



### 1. Are you a factory?

A: Yes, we are a factory with 21 years of experience, dedicated to the research and development, production, and sales of hardware molds, ATM components, precision hinges, stamping parts, mechanical components, heat sinks, display hooks, and anti-theft series products. Our main markets include North America, South America, Europe, Japan, Australia, and mainland China

### 2. What about the lead time?

A: 15-30 working days for mass production.

### 3. Do you have any MOQ limit for

A: Low MOQ, 1pc for sample checking is available.

### 4. How do you ship the goods and how long does it take to arrive?

A: Ship by DHL, UPS, FedEx or TNT. It takes 3-5 days to arrive. Airline and sea shipping also optional.

## 5. How to proceed an order for?

- 1) Firstly let us know your requirements or application.
- 2) Secondly We quote according to your requirements or our suggestions.
- 3) Thirdly customer confirms the samples and places deposit for formal order.
- 4) Fourthly We arrange the production.

## 6. what to be clearly indicated when I send you drawing?

A: You are kindly requested to let us know the raw material, finish and quantity at least.

## 7: What if we are not completely satisfied with the parts we re-

A: We will replace any parts that you are not satisfied with free of charge. If we make a mistake, we will work with you to correct it.



Factory



+ Factory supply

After sale



+ Multiple specifications

Examination



+ well stocked

Specifications



+ On time delivery

High quality



+ Integrity

Tailor-made



+ Support



management

customization

Shenzhen Dongfeng Shengshi Hardware products Co., LTD

Item	Description
Product Name	OEM ODM Aluminum Extrusion Heat Sink Black Anode Graphite Heat Sink
Working Process	Blanking, stamping, Punching, deep drawing, bending, Coining, Curling,Forming, threading,welding, tapping, riveting, cnc machining, CNC Milling
Material	carbon steel, Stainless steel Aluminum, copper, brass, bronze (according to customer's requirements)
Surface Treatment	Galvanized, Zinc, nickel, chrome-plated, Powder Coating, Polishing, Spraying, Anodizing, Pickling, E-coating, etc.
Packing	Inner-Plastic Bag; Outer -Standard Carton Box + Pallet/Wood Case
Application	Automobiles, Construction, Transportation, Furniture, machinery, home appliance, electronic & electric appliance, Agricultural Equipments
Equipments	stamping/punching machine, CNC bending machine, CNC Laser cutting machine, 5-250T punching machines, Welding Manapulator
Thickness	0.5mm~12mm
File Format	Solidworks,Pro/Engineer,Auto CAD,PDF,JPG
Service	Warm and quick response service provided by the professional Export Sales Team with many years' experience in handling exports to the US, Europe, Japan and other countries and regions.
Inspection	100% QC as to each products

*Introducing our Aluminum Extruded Heat Sink, a versatile and efficient solution for thermal management in various applications. Crafted through precision extrusion processes, these heat sinks are designed to effectively dissipate heat and maintain optimal operating temperatures for electronic components.*

### Key Features:

**Extruded Aluminum Construction:** Constructed from high-quality aluminum alloys, our heat sinks offer excellent thermal conductivity and durability.

**Efficient Heat Dissipation:** Designed with intricate fin patterns and optimized geometries, our extruded heat sinks maximize surface area for enhanced heat dissipation.

**Versatile Extrusion Profiles:** We offer a wide range of extrusion profiles, including straight-fin, cross-cut, and folded-fin designs, to suit different thermal management requirements.

**Customization Options:** With our in-house design and manufacturing capabilities, we can tailor the dimensions, shapes, and configurations of our extruded heat sinks to meet your specific needs.

**Corrosion Resistance:** Our extruded heat sinks are treated with protective coatings or anodization to enhance corrosion resistance and prolong service life.

### Advantages:

**Superior Thermal Performance:** Our extruded heat sinks efficiently dissipate heat, preventing overheating and ensuring the reliable operation of electronic devices.

**Cost-Effective Solutions:** With our efficient extrusion processes and competitive pricing, we offer cost-effective solutions for thermal management needs.

**Quick Turnaround:** Leveraging our streamlined production processes, we can quickly fulfill orders and deliver extruded heat sinks to meet project deadlines.

**Reliable Quality:** We adhere to stringent quality control standards throughout the manufacturing process to ensure that each heat sink meets our high-quality standards.

### Applications:

**Electronics:** Ideal for cooling electronic components such as CPUs, GPUs, power transistors, and voltage regulators.

**LED Lighting:** Used in LED heat sink assemblies to maintain optimal operating temperatures and prolong LED lifespan.

**Automotive:** Suitable for automotive applications including motor controllers, battery management systems, and LED headlights.

**Industrial Equipment:** Applied in industrial machinery, power supplies, and inverters to dissipate heat generated during operation.

### Get in Touch:

*Ready to experience the superior thermal management capabilities of our Aluminum Extruded Heat Sinks? Contact us today to learn more about our extrusion profiles and discuss your thermal management requirements.*



**Shenzhen Dongfeng Shengshi Hardware products Co., LTD**



18682375931



905004489@qq.com



metalstamp-parts.com

Building 3, No.8 Zhenxing Road, Loucun Community, Xinhua Street, Guangming District, Shenzhen