

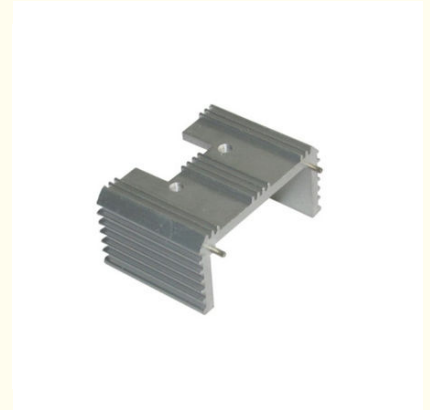


Electronic Heat Sink Routing Board Aluminum Radiator Fine Tooth

Our Product Introduction

Basic Information

- Place of Origin: China
- Minimum Order Quantity: 1000
- Price: \$ +1~10+Pcs
- Delivery Time: 15-20
- Payment Terms: L/C, D/A, D/P, T/T, Western Union, MoneyGram
- Supply Ability: 3000+pcs+Month



Product Specification

- Material: Aluminum Profiles
- Specifications: L=46MM,W=31MM,H=22MM
- Product Name: Aluminum Circular/Cylindrical/Round Heat Sink
- Top2: Heat Sink Adapter 51, Graphite Heat Sink
- Top1: Computer Stacked Fin Heat Sink
- Lead Time: 2-3weeks, Determined By Your Quantity And Detailed Requirements
- Service: OEM/ODM, Custom Aluminum Heat Sink
- Highlight: **Electronic Heat Sink Routing Board, Aluminum Radiator Fine Tooth**

Product Description

Item	Description
Product Name	Electronic Heat Sink Routing Board Aluminum Radiator Fine Tooth
Working Process	Blanking, stamping, Punching, deep drawing, bending, Coining, Curling, Forming, threading, welding, tapping, riveting, cnc machining, CNC Milling
Material	carbon steel, Stainless steel Aluminum, copper, brass, bronze (according to customer's requirements)
Surface Treatment	Galvanized, Zinc, nickel, chrome-plated, Powder Coating, Polishing, Spraying, Anodizing, Pickling, E-coating, etc.
Packing	Inner-Plastic Bag; Outer -Standard Carton Box + Pallet/Wood Case
Application	Automobiles, Construction, Transportation, Furniture, machinery, home appliance, electronic & electric appliance, Agricultural Equipments
Equipments	stamping/punching machine, CNC bending machine, CNC Laser cutting machine, 5-250T punching machines, Welding Manapulator
Thickness	0.5mm~12mm
File Format	Solidworks, Pro/Engineer, Auto CAD, PDF, JPG
Service	Warm and quick response service provided by the professional Export Sales Team with many years' experience in handling exports to the US, Europe, Japan and other countries and regions.
Inspection	100% QC as to each products

Introducing our Electronic Heat Sink Routing Board Aluminum Profile Radiator, the ultimate solution for efficient heat conduction in power amplifiers and electronic devices. Crafted with precision and expertise, our aluminum profile radiators feature a fine-tooth design to maximize surface area and optimize thermal performance.

Key Features:

Fine-Tooth Design: Our heat sink routing board aluminum profiles are engineered with intricate fine-tooth patterns, increasing surface area for superior heat dissipation.

High-Quality Aluminum: Constructed from premium-grade aluminum alloy, our radiators offer exceptional thermal conductivity and durability, ensuring reliable heat conduction.

Optimized Thermal Performance: With precision engineering and advanced manufacturing techniques, our aluminum profiles provide efficient heat conduction to maintain optimal operating temperatures for power amplifiers and electronic components.

Customization Options: We offer a variety of customization options, including profile dimensions, tooth configurations, and surface finishes, to meet your specific heat conduction requirements.

Versatile Applications: Our aluminum profile radiators are suitable for a wide range of applications, including power amplifiers, audio equipment, LED lighting fixtures, and industrial machinery.

Advantages:

Enhanced Heat Dissipation: The fine-tooth design of our aluminum profiles maximizes surface area, allowing for efficient heat dissipation and preventing overheating of electronic components.

Durable Construction: Crafted from high-quality aluminum alloy, our radiators are resistant to corrosion and wear, ensuring long-lasting durability and reliability.

Custom Solutions: We work closely with our clients to understand their heat conduction needs and provide customized solutions tailored to their specific requirements.

Quick Turnaround: With our streamlined production processes and efficient logistics, we offer quick turnaround times for both standard and custom orders.

Applications:

Power Amplifiers: Ideal for dissipating heat generated by power amplifiers and audio equipment to maintain optimal performance.

LED Lighting: Used in LED heat sink assemblies to effectively dissipate heat and prolong the lifespan of LED components.

Industrial Machinery: Applied in industrial machinery and equipment to prevent overheating and ensure continuous operation.

Get in Touch:

Experience the superior thermal performance and reliability of our Electronic Heat Sink Routing Board Aluminum Profile Radiator. Contact us today to learn more about our customization options and discuss your heat conduction needs.



Shenzhen Dongfeng Shengshi Hardware products Co., LTD



18682375931



905004489@qq.com



metalstamp-parts.com

Building 3, No.8 Zhenxing Road, Loucun Community, Xinhua Street, Guangming District, Shenzhen