



## Aluminum Heatsink Extrusion Profiles Graphite Extruded Heat Sink Profiles

### Our Product Introduction

for more products please visit us on [metalstamp-parts.com](http://metalstamp-parts.com)

#### Basic Information

- Place of Origin: China
- Minimum Order Quantity: 1000
- Price: \$ +1~10+Pcs
- Delivery Time: 15-20
- Payment Terms: L/C, D/A, D/P, T/T, Western Union, MoneyGram
- Supply Ability: 3000+pcs+Month



#### Product Specification

- Material: Aluminum Profiles
- Specifications: L=90MM,W=72MM,H=45MM
- Top2: Heat Sink Adapter 51, Graphite Heat Sink
- Top1: Round Black Anodizing Automotive Vape Heat Sink, Computer Stacked Fin Heat Sink
- Keywords: Aluminum Heat Sink
- Lead Time: 2-3weeks, Determined By Your Quantity And Detailed Requirements
- Service: OEM/ODM, Custom Aluminum Heat Sink
- Highlight: **odm aluminum heatsink extrusion profiles, graphite extruded heat sink profiles, aluminum heatsink extrusion profiles graphite**

## Product Description

### Our Product Introduction

for more products please visit us on [metalstamp-parts.com](http://metalstamp-parts.com)

Shenzhen Dongfeng Shengshi Hardware products Co., LTD

Choose us

Combining affordability  
and quality



Original price  
sales



Multiple  
specifications



Sufficient  
raw materials



Fast  
processing



Exquisite  
craftsmanship



Invoiceable



Material

Aluminum profiles

Delivery time

20days

Price

\$1~10/pcs

Packing

12 in a box

specifications

L=90MM,  
W=72MM,H=45MM

Service

Custom alumi  
num heat sink

# About Us

Direct wholesale, self-produced and self sold



Shenzhen Dongfeng Shengshi Hardware products Co., LTD



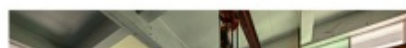
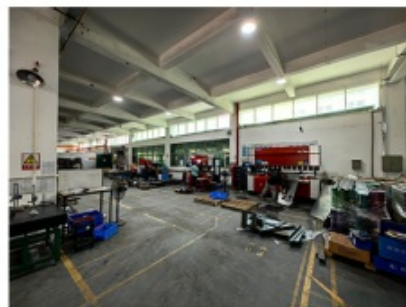
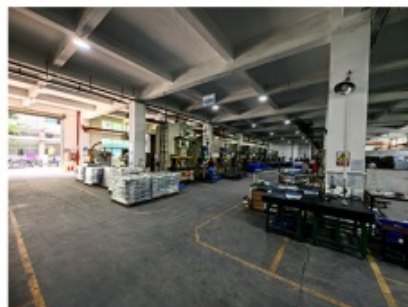
Company Profile



Shenzhen Dongfeng Shengshi Hardware Products Co., Ltd. was established in 2003 and is an ISO9001 certified factory. The company has been committed to the research and development, production and sales of hardware molds, ATM components, precision hinges, tampering parts, mechanical components, heat sinks, display hooks, and anti-theft series products. The company's main markets include North America, South America, Europe, Japan, Australia, and mainland China.

The company has complete equipment, mainly including: 48 large and small punches, 40 hand beer machines, 20 tapping machines, 25 drilling machines, 15 machining equipment, 6 lathes, 8 milling machines, 4 wire cutting machines, 5 precision grinders, CNC machining centers, spark machines, three production lines, and the quality management department's projectors, anemometer/cubic, hardness meters, altimeters, film thickness testers and other testing equipment.

The company adheres to the corporate tenet of "customer centeredness, quality as the foundation, continuous improvement and innovation, and continuous provision of high-quality products", constantly explores and strives to establish a good external image for the prosperous era of Dongfeng. We warmly welcome people from all walks of life to establish cooperative relationships with our company, work hand in hand, and create brilliance together!





After sales instructions



### 1. Are you a factory?

A: Yes, we are a factory with 21 years of experience, dedicated to the research and development, production, and sales of hardware molds, ATM components, precision hinges, stamping parts, mechanical components, heat sinks, display hooks, and anti-theft series products. Our main markets include North America, South America, Europe, Japan, Australia, and mainland China

### 2. What about the lead time?

A: 15-30 working days for mass production.

### 3. Do you have any MOQ limit for

A: Low MOQ, 1pc for sample checking is available.

### 4. How do you ship the goods and how long does it take to arrive?

A: Ship by DHL, UPS, FedEx or TNT. It takes 3-5 days to arrive. Airline and sea shipping also optional.

## 5. How to proceed an order for?

- 1) Firstly let us know your requirements or application.
- 2) Secondly We quote according to your requirements or our suggestions.
- 3) Thirdly customer confirms the samples and places deposit for formal order.
- 4) Fourthly We arrange the production.

## 6. what to be clearly indicated when I send you drawing?

A: You are kindly requested to let us know the raw material, finish and quantity at least.

## 7: What if we are not completely satisfied with the parts we re-

A: We will replace any parts that you are not satisfied with free of charge. If we make a mistake, we will work with you to correct it.



Factory



+ Factory supply

After sale



+ Multiple specifications

Examination



+ well stocked

Specifications



+ On time delivery

High quality



+ Integrity

Tailor-made



+ Support



management

customization

Shenzhen Dongfeng Shengshi Hardware products Co., LTD

Item	Description
Product Name	Aluminum Heatsink Extrusion Profiles Graphite Extruded Heat Sink Profiles
Working Process	Blanking, stamping, Punching, deep drawing, bending, Coining, Curling,Forming, threading,welding, tapping, riveting, cnc machining, CNC Milling
Material	carbon steel, Stainless steel Aluminum, copper, brass, bronze (according to customer's requirements)
Surface Treatment	Galvanized, Zinc, nickel, chrome-plated, Powder Coating, Polishing, Spraying, Anodizing, Pickling, E-coating, etc.
Packing	Inner-Plastic Bag; Outer -Standard Carton Box + Pallet/Wood Case
Application	Automobiles, Construction, Transportation, Furniture, machinery, home appliance, electronic & electric appliance, Agricultural Equipments
Equipments	stamping/punching machine, CNC bending machine, CNC Laser cutting machine, 5-250T punching machines, Welding Manapulator
Thickness	0.5mm~12mm
File Format	Solidworks,Pro/Engineer,Auto CAD,PDF,JPG
Service	Warm and quick response service provided by the professional Export Sales Team with many years' experience in handling exports to the US, Europe, Japan and other countries and regions.
Inspection	100% QC as to each products

Unlock superior thermal management with our high-quality Aluminum Profiles for Heat Sinks, available at unbeatable factory prices. Crafted with precision and expertise, our aluminum profiles offer exceptional heat dissipation capabilities, ensuring optimal performance for your electronic devices.

### Key Features:

**Premium Aluminum Construction:** Our heat sink profiles are manufactured from high-quality aluminum alloys, guaranteeing excellent thermal conductivity and durability.

**Optimized Heat Dissipation:** Engineered with advanced fin designs and geometries, our profiles maximize surface area to efficiently dissipate heat, preventing overheating of electronic components.

**Tailored Solutions:** We offer fully customizable profiles, allowing you to specify dimensions, shapes, fin configurations, and surface finishes to suit your exact requirements.

**Factory Prices:** By sourcing directly from our manufacturing facility, we offer competitive factory prices without compromising on quality, providing cost-effective solutions for your thermal management needs.

**Versatile Applications:** Suitable for a wide range of applications including electronics, LED lighting, automotive, telecommunications, and industrial machinery, our heat sink profiles offer versatile solutions for diverse thermal management challenges.

### Advantages:

**Superior Thermal Performance:** Our heat sink profiles deliver exceptional thermal management, ensuring optimal operating temperatures and reliable performance for electronic devices.

**Customization Flexibility:** We work closely with you to understand your specific requirements and deliver customized solutions that meet your exact specifications and application needs.

**Cost-Effective Solutions:** With our competitive factory prices and efficient manufacturing processes, we offer cost-effective solutions without compromising on quality or performance.

**Reliable Quality:** Rigorous quality control measures are implemented throughout the manufacturing process to uphold the highest standards of quality and consistency.

### Applications:

**Electronics:** Ideal for cooling electronic components such as CPUs, GPUs, power transistors, and voltage regulators.

**LED Lighting:** Used in LED heat sink assemblies to maintain optimal operating temperatures and extend the lifespan of LED fixtures.

**Automotive:** Applied in automotive electronics, battery management systems, LED headlights, and motor controllers to dissipate heat generated during operation.

**Telecommunications:** Suitable for telecommunications equipment including servers, routers, and base stations to prevent overheating and ensure continuous operation.

**Industrial Machinery:** Used in industrial machinery, power supplies, inverters, and high-power applications requiring efficient thermal management.

### Get in Touch:

*Experience the quality and affordability of our Aluminum Profiles for Heat Sinks at factory prices. Contact us today to discuss your requirements and explore customized solutions tailored to your applications.*



**Shenzhen Dongfeng Shengshi Hardware products Co., LTD**



18682375931



905004489@qq.com



metalstamp-parts.com

Building 3, No.8 Zhenxing Road, Loucun Community, Xinhua Street, Guangming District, Shenzhen