

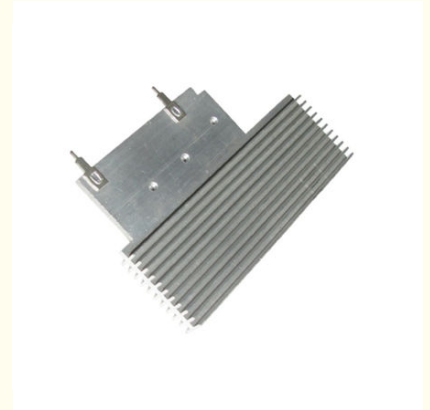


Aluminum Profile Processing Aluminum Heat Sink Customized Heat Sink

Our Product Introduction

Basic Information

- Place of Origin: China
- Minimum Order Quantity: 1000
- Price: \$ +1~10+Pcs
- Delivery Time: 15-20
- Payment Terms: L/C, D/A, D/P, T/T, Western Union, MoneyGram
- Supply Ability: 3000+pcs+Month



Product Specification

- Material: Aluminum Profiles
- Specifications: L=100MM,W=60MM,H=11MM
- Top2: Graphite Heat Sink
- Keywords: Aluminum Heat Sink
- Lead Time: 2-3weeks,Determined By Your Quantity And Detailed Requirements
- Service: OEM/ODM,Custom Aluminum Heat Sink
- Highlight: **Processing Aluminum Heat Sink, Customized CNC Heat Sink**

Product Description

Our Product Introduction

for more products please visit us on metalstamp-parts.com

Shenzhen Dongfeng Shengshi Hardware products Co., LTD

Choose us

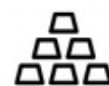
Combining affordability
and quality



Original price
sales



Multiple
specifications



Sufficient
raw materials



Fast
processing



Exquisite
craftsmanship



Invoiceable



Material

Aluminum profiles

Delivery time

20days

Price

\$1~10/pcs

Packing

12 in a box

specifications

L=100MM,
W=60MM,H=11MM

Service

Custom alumi
num heat sink

About Us

Direct wholesale, self-produced and self sold



Shenzhen Dongfeng Shengshi Hardware products Co., LTD



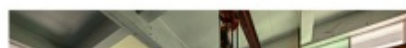
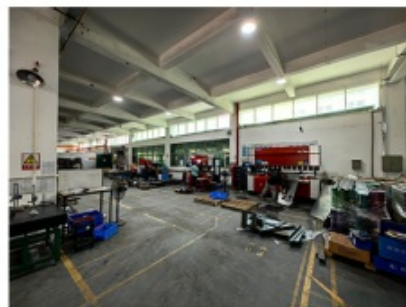
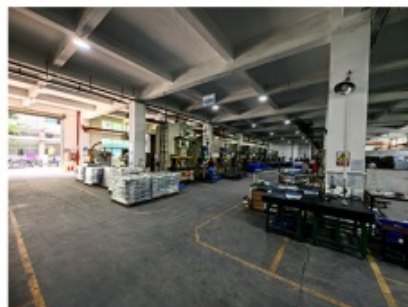
Company Profile



Shenzhen Dongfeng Shengshi Hardware Products Co., Ltd. was established in 2003 and is an ISO9001 certified factory. The company has been committed to the research and development, production and sales of hardware molds, ATM components, precision hinges, tapping parts, mechanical components, heat sinks, display hooks, and anti-theft series products. The company's main markets include North America, South America, Europe, Japan, Australia, and mainland China.

The company has complete equipment, mainly including: 48 large and small punches, 40 hand beer machines, 20 tapping machines, 25 drilling machines, 15 machining equipment, 6 lathes, 8 milling machines, 4 wire cutting machines, 5 precision grinders, CNC machining centers, spark machines, three production lines, and the quality management department's projectors, anemometer/cubic, hardness meters, altimeters, film thickness testers and other testing equipment.

The company adheres to the corporate tenet of "customer centeredness, quality as the foundation, continuous improvement and innovation, and continuous provision of high-quality products", constantly explores and strives to establish a good external image for the prosperous era of Dongfeng. We warmly welcome people from all walks of life to establish cooperative relationships with our company, work hand in hand, and create brilliance together!





After sales instructions



1. Are you a factory?

A: Yes, we are a factory with 21 years of experience, dedicated to the research and development, production, and sales of hardware molds, ATM components, precision hinges, stamping parts, mechanical components, heat sinks, display hooks, and anti-theft series products. Our main markets include North America, South America, Europe, Japan, Australia, and mainland China

2. What about the lead time?

A: 15-30 working days for mass production.

3. Do you have any MOQ limit for

A: Low MOQ, 1pc for sample checking is available.

4. How do you ship the goods and how long does it take to arrive?

A: Ship by DHL, UPS, FedEx or TNT. It takes 3-5 days to arrive. Airline and sea shipping also optional.

5. How to proceed an order for?

- 1) Firstly let us know your requirements or application.
- 2) Secondly We quote according to your requirements or our suggestions.
- 3) Thirdly customer confirms the samples and places deposit for formal order.
- 4) Fourthly We arrange the production.

6. what to be clearly indicated when I send you drawing?

A: You are kindly requested to let us know the raw material, finish and quantity at least.

7: What if we are not completely satisfied with the parts we re-

A: We will replace any parts that you are not satisfied with free of charge. If we make a mistake, we will work with you to correct it.



Factory



+ Factory supply

After sale



+ Multiple specifications

Examination



+ well stocked

Specifications



+ On time delivery

High quality



+ Integrity

Tailor-made



+ Support

Item	Description
Product Name	Aluminum Profile Processing Aluminum Heat Sink Customized Heat Sink
Working Process	Blanking, stamping, Punching, deep drawing, bending, Coining, Curling,Forming, threading,welding, tapping, riveting, cnc machining, CNC Milling
Material	carbon steel, Stainless steel Aluminum, copper, brass, bronze (according to customer's requirements)
Surface Treatment	Galvanized, Zinc, nickel, chrome-plated, Powder Coating, Polishing, Spraying, Anodizing, Pickling, E-coating, etc.
Packing	Inner-Plastic Bag; Outer -Standard Carton Box + Pallet/Wood Case
Application	Automobiles, Construction, Transportation, Furniture, machinery, home appliance, electronic & electric appliance, Agricultural Equipments
Equipments	stamping/punching machine, CNC bending machine, CNC Laser cutting machine, 5-250T punching machines, Welding Manapulator
Thickness	0.5mm~12mm
File Format	Solidworks,Pro/Engineer,Auto CAD,PDF,JPG
Service	Warm and quick response service provided by the professional Export Sales Team with many years' experience in handling exports to the US, Europe, Japan and other countries and regions.
Inspection	100% QC as to each products

Elevate your thermal management solutions with our Customized CNC Heat Sink, meticulously crafted from premium aluminum profiles. Designed for efficient heat dissipation, our heat sinks undergo precise CNC machining processes to ensure optimal performance and durability, tailored to your specific requirements.

Key Features:

Precision CNC Machining: Our heat sinks are manufactured using state-of-the-art CNC machining techniques, guaranteeing tight tolerances and intricate designs for superior thermal performance.

Customized Design: Tailored to your needs, we offer full customization options including dimensions, fin configurations, surface finishes, and mounting options, ensuring a perfect fit for your application.

High-Quality Aluminum Profile: Crafted from high-grade aluminum profiles, our heat sinks boast excellent thermal conductivity, corrosion resistance, and mechanical strength for long-lasting reliability.

Efficient Heat Dissipation: Engineered with optimized fin structures and geometries, our heat sinks maximize surface area to efficiently dissipate heat, preventing overheating and prolonging the lifespan of electronic components.

Versatile Applications: Suitable for a wide range of industries including electronics, telecommunications, automotive, LED lighting, and industrial equipment, our CNC heat sinks offer versatile solutions for diverse thermal management needs.

Advantages:

Superior Thermal Performance: Our CNC heat sinks deliver exceptional thermal management, maintaining optimal operating temperatures for electronic devices and ensuring reliable performance.

Customization Flexibility: We collaborate closely with you to understand your specific requirements and deliver customized heat sink solutions tailored to your exact specifications and application needs.

Cost-Effective Manufacturing: Through efficient CNC machining processes and optimized workflows, we offer cost-effective solutions without compromising on quality or performance.

Rapid Prototyping: With agile manufacturing capabilities, we provide quick turnaround times for prototyping and iterative design improvements, facilitating faster time-to-market for your products.

Applications:

Electronics: Ideal for cooling electronic components such as CPUs, GPUs, power transistors, and voltage regulators.

LED Lighting: Used in LED heat sink assemblies to maintain optimal operating temperatures and extend the lifespan of LED fixtures.

Automotive: Applied in automotive electronics, battery management systems, and LED headlights to dissipate heat generated during operation.

Telecommunications: Suitable for telecommunications equipment including servers, routers, and base stations to prevent overheating and ensure continuous operation.

Get in Touch:

Experience the precision and performance of our Customized CNC Heat Sink for your thermal management needs. Contact us today to discuss your requirements and explore customized solutions tailored to your applications.



Shenzhen Dongfeng Shengshi Hardware products Co., LTD



18682375931



905004489@qq.com



metalstamp-parts.com

Building 3, No.8 Zhenxing Road, Loucun Community, Xinhui Street, Guangming District, Shenzhen