



Customized Steel Cap Metal Heat Sink Stamping Bending Aluminum Heat Sink

Our Product Introduction

for more products please visit us on metalstamp-parts.com

Basic Information

- Place of Origin: China
- Minimum Order Quantity: 1000
- Price: \$ +1~10+Pcs
- Delivery Time: 15-20
- Payment Terms: L/C, D/A, D/P, T/T, Western Union, MoneyGram
- Supply Ability: 3000+pcs+Month



Product Specification

- Material: Aluminum Profiles
- Specifications: L=35MM,W=33MM,H=28MM
- Top: Extrude Heat Sink,Tec Heat Sink Cnc Parts Supply
- Keywords: Aluminum Heat Sink
- Lead Time: 2-3weeks,Determined By Your Quantity And Detailed Requirements
- Service: OEM/ODM,Custom Aluminum Heat Sink
- Highlight: **metal heat sink stamping,
customized metal heat sink,
customized graphite heat sink**

Product Description

Our Product Introduction

for more products please visit us on metalstamp-parts.com

Shenzhen Dongfeng Shengshi Hardware products Co., LTD

Choose us

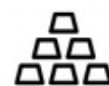
Combining affordability
and quality



Original price
sales



Multiple
specifications



Sufficient
raw materials



Fast
processing



Exquisite
craftsmanship



Invoiceable



Material

Aluminum profiles

Delivery time

20days

Price

\$1~10/pcs

Packing

12 in a box

specifications

L=35MM,
W=33MM,H=28MM

Service

Custom alumi
num heat sink

About Us

Direct wholesale, self-produced and self sold



Shenzhen Dongfeng Shengshi Hardware products Co., LTD



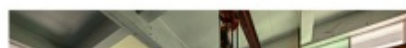
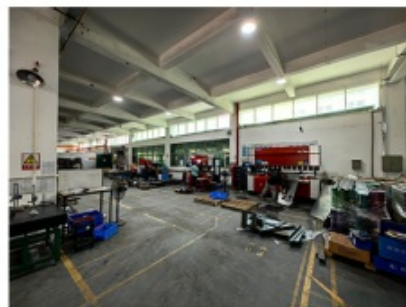
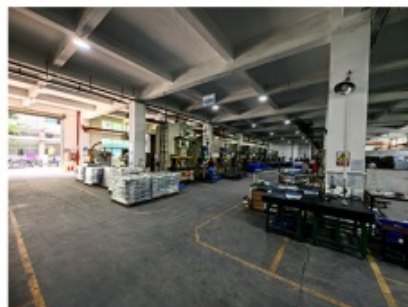
Company Profile



Shenzhen Dongfeng Shengshi Hardware Products Co., Ltd. was established in 2003 and is an ISO9001 certified factory. The company has been committed to the research and development, production and sales of hardware molds, ATM components, precision hinges, tapping parts, mechanical components, heat sinks, display hooks, and anti-theft series products. The company's main markets include North America, South America, Europe, Japan, Australia, and mainland China.

The company has complete equipment, mainly including: 48 large and small punches, 40 hand beer machines, 20 tapping machines, 25 drilling machines, 15 machining equipment, 6 lathes, 8 milling machines, 4 wire cutting machines, 5 precision grinders, CNC machining centers, spark machines, three production lines, and the quality management department's projectors, anemometer/cubic, hardness meters, altimeters, film thickness testers and other testing equipment.

The company adheres to the corporate tenet of "customer centeredness, quality as the foundation, continuous improvement and innovation, and continuous provision of high-quality products", constantly explores and strives to establish a good external image for the prosperous era of Dongfeng. We warmly welcome people from all walks of life to establish cooperative relationships with our company, work hand in hand, and create brilliance together!





After sales instructions



1. Are you a factory?

A: Yes, we are a factory with 21 years of experience, dedicated to the research and development, production, and sales of hardware molds, ATM components, precision hinges, stamping parts, mechanical components, heat sinks, display hooks, and anti-theft series products. Our main markets include North America, South America, Europe, Japan, Australia, and mainland China

2. What about the lead time?

A: 15-30 working days for mass production.

3. Do you have any MOQ limit for

A: Low MOQ, 1pc for sample checking is available.

4. How do you ship the goods and how long does it take to arrive?

A: Ship by DHL, UPS, FedEx or TNT. It takes 3-5 days to arrive. Airline and sea shipping also optional.

5. How to proceed an order for?

- 1) Firstly let us know your requirements or application.
- 2) Secondly We quote according to your requirements or our suggestions.
- 3) Thirdly customer confirms the samples and places deposit for formal order.
- 4) Fourthly We arrange the production.

6. what to be clearly indicated when I send you drawing?

A: You are kindly requested to let us know the raw material, finish and quantity at least.

7: What if we are not completely satisfied with the parts we re-

A: We will replace any parts that you are not satisfied with free of charge. If we make a mistake, we will work with you to correct it.



Factory



+ Factory supply

After sale



+ Multiple specifications

Examination



+ well stocked

Specifications



+ On time delivery

High quality



+ Integrity

Tailor-made



+ Support

Item	Description
Product Name	Customized Steel Cap Metal Heat Sink Stamping Bending Aluminum Heat Sink
Working Process	Blanking, stamping, Punching, deep drawing, bending, Coining, Curling,Forming, threading,welding, tapping, riveting, cnc machining, CNC Milling
Material	carbon steel, Stainless steel Aluminum, copper, brass, bronze (according to customer's requirements)
Surface Treatment	Galvanized, Zinc, nickel, chrome-plated, Powder Coating, Polishing, Spraying, Anodizing, Pickling, E-coating, etc.
Packing	Inner-Plastic Bag; Outer -Standard Carton Box + Pallet/Wood Case
Application	Automobiles, Construction, Transportation, Furniture, machinery, home appliance, electronic & electric appliance, Agricultural Equipments
Equipments	stamping/punching machine, CNC bending machine, CNC Laser cutting machine, 5-250T punching machines, Welding Manapulator
Thickness	0.5mm~12mm
File Format	Solidworks,Pro/Engineer,Auto CAD,PDF,JPG
Service	Warm and quick response service provided by the professional Export Sales Team with many years' experience in handling exports to the US, Europe, Japan and other countries and regions.
Inspection	100% QC as to each products

Introducing our specialized capabilities in Customized Steel Cap Metal Heat Sink Stamping and Bending Parts, designed to provide efficient thermal management solutions for a variety of applications. Utilizing advanced stamping and bending techniques, we create high-quality aluminum heat sinks tailored to your precise specifications and thermal requirements.

Key Features:

Customization: Our heat sink stamping and bending parts are fully customizable to meet your unique requirements, including size, shape, fin design, and surface finish.

Premium Materials: Crafted from high-grade aluminum alloys, our heat sinks offer excellent thermal conductivity, durability, and corrosion resistance for reliable performance.

Stamping and Bending Expertise: With years of experience in stamping and bending processes, our skilled technicians ensure precise and consistent manufacturing of heat sink components.

Efficient Heat Dissipation: Our custom-designed heat sinks feature optimized fin structures and profiles, maximizing surface area for enhanced heat dissipation and thermal management.

Durable Construction: Built to withstand demanding conditions, our heat sink parts are robustly constructed for long-term reliability in various applications.

Advantages:

Tailored Solutions: We work closely with you to understand your thermal management needs and provide customized heat sink solutions that meet your specific requirements.

Cost-Effective Manufacturing: Through efficient production processes and optimized workflows, we offer cost-effective solutions without compromising on quality or performance.

Rapid Prototyping: Our agile manufacturing capabilities enable quick turnaround times for prototyping and iterative design improvements, ensuring faster time-to-market for your products.

Quality Assurance: Rigorous quality control measures are implemented throughout the manufacturing process to uphold the highest standards of quality and consistency.

Applications:

Electronics: Ideal for cooling electronic components such as CPUs, GPUs, power transistors, and voltage regulators.

LED Lighting: Used in LED heat sink assemblies to maintain optimal operating temperatures and prolong LED lifespan.

Power Electronics: Suitable for power supplies, motor drives, inverters, and other high-power applications requiring efficient thermal management.

Automotive: Applied in automotive electronics, battery management systems, and LED headlights to dissipate heat generated during operation.

Get in Touch:

*Ready to optimize thermal performance with our Customized Steel Cap Metal Heat Sink Stamping and Bending Parts?
Contact us today to discuss your project requirements and explore customized solutions tailored to your needs.*



Shenzhen Dongfeng Shengshi Hardware products Co., LTD



18682375931



905004489@qq.com



metalstamp-parts.com

Building 3, No.8 Zhenxing Road, Loucun Community, Xihu Street, Guangming District, Shenzhen