



Network Display Hook Mesh Pieces And Grid Retail Store Display Hooks

Our Product Introduction

Basic Information

- Place of Origin: China
- Minimum Order Quantity: 1000
- Price: \$ +1~10+Pcs
- Delivery Time: 15-20
- Payment Terms: L/C, D/A, D/P, T/T, Western Union, MoneyGram
- Supply Ability: 3000+pcs+Month



Product Specification

- Material: Water Pumping Iron Wire
- Diameter: ϕ 5.5mm
- Length: 330mm Or Customized
- Surface Treatment: Black Baking Paint
- Applicable Bottom Plate Specifications: 25mm*83mm*2mm
- Feature: Waterproof, lds 2 One-sided Signs, Easy Assembly, customized
- Sample Time: 7-10 Days After Confirming, 1-2 Working Days, 7days
- Highlight: **network display hook, display hook mesh, grid retail store display hooks**

Product Description

Our Product Introduction

for more products please visit us on metalstamp-parts.com

Shenzhen Dongfeng Shengshi Hardware products Co., LTD



Choose us

Combining affordability and quality


Original price sales


Multiple specifications


Sufficient raw materials


Fast processing


Exquisite craftsmanship


Invoicable

L:330mm
floor:25mm*83mm*2mm



Material	Water pumping iron wire	Delivery time	20days
Price	\$3~5/pcs	length	330mm
floor	25mm*83mm*2mm	Packing	12 in a box

Diameter

$\phi 5.5\text{mm}$

surface treatment

Black baking paint

About Us

Direct wholesale, self-produced and self sold



Shenzhen Dongfeng Shengshi Hardware products Co., LTD



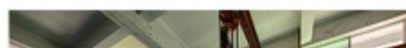
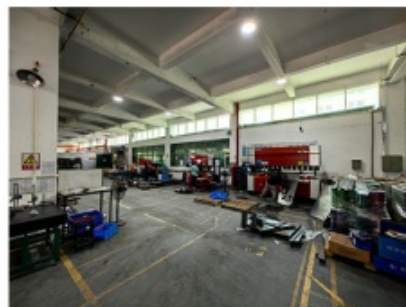
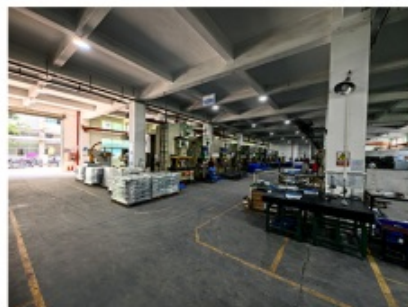
Company Profile



Shenzhen Dongfeng Shengshi Hardware Products Co., Ltd. was established in 2003 and is an ISO9001 certified factory. The company has been committed to the research and development, production and sales of hardware molds, ATM components, precision hinges, tampering parts, mechanical components, heat sinks, display hooks, and anti-theft series products. The company's main markets include North America, South America, Europe, Japan, Australia, and mainland China.

The company has complete equipment, mainly including: 48 large and small punches, 40 hand beer machines, 20 tapping machines, 25 drilling machines, 15 machining equipment, 6 lathes, 8 milling machines, 4 wire cutting machines, 5 precision grinders, CNC machining centers, spark machines, three production lines, and the quality management department's projectors, anemometer/cubic, hardness meters, altimeters, film thickness testers and other testing equipment.

The company adheres to the corporate tenet of "customer centeredness, quality as the foundation, continuous improvement and innovation, and continuous provision of high-quality products", constantly explores and strives to establish a good external image for the prosperous era of Dongfeng. We warmly welcome people from all walks of life to establish cooperative relationships with our company, work hand in hand, and create brilliance together!





After sales instructions



1. Are you a factory?

A: Yes, we are a factory with 21 years of experience, dedicated to the research and development, production, and sales of hardware molds, ATM components, precision hinges, stamping parts, mechanical components, heat sinks, display hooks, and anti-theft series products. Our main markets include North America, South America, Europe, Japan, Australia, and mainland China

2. What about the lead time?

A: 15-30 working days for mass production.

3. Do you have any MOQ limit for

A: Low MOQ, 1pc for sample checking is available.

4. How do you ship the goods and how long does it take to arrive?

A: Ship by DHL, UPS, FedEx or TNT. It takes 3-5 days to arrive. Airline and sea shipping also optional.

5. How to proceed an order for?

- 1) Firstly let us know your requirements or application.
- 2) Secondly We quote according to your requirements or our suggestions.
- 3) Thirdly customer confirms the samples and places deposit for formal order.
- 4) Fourthly We arrange the production.

6. what to be clearly indicated when I send you drawing?

A: You are kindly requested to let us know the raw material, finish and quantity at least.

7: What if we are not completely satisfied with the parts we re-

A: We will replace any parts that you are not satisfied with free of charge. If we make a mistake, we will work with you to correct it.



Factory



+ Factory supply

After sale



+ Multiple specifications

Examination



+ well stocked

Specifications



+ On time delivery

High quality



+ Integrity

Tailor-made



+ Support

Item	Description
Product Name	Network Display Hook Mesh Pieces And Grid Retail Store Display Hooks
Working Process	Blanking, stamping, Punching, deep drawing, bending, Coining, Curling,Forming, threading,welding, tapping, riveting, cnc machining, CNC Milling
Material	carbon steel, Stainless steel Aluminum, copper, brass, bronze (according to customer's requirements)
Surface Treatment	Galvanized, Zinc, nickel, chrome-plated, Powder Coating, Polishing, Spraying, Anodizing, Pickling, E-coating, etc.
Packing	Inner-Plastic Bag; Outer -Standard Carton Box + Pallet/Wood Case
Application	Automobiles, Construction, Transportation, Furniture, machinery, home appliance, electronic & electric appliance, Agricultural Equipments
Equipments	stamping/punching machine, CNC bending machine, CNC Laser cutting machine, 5-250T punching machines, Welding Manapulator
Thickness	0.5mm~12mm
File Format	Solidworks,Pro/Engineer,Auto CAD,PDF,JPG
Service	Warm and quick response service provided by the professional Export Sales Team with many years' experience in handling exports to the US, Europe, Japan and other countries and regions.
Inspection	100% QC as to each products

factory-direct sales display of network hooks, mesh pieces, and grid hooks, designed to offer versatile solutions for organizing and displaying items in retail, industrial, and commercial settings. Crafted with precision and durability, our display hooks and mesh pieces provide efficient storage and organization while optimizing space utilization.

Key Features:

Versatile Display Solutions: Our product range includes network hooks, mesh pieces, and grid hooks, offering versatile options for displaying a wide variety of items such as merchandise, tools, accessories, and more.

Sturdy Construction: Constructed from high-quality materials such as steel or aluminum, our display hooks and mesh pieces are durable and long-lasting, capable of withstanding heavy loads and frequent use.

Customizable Configurations: With various sizes, shapes, and configurations available, our display products can be tailored to meet your specific display requirements and space constraints.

Easy Installation: Designed for quick and hassle-free installation, our display hooks and mesh pieces come with mounting hardware or attachment mechanisms for convenient setup.

Space Optimization: Our display solutions are designed to maximize space utilization, allowing you to effectively showcase your products and optimize the layout of your retail or industrial space.

Advantages:

Direct from the Factory: By sourcing directly from our factory, you benefit from competitive pricing without sacrificing quality, ensuring cost-effective solutions for your display needs.

Durable and Reliable: Built to withstand the rigors of daily use, our display hooks and mesh pieces offer long-term reliability and performance, reducing the need for frequent replacements.

Versatile Applications: Suitable for a wide range of environments including retail stores, warehouses, workshops, garages, and more, our display solutions provide versatile storage and organization options.

Customization Options: We offer customization options to accommodate your specific display requirements, including custom sizes, configurations, and finishes to match your branding or décor.

Applications:

Retail Displays: Ideal for showcasing merchandise, clothing, accessories, and other retail products in stores, boutiques, and pop-up shops.

Industrial Storage: Used for organizing tools, equipment, and supplies in warehouses, workshops, manufacturing facilities, and distribution centers.

Commercial Spaces: Suitable for displaying promotional materials, signage, literature, and product samples in trade shows,

exhibitions, and commercial environments.

Get in Touch:

Transform your retail or industrial space with our factory-direct display solutions. Contact us today to discuss your display requirements and explore our range of network hooks, mesh pieces, and grid hooks tailored to your needs.



Shenzhen Dongfeng Shengshi Hardware products Co., LTD



18682375931



905004489@qq.com



metalstamp-parts.com

Building 3, No.8 Zhenxing Road, Loucun Community, Xihu Street, Guangming District, Shenzhen