



## Iron Wire Mesh Display Hooks Bright Chrome 115mm Grid Mesh Hooks

### Our Product Introduction

#### Basic Information

- Place of Origin: China
- Minimum Order Quantity: 1000
- Price: \$ +1~10+Pcs
- Delivery Time: 15-20
- Payment Terms: L/C, D/A, D/P, T/T, Western Union, MoneyGram
- Supply Ability: 3000+pcs+Month



#### Product Specification

- Material: Water Pumping Iron Wire
- Diameter:  $\phi$  6mm
- Length: 115mm Or Customized
- Surface Treatment: Bright Chrome Plating
- Applicable Bottom Plate Specifications: 25mm\*83mm\*2mm
- Highlight: iron wire mesh display hooks,  
115mm grid mesh hooks,  
wire mesh display hooks bright chrome

## Product Description

## Our Product Introduction

for more products please visit us on [metalstamp-parts.com](http://metalstamp-parts.com)

Shenzhen Dongfeng Shengshi Hardware products Co., LTD

Choose us

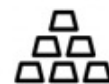
Combining affordability  
and quality



Original price  
sales



Multiple  
specifications



Sufficient  
raw materials



Fast  
processing



Exquisite  
craftsmanship



Invoicable



L:115mm

floor:25mm\*83mm\*2mm

Diameter:  $\phi$ 6mm



Material

Water pumping iron wire

Delivery time

20days

Price

\$3~5/pcs

length

115mm

floor

25mm\*83mm\*2mm

Packing

12 in a box

Diameter

φ6mm

surface treatment

Bright chrome  
plating

# About Us

Direct wholesale, self-produced and self sold



Shenzhen Dongfeng Shengshi Hardware products Co., LTD



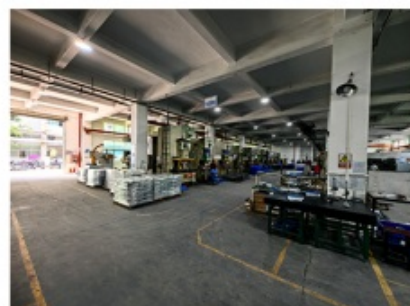
Company Profile



Shenzhen Dongfeng Shengshi Hardware Products Co., Ltd. was established in 2003 and is an ISO9001 certified factory. The company has been committed to the research and development, production and sales of hardware molds, ATM components, precision hinges, tampering parts, mechanical components, heat sinks, display hooks, and anti-theft series products. The company's main markets include North America, South America, Europe, Japan, Australia, and mainland China.

The company has complete equipment, mainly including: 48 large and small punches, 40 hand beer machines, 20 tapping machines, 25 drilling machines, 15 machining equipment, 6 lathes, 8 milling machines, 4 wire cutting machines, 5 precision grinders, CNC machining centers, spark machines, three production lines, and the quality management department's projectors, anemometer/cubic, hardness meters, altimeters, film thickness testers and other testing equipment.

The company adheres to the corporate tenet of "customer centeredness, quality as the foundation, continuous improvement and innovation, and continuous provision of high-quality products", constantly explores and strives to establish a good external image for the prosperous era of Dongfeng. We warmly welcome people from all walks of life to establish cooperative relationships with our company, work hand in hand, and create brilliance together!





After sales instructions



### 1. Are you a factory?

A: Yes, we are a factory with 21 years of experience, dedicated to the research and development, production, and sales of hardware molds, ATM components, precision hinges, stamping parts, mechanical components, heat sinks, display hooks, and anti-theft series products. Our main markets include North America, South America, Europe, Japan, Australia, and mainland China

### 2. What about the lead time?

A: 15-30 working days for mass production.

### 3. Do you have any MOQ limit for

A: Low MOQ, 1pc for sample checking is available.

### 4. How do you ship the goods and how long does it take to arrive?

A: Ship by DHL, UPS, FedEx or TNT. It takes 3-5 days to arrive. Airline and sea shipping also optional.

## 5. How to proceed an order for?

- 1) Firstly let us know your requirements or application.
- 2) Secondly We quote according to your requirements or our suggestions.
- 3) Thirdly customer confirms the samples and places deposit for formal order.
- 4) Fourthly We arrange the production.

## 6. what to be clearly indicated when I send you drawing?

A: You are kindly requested to let us know the raw material, finish and quantity at least.

## 7: What if we are not completely satisfied with the parts we re-

A: We will replace any parts that you are not satisfied with free of charge. If we make a mistake, we will work with you to correct it.



Factory



+ Factory supply

After sale



+ Multiple specifications

Examination



+ well stocked

Specifications



+ On time delivery

High quality



+ Integrity

Tailor-made



+ Support



management

customization

Shenzhen Dongfeng Shengshi Hardware products Co., LTD

Item	Description
Product Name	Iron Wire Mesh Display Hooks Bright Chrome 115mm Grid Mesh Hooks
Working Process	Blanking, stamping, Punching, deep drawing, bending, Coining, Curling,Forming, threading,welding, tapping, riveting, cnc machining, CNC Milling
Material	carbon steel, Stainless steel Aluminum, copper, brass, bronze (according to customer's requirements)
Surface Treatment	Galvanized, Zinc, nickel, chrome-plated, Powder Coating, Polishing, Spraying, Anodizing, Pickling, E-coating, etc.
Packing	Inner-Plastic Bag; Outer -Standard Carton Box + Pallet/Wood Case
Application	Automobiles, Construction, Transportation, Furniture, machinery, home appliance, electronic & electric appliance, Agricultural Equipments
Equipments	stamping/punching machine, CNC bending machine, CNC Laser cutting machine, 5-250T punching machines, Welding Manapulator
Thickness	0.5mm~12mm
File Format	Solidworks,Pro/Engineer,Auto CAD,PDF,JPG
Service	Warm and quick response service provided by the professional Export Sales Team with many years' experience in handling exports to the US, Europe, Japan and other countries and regions.
Inspection	100% QC as to each products

Explore our wholesale collection of hot selling display hooks and mesh shelves, designed to meet the diverse needs of manufacturers, retailers, and commercial spaces. Our high-quality display solutions offer efficient organization and attractive presentation of various products, ensuring optimal functionality and aesthetic appeal.

### Key Features:

**Wide Range of Display Hooks:** Our collection includes a variety of hooks, such as single line hooks, S-hooks, and specialized hooks for different products, providing versatile display options for your merchandise.

**Durable Mesh Shelves:** Crafted from robust materials like steel and aluminum, our mesh shelves are built to last, offering reliable support for a wide range of items while ensuring excellent visibility and accessibility.

**Customizable Solutions:** We offer customizable display options to meet your specific needs, including different sizes, shapes, configurations, and finishes to complement your store layout and branding.

**Easy Installation:** Designed for quick and hassle-free setup, our hooks and shelves come with straightforward installation mechanisms, allowing you to create and adjust your displays with ease.

**Efficient Space Utilization:** Our display solutions are engineered to maximize space, helping you organize and showcase your products effectively, making the most of your available retail or storage area.

### Advantages:

**High-Quality Construction:** Made from premium materials, our display hooks and mesh shelves are designed for durability and long-term use, capable of supporting various weights and withstand frequent handling.

**Competitive Wholesale Pricing:** We offer factory-direct prices, providing cost-effective solutions that deliver excellent value for manufacturers and retailers looking to optimize their display and storage systems.

**Versatile Applications:** Suitable for a wide range of industries, our display solutions cater to manufacturers, retail stores, supermarkets, workshops, and more, offering flexibility and adaptability for different environments.

**Improved Organization:** Our hooks and shelves facilitate efficient organization and easy access to products, enhancing the shopping experience for customers and streamlining operations for staff.

### Applications:

**Retail Stores:** Ideal for displaying a variety of merchandise, including clothing, accessories, electronics, and household items, in an organized and visually appealing manner.

**Supermarkets:** Perfect for showcasing packaged goods, snacks, and small items on standard supermarket shelving

systems.

**Manufacturing Facilities:** Useful for organizing tools, parts, and supplies in workshops and production areas, ensuring easy access and efficient workflow.

**Trade Shows and Exhibitions:** Effective for creating attractive and accessible displays of promotional materials, samples, and merchandise in commercial spaces.

### Get in Touch:

*Enhance your display and storage solutions with our wholesale hot selling display hooks and mesh shelves. Contact us today to discuss your requirements and explore our range of customizable options tailored to your needs.*



**Shenzhen Dongfeng Shengshi Hardware products Co., LTD**



18682375931



905004489@qq.com



metalstamp-parts.com

Building 3, No.8 Zhenxing Road, Loucun Community, Xinhua Street, Guangming District, Shenzhen