



Nail Wall Mounted Display Hooks Single Line Display Hooks For Wall

Our Product Introduction

Basic Information

- Place of Origin: China
- Minimum Order Quantity: 1000
- Price: \$ +1~10+Pcs
- Delivery Time: 15-20
- Payment Terms: L/C, D/A, D/P, T/T, Western Union, MoneyGram
- Supply Ability: 3000+pcs+Month



Product Specification

- Material: Water Pumping Iron Wire
- Diameter: ϕ 6mm
- Length: 222/322mm Or Customized
- Surface Treatment: Bright Chrome Plating
- Applicable Bottom Plate Specifications: 25mm*83mm*2mm
- Sample Time: 7-10 Days After Confirming, 1-2 Working Days, 7days
- Highlight: **Nail Wall Mounted Display Hooks, Wall Mounted Display Hooks Single Line, Single Line Display Hooks For Wall**

Shenzhen Dongfeng Shengshi Hardware products Co., LTD



Choose us

Combining affordability and quality


Original price sales

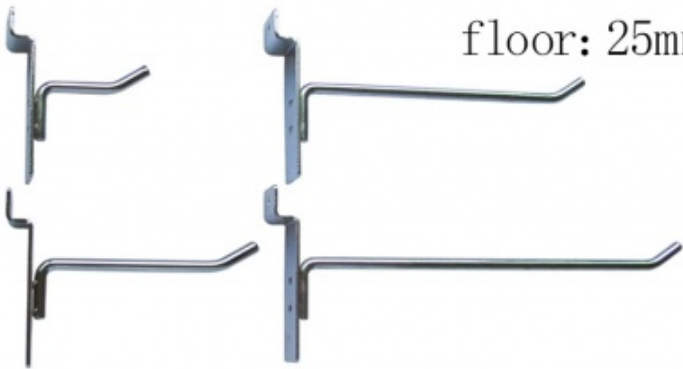

Multiple specifications


Sufficient raw materials


Fast processing


Exquisite craftsmanship


Invoicable



L:222/322mm
Diameter: ϕ 6mm
floor: 25mm*83mm*2mm

Material	<u>Water pumping iron wire</u>	Delivery time	<u>20days</u>
Price	<u>\$3~5/pcs</u>	length	<u>222/322mm</u>
floor	<u>25mm*83mm*2mm</u>	Packing	<u>12 in a box</u>

Diameter

$\phi 6\text{mm}$

surface treatment

Bright chrome
plating

About Us

Direct wholesale, self-produced and self sold



Shenzhen Dongfeng Shengshi Hardware products Co., LTD



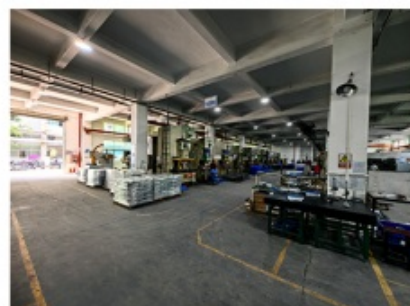
Company Profile



Shenzhen Dongfeng Shengshi Hardware Products Co., Ltd. was established in 2003 and is an ISO9001 certified factory. The company has been committed to the research and development, production and sales of hardware molds, ATM components, precision hinges, tampering parts, mechanical components, heat sinks, display hooks, and anti-theft series products. The company's main markets include North America, South America, Europe, Japan, Australia, and mainland China.

The company has complete equipment, mainly including: 48 large and small punches, 40 hand beer machines, 20 tapping machines, 25 drilling machines, 15 machining equipment, 6 lathes, 8 milling machines, 4 wire cutting machines, 5 precision grinders, CNC machining centers, spark machines, three production lines, and the quality management department's projectors, anemometer/cubic, hardness meters, altimeters, film thickness testers and other testing equipment.

The company adheres to the corporate tenet of "customer centeredness, quality as the foundation, continuous improvement and innovation, and continuous provision of high-quality products", constantly explores and strives to establish a good external image for the prosperous era of Dongfeng. We warmly welcome people from all walks of life to establish cooperative relationships with our company, work hand in hand, and create brilliance together!





After sales instructions



1. Are you a factory?

A: Yes, we are a factory with 21 years of experience, dedicated to the research and development, production, and sales of hardware molds, ATM components, precision hinges, stamping parts, mechanical components, heat sinks, display hooks, and anti-theft series products. Our main markets include North America, South America, Europe, Japan, Australia, and mainland China

2. What about the lead time?

A: 15-30 working days for mass production.

3. Do you have any MOQ limit for

A: Low MOQ, 1pc for sample checking is available.

4. How do you ship the goods and how long does it take to arrive?

A: Ship by DHL, UPS, FedEx or TNT. It takes 3-5 days to arrive. Airline and sea shipping also optional.

5. How to proceed an order for?

- 1) Firstly let us know your requirements or application.
- 2) Secondly We quote according to your requirements or our suggestions.
- 3) Thirdly customer confirms the samples and places deposit for formal order.
- 4) Fourthly We arrange the production.

6. what to be clearly indicated when I send you drawing?

A: You are kindly requested to let us know the raw material, finish and quantity at least.

7: What if we are not completely satisfied with the parts we re-

A: We will replace any parts that you are not satisfied with free of charge. If we make a mistake, we will work with you to correct it.



Factory



+ Factory supply

After sale



+ Multiple specifications

Examination



+ well stocked

Specifications



+ On time delivery

High quality



+ Integrity

Tailor-made



+ Support

management

customization

Shenzhen Dongfeng Shengshi Hardware products Co., LTD

Item	Description
Product Name	Nail Wall Mounted Display Hooks Single Line Display Hooks For Wall
Working Process	Blanking, stamping, Punching, deep drawing, bending, Coining, Curling,Forming, threading,welding, tapping, riveting, cnc machining, CNC Milling
Material	carbon steel, Stainless steel Aluminum, copper, brass, bronze (according to customer's requirements)
Surface Treatment	Galvanized, Zinc, nickel, chrome-plated, Powder Coating, Polishing, Spraying, Anodizing, Pickling, E-coating, etc.
Packing	Inner-Plastic Bag; Outer -Standard Carton Box + Pallet/Wood Case
Application	Automobiles, Construction, Transportation, Furniture, machinery, home appliance, electronic & electric appliance, Agricultural Equipments
Equipments	stamping/punching machine, CNC bending machine, CNC Laser cutting machine, 5-250T punching machines, Welding Manapulator
Thickness	0.5mm~12mm
File Format	Solidworks,Pro/Engineer,Auto CAD,PDF,JPG
Service	Warm and quick response service provided by the professional Export Sales Team with many years' experience in handling exports to the US, Europe, Japan and other countries and regions.
Inspection	100% QC as to each products

Enhance your retail and storage solutions with our range of wall hooks, nail wall display accessories, single line hooks, and nail wall shelves. As a manufacturer offering direct sales, we provide high-quality products designed for durability, versatility, and efficient organization in various commercial and industrial settings.

Key Features:

Wall Hooks: Perfect for organizing and displaying items in retail stores, workshops, and homes. Our wall hooks are available in various sizes and styles to accommodate different types of merchandise.

Nail Wall Display Accessories: Designed to fit standard nail walls, these accessories offer a secure and flexible display option for a wide range of products, from tools and hardware to retail items.

Single Line Hooks: Ideal for hanging individual items such as clothing, accessories, and tools. These hooks provide a neat and accessible display, making products easy to browse and select.

Nail Wall Shelves: Sturdy and reliable, our nail wall shelves are perfect for storing and displaying items in an organized manner. They are designed to fit seamlessly into nail wall systems, providing additional storage space.

High-Quality Materials: Made from durable materials like steel and aluminum, our products are built to withstand heavy use and provide long-lasting performance.

Advantages:

Direct Manufacturer Sales: Benefit from competitive pricing and high-quality products by purchasing directly from the manufacturer, ensuring cost-effective solutions without compromising on quality.

Versatile Display Solutions: Our range of hooks and shelves can be customized to fit various display needs, making them suitable for different environments including retail stores, workshops, and garages.

Durable Construction: Constructed from robust materials, our products offer excellent durability and reliability, capable of supporting various weights and withstanding frequent use.

Easy Installation: Designed for straightforward installation, our hooks and shelves can be easily set up and adjusted, allowing you to create and modify your displays as needed.

Efficient Space Utilization: Our display solutions are engineered to maximize space, helping you organize and showcase products effectively, improving both functionality and aesthetic appeal.

Applications:

Retail Stores: Ideal for displaying a wide array of merchandise such as clothing, accessories, electronics, and household items in an organized and visually appealing manner.

Supermarkets: Perfect for showcasing packaged goods, snacks, and small items on standard supermarket shelving systems, enhancing product accessibility and visibility.

Workshops and Garages: Useful for organizing tools, parts, and supplies, ensuring easy access and efficient workflow in workshops and production areas.

Trade Shows and Exhibitions: Effective for creating attractive and accessible displays of promotional materials, samples, and merchandise in commercial spaces.

Get in Touch:

Enhance your display and storage solutions with our manufacturer-direct wall hooks, nail wall display accessories, single line hooks, and nail wall shelves. Contact us today to discuss your requirements and explore our range of customizable options tailored to your needs.



Shenzhen Dongfeng Shengshi Hardware products Co., LTD



18682375931



905004489@qq.com



metalstamp-parts.com

Building 3, No.8 Zhenxing Road, Loucun Community, Xinhui Street, Guangming District, Shenzhen