



Professional hardware stamping sheet metal factory manufacturing SUS304 stainless steel torsion hinges

Our Product Introduction

Basic Information

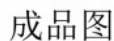
- Place of Origin: China
- Minimum Order Quantity: 1000
- Price: \$ +1~10+Pcs
- Delivery Time: 15-20
- Payment Terms: L/C, D/A, D/P, T/T, Western Union, MoneyGram
- Supply Ability: 3000+pcs+Month



Product Specification

- Product Name: Hinge Page
- Materia: SUS304
- Dimension: L40mm*W35mm
- Axes: $\varnothing 4.0$ *L38.5mm
- Surface Treatment: Vibration Grinding
- Aplication: Mechanical Equipment, Door Frames, Cabinets, Etc
- Source Material: 1. Hinges (A) 2. Hinges (B) 3. C-type Shrapnel 4. C-type Adhesive Parts 5. Rivet The Gasket Tightly 6. Shaft Washer 7. Rivets 8. Shaft Sleeve 9. Axis
- Highlight: **Torque Hinges Stainless Steel Stamping, Hinges Stainless Steel Stamping Parts, Machining Heavy Duty Torque Hinge**

DTG 11001400 LTV



DFS-HSS1235-L40

模具编号			东峰盛五金制品有限公司					
产品编号	DPS-B05J230-148		零件名称	TH-125-4合页		数量	1	
材质	—	料厚	—	设计	日期	陈永强	单位	副
料宽	—	步距	—	审核	日期	—	比例	1:1



Product Name	Hinge page
Material	SUS304
Specifications	L40mm*W35mm
Axes	ø4.0*L38.5mm
surface treatment	Vibration grinding
Aplication	Mechanical equipment, door frames, cabinets, etc

source material

1. hinges (A) *1
2. hinges (B) *1
3. C-type shrapnel *1
4. C-type adhesive parts *1
5. Rivet the gasket tightly *1
6. Shaft washer *1
7. Rivets *1
8. Shaft sleeve *2
9. Axis *1

Shenzhen Dongfeng Shengshi Hardware products Co., LTD

About Us

Direct wholesale, self-produced and self sold



Shenzhen Dongfeng Shengshi Hardware products Co., LTD



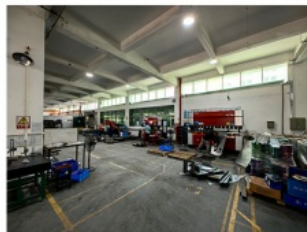
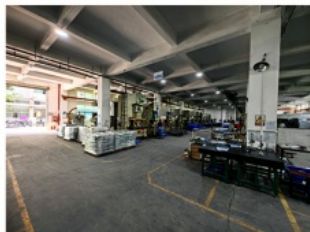
Company Profile



Shenzhen Dongfeng Shengshi Hardware Products Co., Ltd. was established in 2003 and is an ISO9001 certified factory. The company has been committed to the research and development, production and sales of hardware molds, ATM components, precision hinges, stamping parts, mechanical components, heat sinks, display hooks, and anti-theft series products. The company's main markets include North America, South America, Europe, Japan, Australia, and mainland China.

The company has complete equipment, mainly including: 48 large and small punches, 40 hand beer machines, 20 tapping machines, 25 drilling machines, 15 machining equipment, 6 lathes, 8 milling machines, 4 wire cutting machines, 5 precision grinders, CNC machining centers, spark machines, three production lines, and the quality management department's projectors, anemometer/cubic, hardness meters, altimeters, film thickness testers and other testing equipment.

The company adheres to the corporate tenet of "customer centeredness, quality as the foundation, continuous improvement and innovation, and continuous provision of high-quality products", constantly explores and strives to establish a good external image for the prosperous era of Dongfeng. We warmly welcome people from all walks of life to establish cooperative relationships with our company, work hand in hand, and create brilliance together!



Professional hardware accessory processing

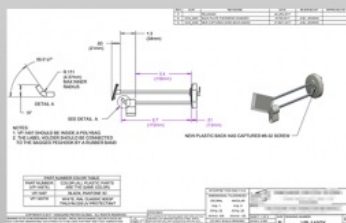
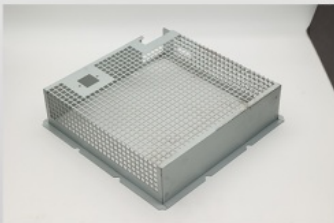
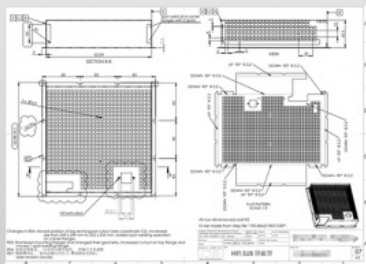
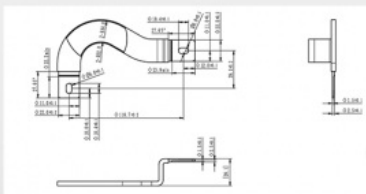
Free redo if the drawing requirements are not met

We guarantee production quality through standardized processes, innovate production, and specialize in non-standard processing. Our quality standards are determined by you!



Provide drawings or samples

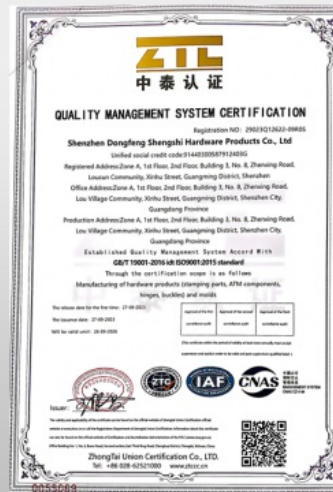
Strictly follow the requirements for production



Qualification certificate

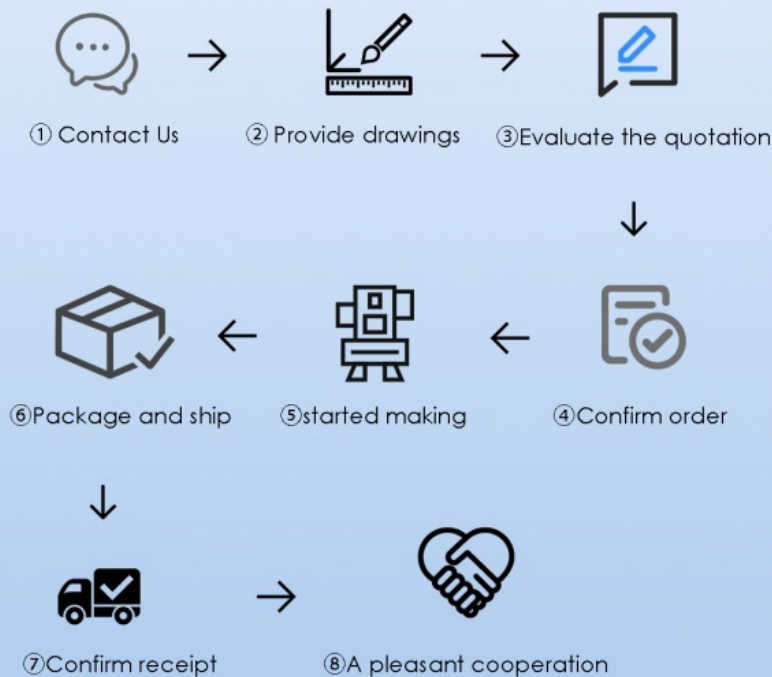
Qualification certification, quality assurance

Complies with national testing standards, recognized quality and integrity, undergoes rigorous testing, allowing you to use with confidence



Machining Process

EXPERIENCE AND TECHNOLOGY OF
PRECIPITATION FOR YOU TO BRING PRODUCT PROTECTION



Factory



+ Factory supply

After sale



+ Multiple specifications

Examination



+ well stocked

Specifications



+ On time delivery

High quality



+ Integrity management

Tailor-made



+ Support customization

After sales instructions



1. Are you a factory?

A: Yes, we are a factory with 21 years of experience, dedicated to the research and development, production, and sales of hardware molds, ATM components, precision hinges, stamping parts, mechanical components, heat sinks, display hooks, and anti-theft series products. Our main markets include North America, South America, Europe, Japan, Australia, and mainland China

2. What about the lead time?

A: 15-30 working days for mass production.

3. Do you have any MOQ limit for

A: Low MOQ, 1pc for sample checking is available.

4. How do you ship the goods and how long does it take to arrive?

A: Ship by DHL, UPS, FedEx or TNT. It takes 3-5 days to arrive. Airline and sea shipping also optional.

5. How to proceed an order for?

5. How to proceed an order for:

- 1) Firstly let us know your requirements or application.
- 2) Secondly We quote according to your requirements or our suggestions.
- 3) Thirdly customer confirms the samples and places deposit for formal order.
- 4) Fourthly We arrange the production.

6. what to be clearly indicated when I send you drawing?

A: You are kindly requested to let us know the raw material, finish and quantity at least.

7: What if we are not completely satisfied with the parts we re-

A: We will replace any parts that you are not satisfied with free of charge. If we make a mistake, we will work with you to correct it.

■ Shenzhen Dongfeng Shengshi Hardware products Co., LTD ■



Shenzhen Dongfeng Shengshi Hardware products Co., LTD



18682375931



905004489@qq.com



metalstamp-parts.com

Building 3, No.8 Zhenxing Road, Loucun Community, Xinhua Street, Guangming District, Shenzhen