



Precision Flat Hinge Sturdy And Durable Custom Hinge Fabrication

Our Product Introduction

for more products please visit us on metalstamp-parts.com

Basic Information

- Place of Origin: China
- Minimum Order Quantity: 1000
- Price: \$ +1~10+Pcs
- Delivery Time: 15-20
- Payment Terms: L/C, D/A, D/P, T/T, Western Union, MoneyGram
- Supply Ability: 3000+pcs+Month



Product Specification

- Materia: SUS304-CP-2B
- Thickness: 1.5mm
- Dimension: L150*W36mm
- Axes: SUS304 $\phi 3.5$ *L150mm
- Surface Finish: Polishing
- Application: ATM Cabinet Connection Accessories, Suitable For Various Types Of Cabinets Such As Distribution Cabinets, Communication Cabinets, Instrument Boxes, Control Boxes, Etc
- Precision: GB/T1804-f
- Highlight: **Precision Flat Hinge,
Sturdy Custom Hinge Fabrication,
Durable Custom Hinge Fabrication**

Shenzhen Dongfeng Shengshi Hardware products Co., LTD



Choose us

Combining affordability and quality

Original price sales

Multiple specifications

Sufficient raw materials

Fast processing

Exquisite craftsmanship

Invoicable



Material	<u>SUS304-CP-2B</u>	Delivery time	<u>20days</u>
Price	<u>\$1~10/pcs</u>	Material thickness	<u>1.5mm</u>
specifications	<u>L150*W36mm</u>	axis	<u>&oslash; 3.5*L150mm</u>

About Us

Direct wholesale, self-produced and self sold



Shenzhen Dongfeng Shengshi Hardware products Co., LTD



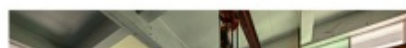
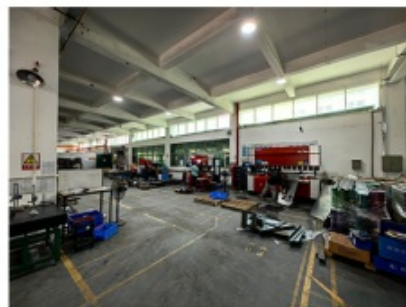
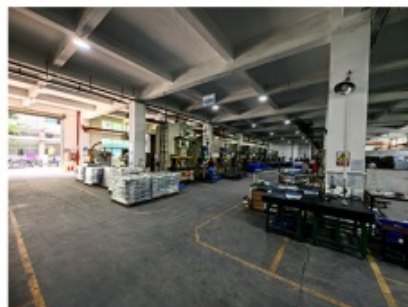
Company Profile



Shenzhen Dongfeng Shengshi Hardware Products Co., Ltd. was established in 2003 and is an ISO9001 certified factory. The company has been committed to the research and development, production and sales of hardware molds, ATM components, precision hinges, tampering parts, mechanical components, heat sinks, display hooks, and anti-theft series products. The company's main markets include North America, South America, Europe, Japan, Australia, and mainland China.

The company has complete equipment, mainly including: 48 large and small punches, 40 hand beer machines, 20 tapping machines, 25 drilling machines, 15 machining equipment, 6 lathes, 8 milling machines, 4 wire cutting machines, 5 precision grinders, CNC machining centers, spark machines, three production lines, and the quality management department's projectors, anemometer/cubic, hardness meters, altimeters, film thickness testers and other testing equipment.

The company adheres to the corporate tenet of "customer centeredness, quality as the foundation, continuous improvement and innovation, and continuous provision of high-quality products", constantly explores and strives to establish a good external image for the prosperous era of Dongfeng. We warmly welcome people from all walks of life to establish cooperative relationships with our company, work hand in hand, and create brilliance together!





After sales instructions



1. Are you a factory?

A: Yes, we are a factory with 21 years of experience, dedicated to the research and development, production, and sales of hardware molds, ATM components, precision hinges, stamping parts, mechanical components, heat sinks, display hooks, and anti-theft series products. Our main markets include North America, South America, Europe, Japan, Australia, and mainland China

2. What about the lead time?

A: 15-30 working days for mass production.

3. Do you have any MOQ limit for

A: Low MOQ, 1pc for sample checking is available.

4. How do you ship the goods and how long does it take to arrive?

A: Ship by DHL, UPS, FedEx or TNT. It takes 3-5 days to arrive. Airline and sea shipping also optional.

5. How to proceed an order for?

- 1) Firstly let us know your requirements or application.
- 2) Secondly We quote according to your requirements or our suggestions.
- 3) Thirdly customer confirms the samples and places deposit for formal order.
- 4) Fourthly We arrange the production.

6. what to be clearly indicated when I send you drawing?

A: You are kindly requested to let us know the raw material, finish and quantity at least.

7: What if we are not completely satisfied with the parts we re-

A: We will replace any parts that you are not satisfied with free of charge. If we make a mistake, we will work with you to correct it.



Factory



+ Factory supply

After sale



+ Multiple specifications

Examination



+ well stocked

Specifications



+ On time delivery

High quality



+ Integrity

Tailor-made



+ Support

management

customization

Shenzhen Dongfeng Shengshi Hardware products Co., LTD

Item	Description
Product Name	Precision Flat Hinge Sturdy And Durable Custom Hinge Fabrication
Working Process	Blanking, stamping, Punching, deep drawing, bending, Coining, Curling,Forming, threading,welding, tapping, riveting, cnc machining, CNC Milling
Material	carbon steel, Stainless steel Aluminum, copper, brass, bronze (according to customer's requirements)
Surface Treatment	Galvanized, Zinc, nickel, chrome-plated, Powder Coating, Polishing, Spraying, Anodizing, Pickling, E-coating, etc.
Packing	Inner-Plastic Bag; Outer -Standard Carton Box + Pallet/Wood Case
Application	Automobiles, Construction, Transportation, Furniture, machinery, home appliance, electronic & electric appliance, Agricultural Equipments
Equipments	stamping/punching machine, CNC bending machine, CNC Laser cutting machine, 5-250T punching machines, Welding Manapulator
Thickness	0.5mm~12mm
File Format	Solidworks,Pro/Engineer,Auto CAD,PDF,JPG
Service	Warm and quick response service provided by the professional Export Sales Team with many years' experience in handling exports to the US, Europe, Japan and other countries and regions.
Inspection	100% QC as to each products

Professional factory manufacturing of high-quality precision flat hinges, sturdy and durable wholesale price

Elevate your projects with our professional factory-manufactured high-quality precision flat hinges. Designed for durability and reliability, these hinges offer exceptional strength and functionality at a wholesale price, making them the ideal choice for various applications.

Key Features:

High-Quality Manufacturing: Crafted by our professional factory using precision techniques and quality materials, our flat hinges ensure consistent performance and longevity.

Precision Engineering: Each hinge is meticulously engineered to offer smooth operation and a precise fit, guaranteeing reliable performance in any application.

Sturdy and Durable: Constructed from high-quality materials such as stainless steel or brass, our hinges are built to withstand heavy use and provide long-lasting durability.

Versatile Design: Available in various sizes, finishes, and configurations, our flat hinges can be tailored to suit a wide range of projects and applications.

Wholesale Pricing: Benefit from competitive wholesale pricing by purchasing directly from the manufacturer, ensuring excellent value for money without compromising on quality.

Advantages:

Exceptional Strength: Our flat hinges are designed to provide robust support and stability, making them suitable for use in demanding environments and heavy-duty applications.

Smooth Operation: Engineered for smooth and silent operation, our hinges ensure hassle-free opening and closing of doors, cabinets, and other fixtures.

Reliable Performance: With their precise fit and durable construction, our hinges deliver reliable performance over time, minimizing the need for maintenance and replacement.

Cost-Effective Solution: By offering wholesale pricing, we provide a cost-effective solution for projects of any scale, whether you're a contractor, builder, or DIY enthusiast.

Wide Range of Applications: Suitable for residential, commercial, and industrial applications, our flat hinges can be used in doors, cabinets, furniture, and more.

Applications:

Residential Projects: Ideal for use in doors, cabinets, and furniture in homes and apartments, providing reliable performance and durability.

Commercial Projects: Suitable for use in offices, shops, and restaurants, our hinges offer strength and functionality for heavy-traffic areas.

Industrial Projects: Designed for use in warehouses, factories, and manufacturing facilities, our hinges provide sturdy support for heavy doors and equipment.

Get in Touch:

Upgrade your projects with our high-quality precision flat hinges at wholesale prices. Contact us today to discuss your requirements and explore how our hinges can enhance the functionality and durability of your applications.



Shenzhen Dongfeng Shengshi Hardware products Co., LTD



18682375931



905004489@qq.com



metalstamp-parts.com

Building 3, No.8 Zhenxing Road, Loucun Community, Xinhua Street, Guangming District, Shenzhen