



Customized ATM equipment hardware stamping riveting assembly parts

Our Product Introduction

Basic Information

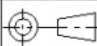
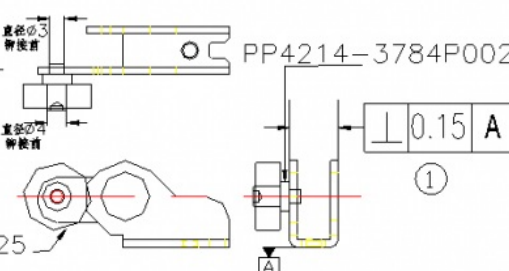
- Place of Origin: China
- Minimum Order Quantity: 1000
- Price: \$ +1~10+Pcs
- Delivery Time: 15-20
- Payment Terms: L/C, D/A, D/P, T/T, Western Union, MoneyGram
- Supply Ability: 3000+pcs+Month



Product Specification

- Product Name: ATM Machine Equipment Components
- Material: SECC
- Rivet Material: SUM22D
- Specifications: L33mm*W35.5mm*T1.6
- Working Procedure: Cutting Punching Forming Cleaning Riveting Packaging Shipping
- Highlight: **Electroplated Galvanized Sheet Metal Parts, ATM Equipment Sheet Metal Parts, ATM Galvanized Sheet Metal Parts**

Product Description

材质	主 体	配 件	单位	视图法	页次	加工人数	标准工时								
	SECC		mm		4\4	1人	30S/PCS								
料厚	T=1.6														
生产流程: 1/3下料→2/3冲孔→3/3成形→清洗→旋铆钉→全检包装															
简图:															
1. 铆钉PP4214-3784P002 1件															
2. 配件4LP-6410-25 1件															
<div><div><p>④ $\phi 3$ 铆钉铆接后 直径MAX$\phi 4.5$</p><p>⑤ 铆合后铆钉凸出量为: MAX0.5MM</p></div><div><p>② 直径MAX$\phi 5.5$</p><p>③ 铆合后铆钉凸出量为: MAX0.6MM</p><p>⑥ 轴承灵活性</p></div></div> <div></div>															
<table><tr><th colspan="2">参考数值</th></tr><tr><td>气压</td><td>5kg</td></tr><tr><td>保持时间</td><td>2秒</td></tr><tr><td>铆接头角度</td><td>5°</td></tr></table>								参考数值		气压	5kg	保持时间	2秒	铆接头角度	5°
参考数值															
气压	5kg														
保持时间	2秒														
铆接头角度	5°														



Product Name	ATM machine equipment components
Material	SECC
Rivet material	SUM22D
Specifications	L33mm*W35.5mm*T1.6
working procedure	Cutting punching forming cleaning riveting packaging shipping

About Us

Direct wholesale, self-produced and self sold



Shenzhen Dongfeng Shengshi Hardware products Co., LTD



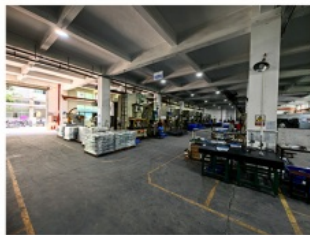
Company Profile



Shenzhen Dongfeng Shengshi Hardware Products Co., Ltd. was established in 2003 and is an ISO9001 certified factory. The company has been committed to the research and development, production and sales of hardware molds, ATM components, precision hinges, tapping parts, mechanical components, heat sinks, display hooks, and anti-theft series products. The company's main markets include North America, South America, Europe, Japan, Australia, and mainland China.

The company has complete equipment, mainly including: 48 large and small punches, 40 hand beer machines, 20 tapping machines, 25 drilling machines, 15 machining equipment, 6 lathes, 8 milling machines, 4 wire cutting machines, 5 precision grinders, CNC machining centers, spark machines, three production lines, and the quality management department's projectors, anemometer, hardness meters, altimeters, film thickness testers and other testing equipment.

The company adheres to the corporate tenet of "customer centeredness, quality as the foundation, continuous improvement and innovation, and continuous provision of high-quality products", constantly explores and strives to establish a good external image for the prosperous era of Dongfeng. We warmly welcome people from all walks of life to establish cooperative relationships with our company, work hand in hand, and create brilliance together!



Professional hardware accessory processing

Free redo if the drawing requirements are not met

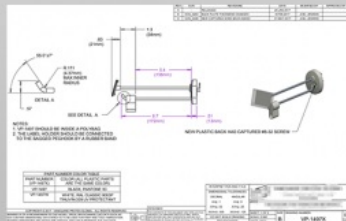
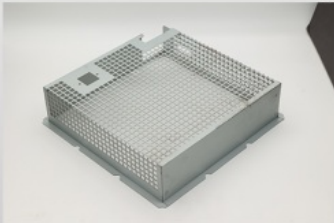
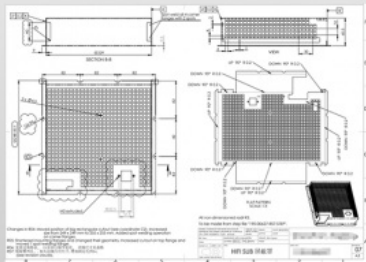
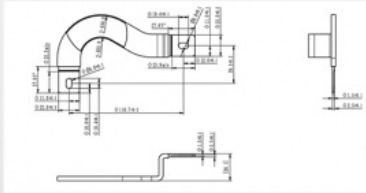
We guarantee production quality through standardized processes, innovate production, and specialize in non-standard processing. Our quality stan

Standards are determined by you!



Provide drawings or samples

Strictly follow the requirements for production

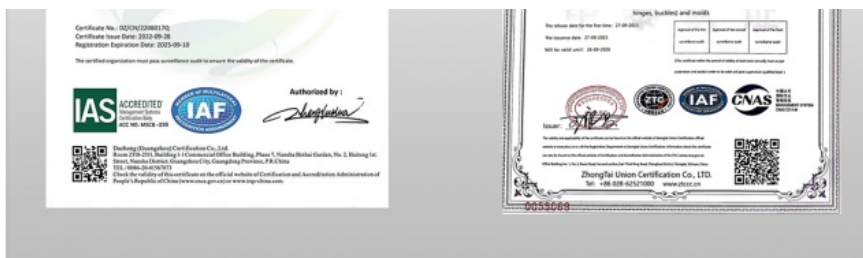


Qualification certificate

Qualification certification, quality assurance

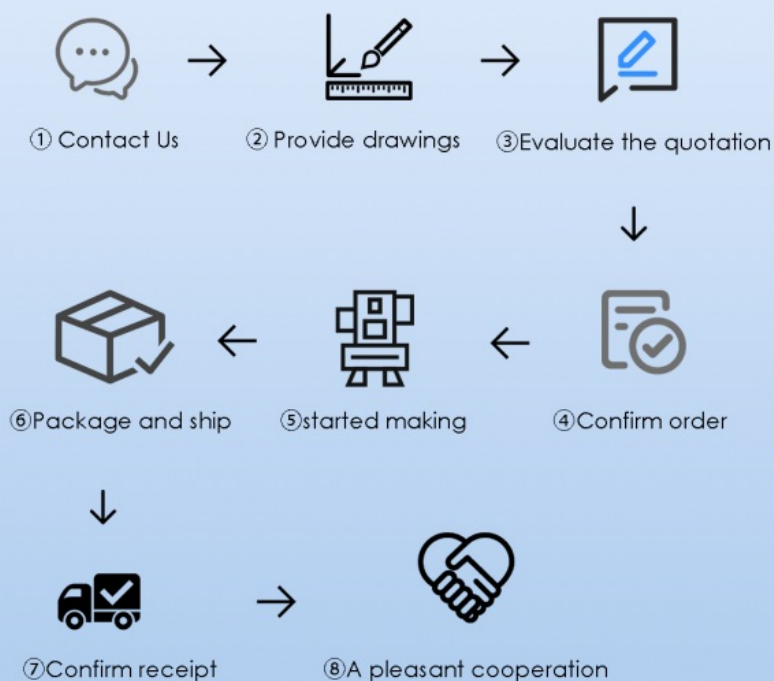
Complies with national testing standards, recognized quality and integrity, undergoes rigorous testing, allowing you to use with confidence





Machining Process

EXPERIENCE AND TECHNOLOGY OF
PRECIPITATION FOR YOU TO BRING PRODUCT PROTECTION



Factory



+ Factory supply

After sale



+ Multiple specifications

Examination



+ well stocked

Specifications



+ On time delivery

High quality



+ Integrity
management

Tailor-made



+ Support
customization

After sales instructions



1. Are you a factory?

A: Yes, we are a factory with 21 years of experience, dedicated to the research and development, production, and sales of hardware molds, ATM components, precision hinges, stamping parts, mechanical components, heat sinks, display hooks, and anti-theft series products. Our main markets include North America, South America, Europe, Japan, Australia, and mainland China

2. What about the lead time?

A: 15-30 working days for mass production.

3. Do you have any MOQ limit for

A: Low MOQ, 1pc for sample checking is available.

4. How do you ship the goods and how long does it take to arrive?

A: Ship by DHL, UPS, FedEx or TNT. It takes 3-5 days to arrive. Airline and sea shipping also optional.

5. How to proceed an order for?

- 1) Firstly let us know your requirements or application.
- 2) Secondly We quote according to your requirements or our suggestions.
- 3) Thirdly customer confirms the samples and places deposit for formal order.
- 4) Fourthly We arrange the production.

6. what to be clearly indicated when I send you drawing?

A: You are kindly requested to let us know the raw material, finish and quantity at least.

7. What if we are not completely satisfied with the parts we re-

7. What if we are not completely satisfied with the parts we re

A: We will replace any parts that you are not satisfied with free of charge. If we make a mistake, we will work with you to correct it.

■ Shenzhen Dongfeng Shengshi Hardware products Co., LTD ■



Shenzhen Dongfeng Shengshi Hardware products Co., LTD



18682375931



905004489@qq.com



metalstamp-parts.com

Building 3, No.8 Zhenxing Road, Loucun Community, Xihu Street, Guangming District, Shenzhen