



Stainless Steel Aluminum ATM Parts Hardware Stamping And Riveting Assembly Parts

Our Product Introduction

Basic Information

- Place of Origin: China
- Minimum Order Quantity: 1000
- Price: \$ +1~10+Pcs
- Delivery Time: 15-20
- Payment Terms: L/C, D/A, D/P, T/T, Western Union, MoneyGram
- Supply Ability: 3000+pcs+Month



Product Specification

- Material: SUS304-CP-2B
- Rivet Material: SUM22D
- Durability: High
- Size: Customized
- Usage: ATM Machines
- Precision: High
- Functionality: Ensures Smooth Operation Of ATM
- Working Procedure: Cutting, Bending, Tapping, Cleaning, Riveting, Full Inspection, Packaging And Shipping
- Highlight: **Aluminum ATM Parts, Stainless Steel ATM Parts , ATM Parts Hardware Stamping Riveting**

1/1、铆接

Technical drawing showing a riveted assembly. The drawing includes dimensions and part labels:

- Dimension: 19.55 ± 0.3
- Dimension: $\phi 4$
- Dimension: $\phi 3$
- Dimension: $\text{MAX} \phi 4.5$
- Surface texture symbol: $0.1 A$
- Surface texture symbol: A
- Part label: 铆钉1件 PP4241-1314P003
- Part label: 钣金1件 PP4216-3375P001



Shenzhen Dongfeng Shengshi Hardware products Co., LTD

About Us

Direct wholesale, self-produced and self sold



Shenzhen Dongfeng Shengshi Hardware products Co., LTD



Company Profile

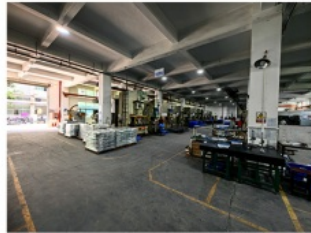


Shenzhen Dongfeng Shengshi Hardware Products Co., Ltd. was established in 2003 and is an ISO9001 certified factory. The company has been committed to the research and development, production and sales of hardware molds, ATM components, precision hinges, tam

ping parts, mechanical components, heat sinks, display hooks, and anti-theft series products. The company's main markets include North America, South America, Europe, Japan, Australia, and mainland China.

The company has complete equipment, mainly including: 48 large and small punches, 40 hand beer machines, 20 tapping machines, 25 drilling machines, 15 machining equipment, 6 lathes, 8 milling machines, 4 wire cutting machines, 5 precision grinders, CNC machining centers, spark machines, three production lines, and the quality management department's projectors, anemometer, hardness meters, altimeters, film thickness testers and other testing equipment.

The company adheres to the corporate tenet of "customer centeredness, quality as the foundation, continuous improvement and innovation, and continuous provision of high-quality products", constantly explores and strives to establish a good external image for the prosperous era of Dongfeng. We warmly welcome people from all walks of life to establish cooperative relationships with our company, work hand in hand, and create brilliance together!



Professional hardware accessory processing

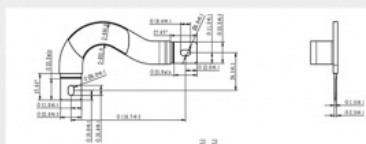
Free redo if the drawing requirements are not met

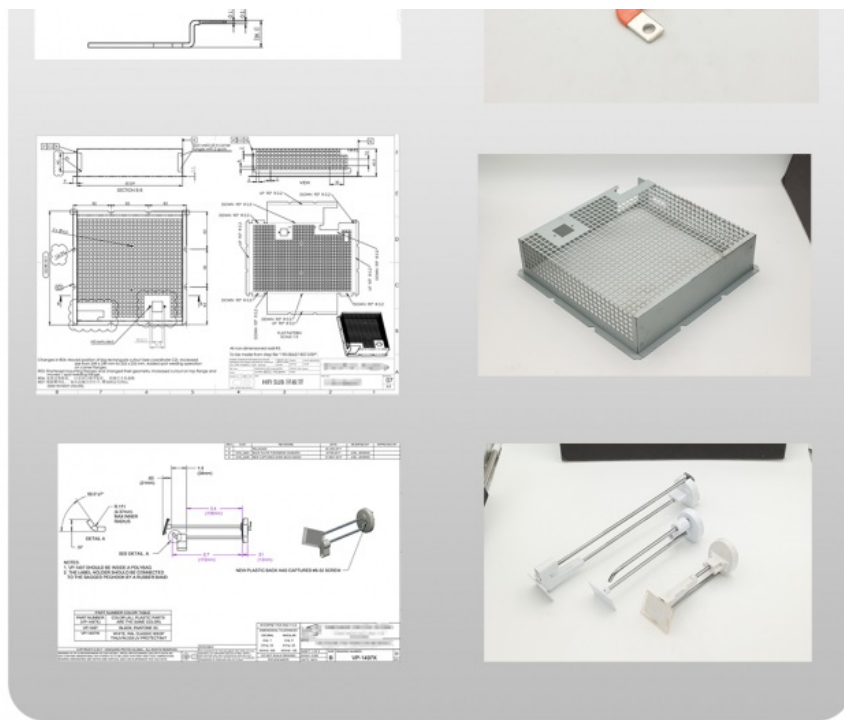
We guarantee production quality through standardized processes, innovate production, and specialize in non-standard processing. Our quality standards are determined by you!



Provide drawings or samples

Strictly follow the requirements for production





Qualificaation certificate

Qualification certification, quality assurance

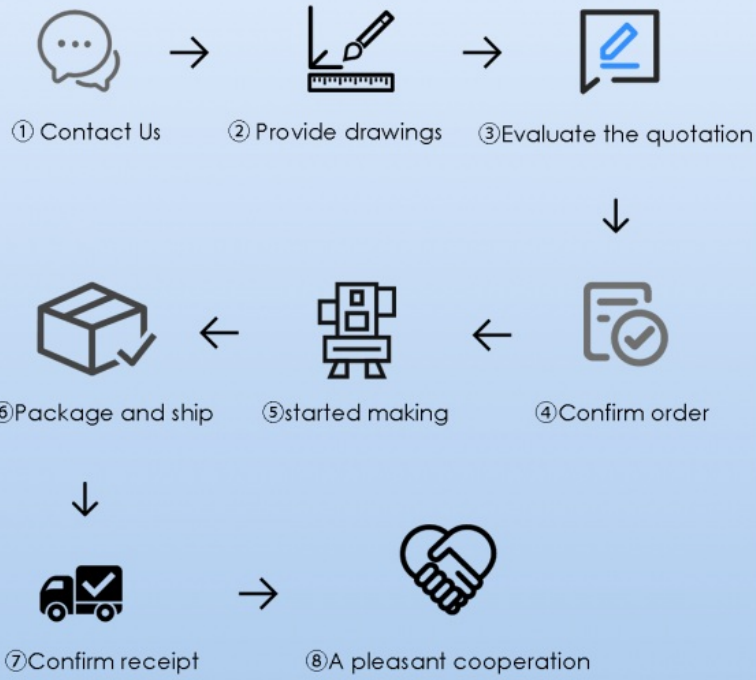
Complies with national testing standards, recognized
quality and integrity, undergoes rigorous testing, allowing you to use with confidence



Machining Process

EXPERIENCE AND TECHNOLOGY OF

PRECIPITATION FOR YOU TO BRING PROOUCT PROTECTION



Factory



+ Factory supply

After sale



+ Multiple specifications

Examination



+ well stocked

Specifications



+ On time delivery

High quality



+ Integrity management

Tailor-made



+ Support customization

After sales instructions



1. Are you a factory?

A: Yes, we are a factory with 21 years of experience, dedicated to the research and development, production, and sales of hardware molds, ATM components, precision hinges, stamping parts, mechanical components, heat sinks, display hooks, and anti-theft series products. Our main markets include North America, South America, Europe, Japan, Australia, and mainland China

2. What about the lead time?

A: 15-30 working days for mass production.

3. Do you have any MOQ limit for

A: Low MOQ, 1pc for sample checking is available.

4. How do you ship the goods and how long does it take to arrive?

A: Ship by DHL, UPS, FedEx or TNT. It takes 3-5 days to arrive. Airline and sea shipping also optional.

5. How to proceed an order for?

- 1) Firstly let us know your requirements or application.
- 2) Secondly We quote according to your requirements or our suggestions.
- 3) Thirdly customer confirms the samples and places deposit for formal order.
- 4) Fourthly We arrange the production.

6. what to be clearly indicated when I send you drawing?

A: You are kindly requested to let us know the raw material, finish and quantity at least.

7: What if we are not completely satisfied with the parts we re-

A: We will replace any parts that you are not satisfied with free of charge. If we make a mistake, we will work with you to correct it.

■ Shenzhen Dongfeng Shengshi Hardware products Co., LTD ■

| Item | Description |
|------|-------------|
|------|-------------|

| | |
|--------------------------|--|
| Product Name | Stainless Steel Aluminum ATM Parts Hardware Stamping And Riveting Assembly Parts |
| Working Process | Blanking, stamping, Punching, deep drawing, bending, Coining, Curling,Forming, threading,welding, tapping, riveting, cnc machining, CNC Milling |
| Material | carbon steel, Stainless steel Aluminum, copper, brass, bronze (according to customer's requirements) |
| Surface Treatment | Galvanized, Zinc, nickel, chrome-plated, Powder Coating, Polishing, Spraying, Anodizing, Pickling, E-coating, etc. |
| Packing | Inner-Plastic Bag; Outer -Standard Carton Box + Pallet/Wood Case |
| Application | Automobiles, Construction, Transportation, Furniture, machinery, home appliance, electronic & electric appliance, Agricultural Equipments |
| Equipments | stamping/punching machine, CNC bending machine, CNC Laser cutting machine, 5-250T punching machines, Welding Manapulator |
| Thickness | 0.5mm~12mm |
| File Format | Solidworks,Pro/Engineer,Auto CAD,PDF,JPG |
| Service | Warm and quick response service provided by the professional Export Sales Team with many years' experience in handling exports to the US, Europe, Japan and other countries and regions. |
| Inspection | 100% QC as to each products |

Stainless Steel ATM Parts:

Material Selection: Offer various grades of stainless steel, such as 304 or 316, depending on the specific requirements for durability, corrosion resistance, and aesthetics.

Surface Finishes: Provide options for surface finishes, including brushed, polished, or powder-coated, to enhance appearance and resistance to environmental factors.

Component Types: Include a range of stainless steel components such as fascias, keypads, card readers, and cash dispenser parts, each designed for durability and security in ATM systems.

Custom Logos and Branding: Offer customization options for engraving or etching company logos, branding, or serial numbers onto stainless steel components to enhance brand identity and security.

Aluminum ATM Parts:

Material Properties: Highlight the lightweight yet robust nature of aluminum, making it suitable for various ATM components while also offering excellent corrosion resistance.

Anodized Finishes: Offer anodized aluminum finishes in different colors for improved aesthetics, corrosion resistance, and durability.

Thermal Conductivity: Emphasize the high thermal conductivity of aluminum, making it suitable for components requiring efficient heat dissipation, such as electronic enclosures or cooling fins.

Custom Machining and Fabrication: Provide custom machining and fabrication services to create intricate aluminum components with precise tolerances and complex geometries.

Hardware Stamping and Riveting Assembly:

Stamping Capabilities: Highlight the capability to produce stamped components with high precision and efficiency, allowing for the mass production of intricate parts.

Riveting Techniques: Explain the use of various riveting techniques, including solid rivets, blind rivets, or self-piercing rivets, to securely join components together in ATM assemblies.

Assembly Processes: Detail the assembly processes involved in hardware stamping and riveting, ensuring that components are correctly aligned, joined, and secured to meet performance and safety standards.

Quality Assurance: Outline quality assurance procedures, such as dimensional inspection, torque testing, and vibration testing, to verify the integrity and reliability of assembled components.



Shenzhen Dongfeng Shengshi Hardware products Co., LTD



18682375931



905004489@qq.com



metalstamp-parts.com

Building 3, No.8 Zhenxing Road, Loucun Community, Xinhua Street, Guangming District, Shenzhen