

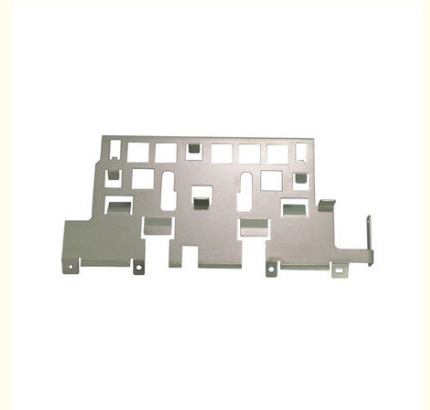


## Nickel Plated Hardware Stamping Parts Bending Parts Of The ATM Machine

Our Product Introduction

### Basic Information

- Place of Origin: China
- Minimum Order Quantity: 1000
- Price: \$ +1~10+Pcs
- Delivery Time: 15-20
- Payment Terms: L/C, D/A, D/P, T/T, Western Union, MoneyGram
- Supply Ability: 3000+pcs+Month



### Product Specification

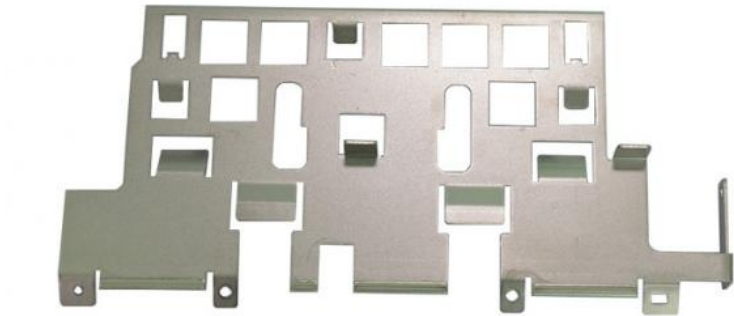
- Material: SPCC-SD
- Specifications: W186.9mm\*L90.07mm\*T1.0
- Usage: ATM Equipment, Mechanical Equipment, Etc
- Surface Treatment: Electroplating Chemical Nickel Deposition
- Working Process: Cutting, Punching, Folding, Forming, Punching, Electroplating, Full Inspection, Packaging And Shipping
- Highlight: **Nickel Plated Hardware Stamping Parts, Bending Parts Of The ATM Machine, Stamping Parts Of The ATM Machine**

for more products please visit us on [metalstamp-parts.com](http://metalstamp-parts.com)

Product Description

Our Product Introduction

for more products please visit us on [metalstamp-parts.com](http://metalstamp-parts.com)



specifications	W186.9mm*L90.07mm*T1.0
Material	SPCC-SD
Usage	ATM equipment, mechanical equipment, etc
Surface Treatment	Electroplating chemical nickel deposition
working procedure	Cutting, punching, folding, forming, punching, electroplating, full inspection, packaging and shipping

# About Us

Direct wholesale, self-produced and self sold



Shenzhen Dongfeng Shengshi Hardware products Co., LTD



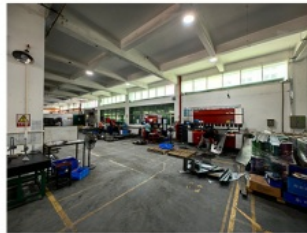
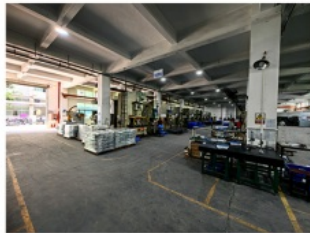
Company Profile



Shenzhen Dongfeng Shengshi Hardware Products Co., Ltd. was established in 2003 and is an ISO9001 certified factory. The company has been committed to the research and development, production and sales of hardware molds, ATM components, precision hinges, tapping parts, mechanical components, heat sinks, display hooks, and anti-theft series products. The company's main markets include North America, South America, Europe, Japan, Australia, and mainland China.

The company has complete equipment, mainly including: 48 large and small punches, 40 hand beer machines, 20 tapping machines, 25 drilling machines, 15 machining equipment, 6 lathes, 8 milling machines, 4 wire cutting machines, 5 precision grinders, CNC machining centers, spark machines, three production lines, and the quality management department's projectors, anemometer/cubic, hardness meters, altimeters, film thickness testers and other testing equipment.

The company adheres to the corporate tenet of "customer centeredness, quality as the foundation, continuous improvement and innovation, and continuous provision of high-quality products", constantly explores and strives to establish a good external image for the prosperous era of Dongfeng. We warmly welcome people from all walks of life to establish cooperative relationships with our company, work hand in hand, and create brilliance together!



Professional hardware accessory processing

**Free redo** if the drawing requirements are not met

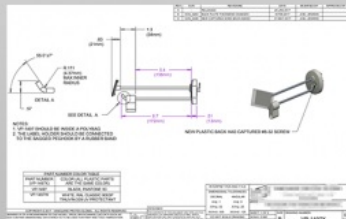
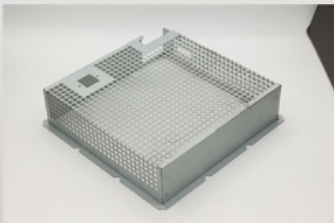
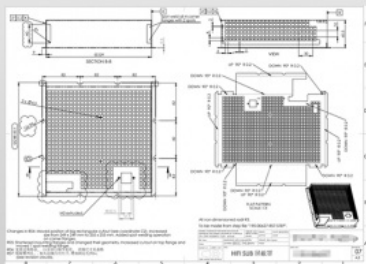
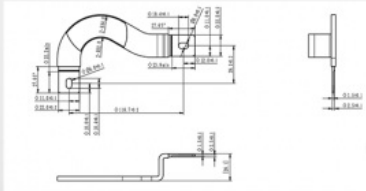
We guarantee production quality through standardized processes, innovate production, and specialize in non-standard processing. Our quality stan

dards are determined by you!



Provide drawings or samples

**Strictly follow** the requirements for production



## Qualification certificate

### Qualification certification, quality assurance

Complies with national testing standards, recognized  
quality and integrity, undergoes rigorous testing, allowing you to use with confidence

**CERTIFICATE**



Herewith Grants To:

**Shenzhen City Dong Feng Saatchi Metal Products Co., Ltd.**  
Organization Credit Code: 914403007913403030  
185, Building 3, Industrial Zone of Yang An Hong, Guangming Road, Yantouan Community,  
Yantouan Street, Baoan District, Shenzhen City, Guangdong Province, P.R. China  
Has been assessed and found to be in accordance with the requirements of standard  
GB/T 19001-2016/ISO 9001:2015

Scope:  
The Manufacture of Hardware Products Comprising of Metal Punched  
Components, ATM Components, Hinges Printer Copier Components,

**ZTC**  
中泰认证

**QUALITY MANAGEMENT SYSTEM CERTIFICATION**

Registration NO.: 201610210022-00005

**Shenzhen Dongfeng Shengshi Hardware Products Co., Ltd.**

Unified social credit code 914403007913403030

Registered Address: Zone A, 1st Floor, 2nd Floor, Building 3, No. 8, Zhenming Road,

Yantouan Community, Xixiu Street, Guangming District, Shenzhen

Office Address: Zone A, 1st Floor, 2nd Floor, Building 3, No. 8, Zhenming Road,

Low Village Community, Xixiu Street, Guangming District, Shenzhen City,

Guangdong Province

Production Address: Zone A, 1st Floor, 2nd Floor, Building 3, No. 8, Zhenming Road,

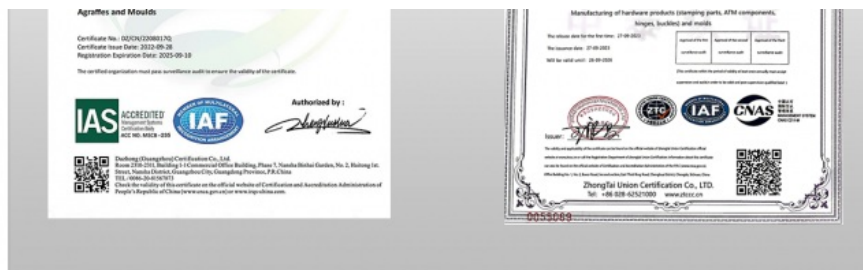
Low Village Community, Xixiu Street, Guangming District, Shenzhen City,

Guangdong Province

Established Quality Management System Accord With

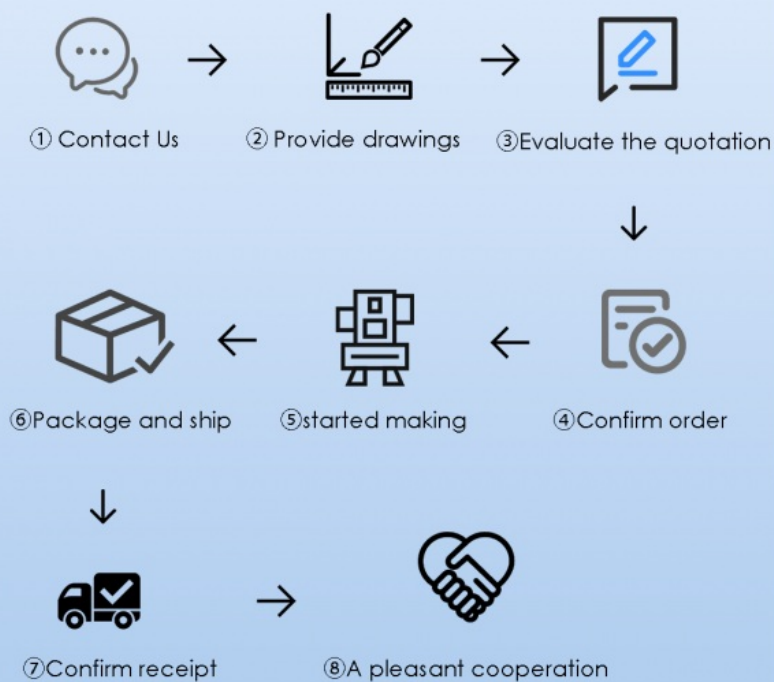
GB/T 19001-2016/ISO 9001:2015 standard

Through the certification scope is as follows:



## Machining Process

EXPERIENCE AND TECHNOLOGY OF  
PRECIPITATION FOR YOU TO BRING PRODUCT PROTECTION



Factory



+ Factory supply

After sale



+ Multiple specifications

Examination



+ well stocked

Specifications



+ On time delivery

High quality



+ Integrity  
management

Tailor-made



+ Support  
customization

After sales instructions



### 1. Are you a factory?

A: Yes, we are a factory with 21 years of experience, dedicated to the research and development, production, and sales of hardware molds, ATM components, precision hinges, stamping parts, mechanical components, heat sinks, display hooks, and anti-theft series products. Our main markets include North America, South America, Europe, Japan, Australia, and mainland China

### 2. What about the lead time?

A: 15-30 working days for mass production.

### 3. Do you have any MOQ limit for

A: Low MOQ, 1pc for sample checking is available.

### 4. How do you ship the goods and how long does it take to arrive?

A: Ship by DHL, UPS, FedEx or TNT. It takes 3-5 days to arrive. Airline and sea shipping also optional.

### 5. How to proceed an order for?

- 1) Firstly let us know your requirements or application.
- 2) Secondly We quote according to your requirements or our suggestions.
- 3) Thirdly customer confirms the samples and places deposit for formal order.
- 4) Fourthly We arrange the production.

### 6. what to be clearly indicated when I send you drawing?

A: You are kindly requested to let us know the raw material, finish and quantity at least.

7: What if we are not completely satisfied with the parts we re-

A: We will replace any parts that you are not satisfied with free of charge. If we make a mistake, we will work with you to correct it.

■ Shenzhen Dongfeng Shengshi Hardware products Co., LTD ■



**Shenzhen Dongfeng Shengshi Hardware products Co., LTD**



18682375931



905004489@qq.com



metalstamp-parts.com

Building 3, No.8 Zhenxing Road, Loucun Community, Xihu Street, Guangming District, Shenzhen