



Purple copper T2-M metal stamping front-end output copper bar component

Our Product Introduction

for more products please visit us on metalstamp-parts.com

Basic Information

- Place of Origin: China
- Minimum Order Quantity: 1000
- Price: \$ +1~10+Pcs
- Delivery Time: 15-20
- Payment Terms: L/C, D/A, D/P, T/T, Western Union, MoneyGram
- Supply Ability: 3000+pcs+Month



Product Specification

- Product Name: Front End Output Bronze Medal
- Material: Purple Copper/T2-M
- Specifications: L=70.1MM,W=44.2MM,H=42.55MM
- Material Thickness: T=3.0mm
- Surface Technology: Grind
- Application: Automotive, Electronics, Machinery, Etc.
- Working Procedure: Cutting - V Curve - Grinding - Full Inspection - Packaging And Shipping
- Highlight: **Customized CNC Machining Parts,
New Energy Vehicle Machining Parts,
Vehicle Fiber Laser Cutting Parts**



Our Product Introduction

for more products please visit us on metalstamp-parts.com

落料图

- 技术要求:
 1. 本零部件遵从能源产品相关标准;
 2. 去除毛刺、锋刃边、清除油污;
 3. 未注尺寸参照3D模型;
 4. 铜焊焊接受用电磁脉冲技术(EMPT),最小破坏压力值为3000N
 5. 未注尺寸公差按照(KNDA045000040铝合金冲压件质量要求) N级精度要求;
 6. 产品满足72小时盐雾测试表面无不良现象
 7. 两端面垂直度小于0.05mm,对焊接焊片,5N扭力矩焊接后,测试接触电阻小于0.04m Ω
 8. 要求载流值为20A,在环境25度,风速1-2m/s环境下,连续工作1小时,温升不超过20度
 9. 云母胶带包裹后表面平整,无起皱,无破损等不良,包裹云母胶带后,两端热熔管齐
 9. 热熔管, EVA, 橙色;

工艺流程图(2) (翻样, 加工, 装配)

Product Name	Front end output bronze medal
Material	Purple copper/T2-M
specifications	L=70.1MM,W=44.2MM,H=42.55MM
Material thickness	T=3.0mm
Surface technology	grind
Usage	ATM equipment components
Application	Automotive, Electronics, Machinery, etc.
working procedure	Cutting - V Curve - Grinding - Full Inspection - Packaging and Shipping

Shenzhen Dongfeng Shengshi Hardware products Co., LTD

About Us

Direct wholesale, self-produced and self sold



Shenzhen Dongfeng Shengshi Hardware products Co., LTD



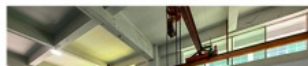
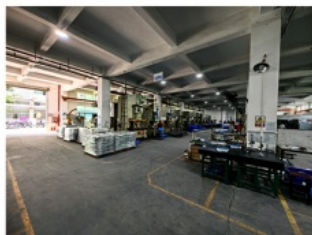
Company Profile



Shenzhen Dongfeng Shengshi Hardware Products Co., Ltd. was established in 2003 and is an IOS9001 certified factory. The company has been committed to the research and development, production and sales of hardware molds, ATM components, precision hinges, tampering parts, mechanical components, heat sinks, display hooks, and anti-theft series products. The company's main markets include North America, South America, Europe, Japan, Australia, and mainland China.

The company has complete equipment, mainly including: 48 large and small punches, 40 hand beer machines, 20 tapping machines, 25 drilling machines, 15 machining equipment, 6 lathes, 8 milling machines, 4 wire cutting machines, 5 precision grinders, CNC machining centers, spark machines, three production lines, and the quality management department's projectors, anime/cubic, hardness meters, altimeters, film thickness testers and other testing equipment.

The company adheres to the corporate tenet of "customer centeredness, quality as the foundation, continuous improvement and innovation, and continuous provision of high-quality products", constantly explores and strives to establish a good external image for the prosperous era of Dongfeng. We warmly welcome people from all walks of life to establish cooperative relationships with our company, work hand in hand, and create brilliance together!





Professional hardware accessory processing

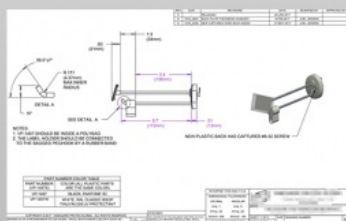
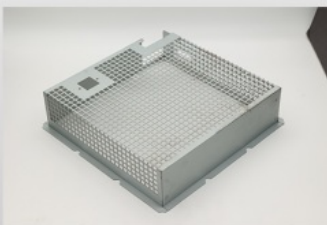
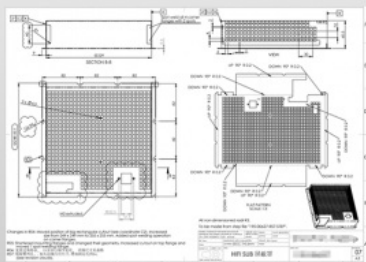
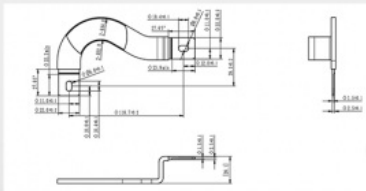
Free redo if the drawing requirements are not met

We guarantee production quality through standardized processes, innovate production, and specialize in non-standard processing. Our quality standards are determined by you!



Provide drawings or samples

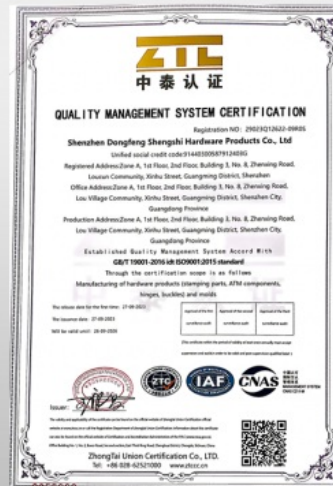
Strictly follow the requirements for production



Qualificaation certificate

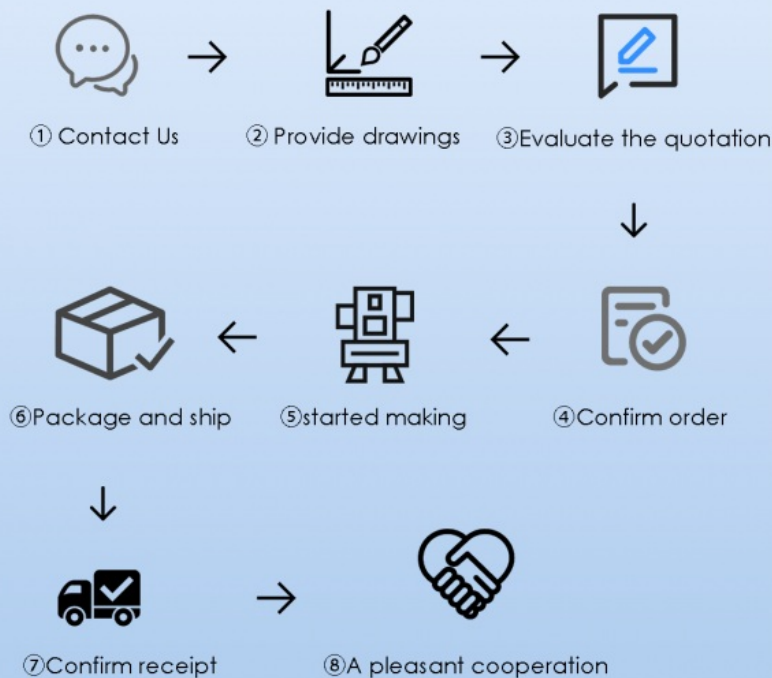
Qualification certification, quality assurance

Complies with national testing standards, recognized quality and integrity, undergoes rigorous testing, allowing you to use with confidence



Machining Process

EXPERIENCE AND TECHNOLOGY OF
PRECIPITATION FOR YOU TO BRING PRODUCT PROTECTION



Factory



+ Factory supply

After sale



+ Multiple specifications

Examination



+ well stocked

Specifications



+ On time delivery

High quality



+ Integrity management

Tailor-made



+ Support customization

After sales instructions



1. Are you a factory?

A: Yes, we are a factory with 21 years of experience, dedicated to the research and development, production, and sales of hardware molds, ATM components, precision hinges, stamping parts, mechanical components, heat sinks, display hooks, and anti-theft series products. Our main markets include North America, South America, Europe, Japan, Australia, and mainland China

2. What about the lead time?

A: 15-30 working days for mass production.

3. Do you have any MOQ limit for

A: Low MOQ, 1pc for sample checking is available.

4. How do you ship the goods and how long does it take to arrive?

A: Ship by DHL, UPS, FedEx or TNT. It takes 3-5 days to arrive. Airline and sea shipping

the stamping of any other material. It takes 3 days to enter forms and sea shipping also optional.

5. How to proceed an order for?

- 1) Firstly let us know your requirements or application.
- 2) Secondly We quote according to your requirements or our suggestions.
- 3) Thirdly customer confirms the samples and places deposit for formal order.
- 4) Fourthly We arrange the production.

6. what to be clearly indicated when I send you drawing?

A: You are kindly requested to let us know the raw material, finish and quantity at least.

7: What if we are not completely satisfied with the parts we re-

A: We will replace any parts that you are not satisfied with free of charge. If we make a mistake, we will work with you to correct it.

■ Shenzhen Dongfeng Shengshi Hardware products Co., LTD ■



Shenzhen Dongfeng Shengshi Hardware products Co., LTD



18682375931



905004489@qq.com



metalstamp-parts.com

Building 3, No.8 Zhenxing Road, Loucun Community, Xinhua Street, Guangming District, Shenzhen