



Metal stamping, purple copper material grinding process, connecting copper aluminum composite row components

Basic Information

- Place of Origin: China
- Minimum Order Quantity: 1000
- Price: \$ +1~10+Pcs
- Delivery Time: 15-20
- Payment Terms: L/C, D/A, D/P, T/T, Western Union, MoneyGram
- Supply Ability: 3000+pcs+Month



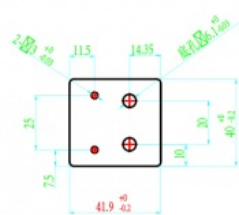
Product Specification

- Product Name: Connecting Copper Aluminum Composite Bars
- Specifications: L41.9mm*W40mm*T2.0
- Product Name 1: Copper Bar
- Specifications 1: L86mm*W20mm*T2.0
- Material: Purple CopperT2-Y2、 T2-M
- Tolerance: $\pm 0.01\text{mm}$
- Application: Automotive, Electronics, Machinery, Etc.
- Working Procedure: Cutting, Grinding, Full Inspection, Packaging And Shipping
- Highlight: **0.5mm copper stamping parts,
0.5mm sheet metal stamping parts,
10mm copper stamping parts**

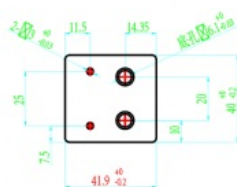
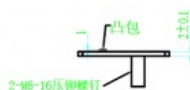


Our Product Introduction

铜排 T=2mm
落料图



1. 材料: 合金1060, 表面无6%化学氧化; 铜: T2-2, 表面镀银, 镀层厚度 $\geq 12\mu\text{m}$, 镀层耐温 200°C 以上不能起皮、起泡;
2. 铜钎焊须采用电磁脉冲技术(EMP), 最小破坏剥离力大于3000N;
3. 产品表面无氧化, 整洁无脏污, 去毛刺;
4. 产品满足72小时盐雾测试表面无不良现象;
5. 两端侧直流内阻小于 0.05Ω ;
6. 要求载流强度为280A, 在环境温度 25°C , 风速 2m/s , 连续工作1小时, 温升不超过 20°C ;
7. 螺钉铆接后扭力需大于 $11.3\text{N}\cdot\text{m}$;
8. 本零部件须从能源产品相关标准



工艺流程(加工顺序, 从左到右, 从上到下)

| | | | | | |
|-----|------|-------|------|------|------|
| 工序名 | 翻砂造型 | 翻砂造型 | 翻砂造型 | 翻砂造型 | 翻砂造型 |
| 备注 | | 有底壳支撑 | 上盖壳 | 底座 | 底座 |
| 工序号 | 翻砂造型 | 翻砂造型 | 翻砂造型 | 翻砂造型 | 翻砂造型 |
| 备注 | 翻砂造型 | 翻砂造型 | 翻砂造型 | 翻砂造型 | 翻砂造型 |

2-M6-16压铆螺钉

凸包

2±0.1

11.5^{+0.03}_{-0.03}

14.35^{+0.03}_{-0.03}

30^{+0.03}_{-0.03}

20^{+0.03}_{-0.03}

7.5^{+0.03}_{-0.03}

41.9^{+0.03}_{-0.03}

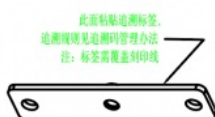
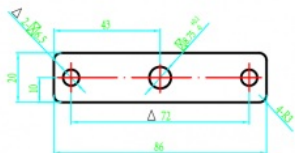
底孔 $\phi 8.0^{+0.03}_{-0.03}$

铜巴焊接区域面
镀层厚度均匀

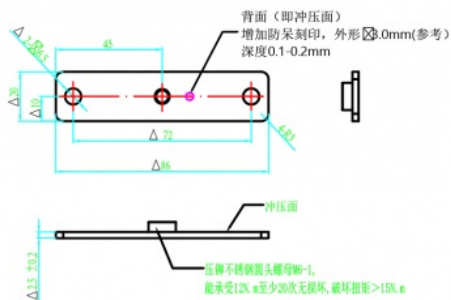
| | | | | | |
|---|----|-----------------------------|----|--------|--|
| 4 | | | | | |
| 3 | | | | | |
| 2 | | | | | |
| 1 | 钢板 | Φ42.5(+0.0/-0.2)*72.0*Φ43塑料 | 29 | 紫铜T2-M | |

| | | |
|----|---------|----|
| 名称 | 连接铜铝复合棒 | 校对 |
| 制图 | | 标准 |
| 工艺 | | 批准 |
| 审核 | | |

落料图



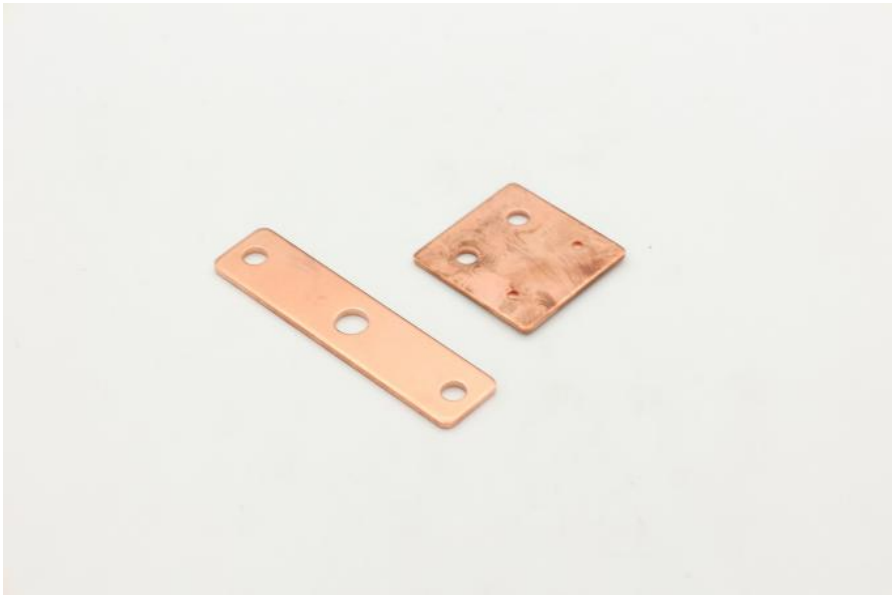
此面粘貼追溯標籤。
追溯規則見追溯碼管理辦法
注：標籤需覆蓋雷射印線



| | | | | | | | | |
|---|------|---------------------------|----|---------|----|----|----|----|
| 4 | | | | | 名称 | 单位 | 数量 | 备注 |
| 3 | | | | | 数量 | | 单位 | |
| 2 | 压铆螺母 | 圆头, M6-1, 1pcs | | 不锈钢 | 工艺 | | 标准 | |
| 1 | 钢板 | 994(±0.6/±0.2)×T2.5±P23.8 | 37 | 紫铜T2-12 | 数量 | | 标准 | |



for more products please visit us on metalstamp-parts.com



| | | | |
|-------------------|--|---|--|
| Product Name | | Connecting copper aluminum composite bars | |
| Specifications | | L41.9mm*W40mm*T2.0 | |
| By product name | | Copper bar | |
| By Specifications | | L86mm*W20mm*T2.0 | |
| Material | | Purple copperT2-Y2,T2-M | |
| Tolerance | | ±0.01mm | |
| Application | Automotive, Electronics, Machinery, etc. | working procedure | Cutting, Grinding, Full Inspection, Packaging and Shipping |

■ Shenzhen Dongfeng Shengshi Hardware products Co., LTD ■

About Us

Direct wholesale, self-produced and self sold



Shenzhen Dongfeng Shengshi Hardware products Co., LTD



Company Profile



Shenzhen Dongfeng Shengshi Hardware Products Co., Ltd. was established in 2003 and is an IOS9001 certified factory.The company has been committed to the research and development, production and sales of hardware molds, ATM components, precision hinges, tapping parts,mechanical components, heat sinks, display hooks, and anti-theft series products.The company's main markets include North America, South America, Europe,japan, Australia,and mainland China.

The company has complete equipment, mainly including: 48 large and small punches, 40 hand beer machines, 20 tapping machines, 25 drilling machines, 15 machining equipment, 6 lathes, 8 milling machines, 4 wire cutting machines, 5 precision grinders, CNC machining centers, spark machines, three production lines, and the quality management department's projectors, anemometer/cubic, hardness meters, altimeters, film thickness testers and other testing equipment.

The company adheres to the corporate tenet of "customer centeredness, quality as the foundation, continuous improvement and innovation, and continuous provision of high-quality products", constantly explores and strives to establish a good external image for the prosperous era of Dongfeng. We warmly welcome people from all walks of life to establish cooperative relationships with our company, work hand in hand, and create brilliance together!



Professional hardware accessory processing

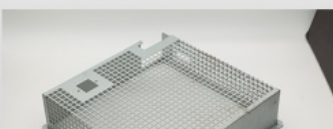
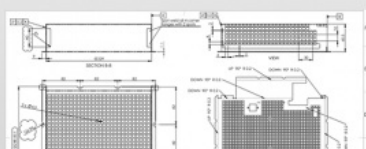
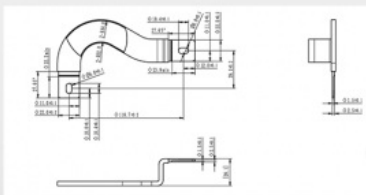
Free redo if the drawing requirements are not met

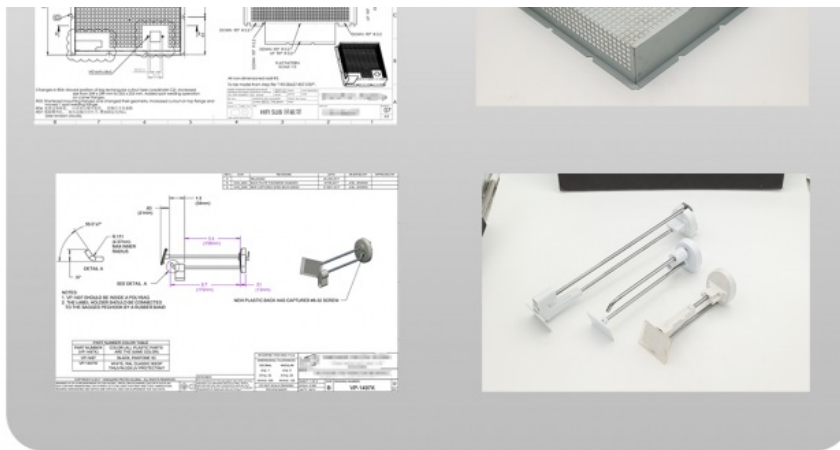
We guarantee production quality through standardized processes, innovate production, and specialize in non-standard processing. Our quality standards are determined by you!



Provide drawings or samples

Strictly follow the requirements for production





Qualificaaton certificate

Qualification certification, quality assurance

Complies with national testing standards, recognized quality and integrity, undergoes rigorous testing, allowing you to use with confidence



Machining Process

EXPERIENCE AND TECHNOLOGY OF
PRECIPITATION FOR YOU TO BRING PROOCT PROTECTION



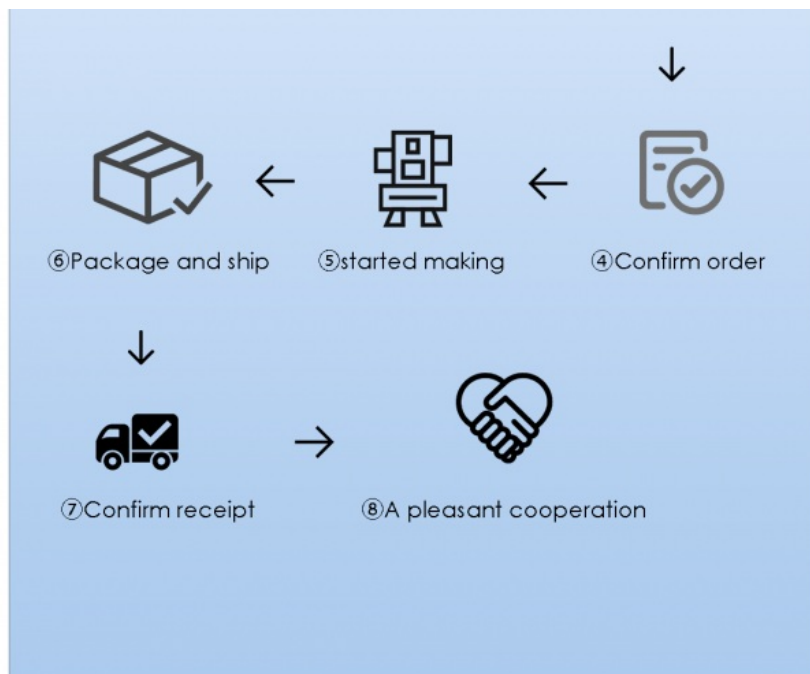
① Contact Us




② Provide drawings

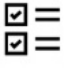


③ Evaluate the quotation




Factory



+ Factory supply

After sale



+ Multiple specifications

Examination



+ well stocked

Specifications


+ On time delivery


High quality


+ Integrity management

Tailor-made


+ Support customization

After sales instructions



1. Are you a factory?

A: Yes, we are a factory with 21 years of experience, dedicated to the research and development, production, and sales of hardware molds, ATM components, precision hinges, stamping parts, mechanical components, heat sinks, display hooks, and anti-theft series products. Our main markets include North America, South America, Europe, Japan, Australia, and mainland China

2. What about the lead time?

A: 15-30 working days for mass production.

3. Do you have any MOQ limit for

A: Low MOQ, 1pc for sample checking is available.

4. How do you ship the goods and how long does it take to arrive?

A: Ship by DHL, UPS, FedEx or TNT. It takes 3-5 days to arrive. Airline and sea shipping also optional.

5. How to proceed an order for?

- 1) Firstly let us know your requirements or application.
- 2) Secondly We quote according to your requirements or our suggestions.
- 3) Thirdly customer confirms the samples and places deposit for formal order.
- 4) Fourthly We arrange the production.

6. what to be clearly indicated when I send you drawing?

A: You are kindly requested to let us know the raw material, finish and quantity at least.

7: What if we are not completely satisfied with the parts we re-

A: We will replace any parts that you are not satisfied with free of charge. If we make a mistake, we will work with you to correct it.

Shenzhen Dongfeng Shengshi Hardware products Co., LTD



Shenzhen Dongfeng Shengshi Hardware products Co., LTD



18682375931



905004489@qq.com



metalstamp-parts.com

Building 3, No.8 Zhenxing Road, Loucun Community, Xinhua Street, Guangming District, Shenzhen