



## Fixing Precision Copper Stamping Parts And Metal Bending Parts

Our Product Introduction

for more products please visit us on [metalstamp-parts.com](http://metalstamp-parts.com)

### Basic Information

- Place of Origin: China
- Minimum Order Quantity: 1000
- Price: \$ +1~10+Pcs
- Delivery Time: 15-20
- Payment Terms: L/C, D/A, D/P, T/T, Western Union, MoneyGram
- Supply Ability: 3000+pcs+Month



### Product Specification

- Features: Lightweight, High Strength, Corrosion Resistance
- Application: Automotive, Electronics, Machinery, Etc.
- Thickness: 0.5mm-10mm
- Usage: Assembly, Fixing, Connecting
- Technology: CNC
- Material: Red Copper
- Surface Treatment: Burnishing
- Tolerance:  $\pm 0.01\text{mm}$
- Highlight: precision copper stamping parts, precision metal bending parts, 10mm metal bending parts



### More Images



Shenzhen Dongfeng Shengshi Hardware products Co., LTD



Choose us

Combining affordability and quality

  
Original price sales

  
Multiple specifications

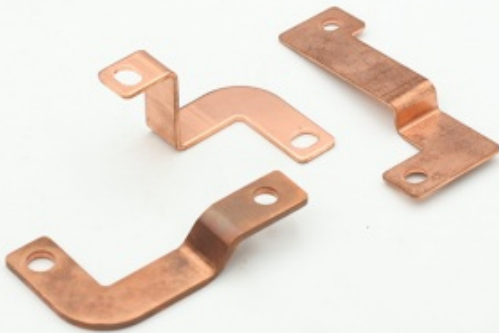
  
Sufficient raw materials

  
Fast processing

  
Exquisite craftsmanship

  
Invoicable

Material: red copper  
technology: CNC  
Surface Treatment: burnishing



Material red copper

Delivery time 20days

Price \$1~10/pcs

technology CNC

Surface Treatment burnishing

Packing 12 in a box

# About Us

Direct wholesale, self-produced and self sold



Shenzhen Dongfeng Shengshi Hardware products Co., LTD



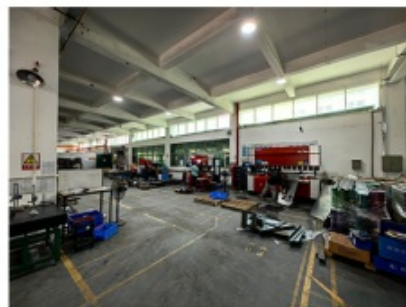
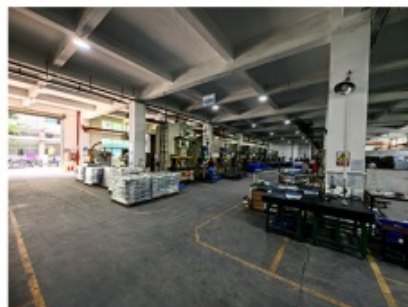
Company Profile



Shenzhen Dongfeng Shengshi Hardware Products Co., Ltd. was established in 2003 and is an IOS9001 certified factory. The company has been committed to the research and development, production and sales of hardware molds, ATM components, precision hinges, tapping parts, mechanical components, heat sinks, display hooks, and anti-theft series products. The company's main markets include North America, South America, Europe, Japan, Australia, and mainland China.

The company has complete equipment, mainly including: 48 large and small punches, 40 hand beer machines, 20 tapping machines, 25 drilling machines, 15 machining equipment, 6 lathes, 8 milling machines, 4 wire cutting machines, 5 precision grinders, CNC machining centers, spark machines, three production lines, and the quality management department's projectors, anime/cubic, hardness meters, altimeters, film thickness testers and other testing equipment.

The company adheres to the corporate tenet of "customer centeredness, quality as the foundation, continuous improvement and innovation, and continuous provision of high-quality products", constantly explores and strives to establish a good external image for the prosperous era of Dongfeng. We warmly welcome people from all walks of life to establish cooperative relationships with our company, work hand in hand, and create brilliance together!





After sales instructions



### 1. Are you a factory?

A: Yes, we are a factory with 21 years of experience, dedicated to the research and development, production, and sales of hardware molds, ATM components, precision hinges, stamping parts, mechanical components, heat sinks, display hooks, and anti-theft series products. Our main markets include North America, South America, Europe, Japan, Australia, and mainland China

### 2. What about the lead time?

A: 15-30 working days for mass production.

### 3. Do you have any MOQ limit for

A: Low MOQ, 1pc for sample checking is available.

### 4. How do you ship the goods and how long does it take to arrive?

A: Ship by DHL, UPS, FedEx or TNT. It takes 3-5 days to arrive. Airline and sea shipping also optional.

## 5. How to proceed an order for?

- 1) Firstly let us know your requirements or application.
- 2) Secondly We quote according to your requirements or our suggestions.
- 3) Thirdly customer confirms the samples and places deposit for formal order.
- 4) Fourthly We arrange the production.

## 6. what to be clearly indicated when I send you drawing?

A: You are kindly requested to let us know the raw material, finish and quantity at least.

## 7: What if we are not completely satisfied with the parts we re-

A: We will replace any parts that you are not satisfied with free of charge. If we make a mistake, we will work with you to correct it.



Factory



+ Factory supply

After sale



+ Multiple specifications

Examination



+ well stocked

Specifications



+ On time delivery

High quality



+ Integrity

Tailor-made



+ Support



Item	Description
Product Name	Fixing Precision Copper Stamping Parts And Metal Bending Parts
Working Process	Blanking, stamping, Punching, deep drawing, bending, Coining, Curling,Forming, threading,welding, tapping, riveting, cnc machining, CNC Milling
Material	carbon steel, Stainless steel Aluminum, copper, brass, bronze (according to customer's requirements)
Surface Treatment	Galvanized, Zinc, nickel, chrome-plated, Powder Coating, Polishing, Spraying, Anodizing, Pickling, E-coating, etc.
Packing	Inner-Plastic Bag; Outer -Standard Carton Box + Pallet/Wood Case
Application	Automobiles, Construction, Transportation, Furniture, machinery, home appliance, electronic & electric appliance, Agricultural Equipments
Equipments	stamping/punching machine, CNC bending machine, CNC Laser cutting machine, 5-250T punching machines, Welding Manapulator
Thickness	0.5mm~12mm
File Format	Solidworks,Pro/Engineer,Auto CAD,PDF,JPG
Service	Warm and quick response service provided by the professional Export Sales Team with many years' experience in handling exports to the US, Europe, Japan and other countries and regions.
Inspection	100% QC as to each products

*Elevate your manufacturing processes with our factory-direct sales of precision copper bar stamping parts and metal bending parts. Crafted with meticulous attention to detail, these components offer unparalleled quality and performance for a wide range of applications.*

### Key Features:

**Precision Stamping:** Our precision stamping process ensures accurate reproduction of intricate designs and precise features on copper bars, guaranteeing optimal performance and functionality.

**Metal Bending Expertise:** With advanced bending techniques, we produce metal bending parts with precise angles and dimensions, meeting the most demanding specifications.

**High-Quality Materials:** We utilize high-quality copper alloys known for their durability, conductivity, and corrosion resistance, ensuring longevity and reliability in various environments.

**Versatile Applications:** These components find applications across industries such as electrical, automotive, telecommunications, and industrial machinery, demonstrating their versatility and adaptability.

### Advantages of Factory Direct Sales:

**Competitive Pricing:** By eliminating intermediaries, we offer competitive pricing for our precision copper bar stamping and metal bending parts, ensuring cost-effectiveness for your projects.

**Customization Options:** Our factory-direct model allows for greater flexibility in customization, enabling tailored solutions to meet your specific project requirements.

**Quick Turnaround:** With streamlined processes and efficient logistics, we ensure quick turnaround times, meeting your project timelines and production schedules.

### Applications:

**Electrical Components:** Ideal for electrical connectors, terminals, busbars, and circuit breakers, ensuring reliable conductivity and performance in electrical systems.

**Automotive Parts:** Used in brackets, mounts, connectors, and heat sinks for automotive applications, providing durability and stability in harsh conditions.

**Telecommunications:** Suitable for connectors, grounding bars, and antenna components in telecommunications equipment, ensuring signal integrity and reliability.

**Industrial Machinery:** Essential for components in machinery and equipment used in manufacturing processes, ensuring precision and durability in demanding industrial environments.

## Why Choose Us?

**Quality Assurance:** We adhere to stringent quality control measures throughout the manufacturing process to ensure that each part meets the highest standards of quality and performance.

**Experienced Team:** Our team consists of skilled technicians with years of experience in precision manufacturing, ensuring superior craftsmanship and attention to detail.

**Customer Satisfaction:** We are committed to providing exceptional customer service and support, ensuring that your needs are met and exceeded at every step of the process.

*Upgrade your manufacturing operations with our factory direct sales of precision copper bar stamping parts and metal bending parts. Contact us today to discuss your requirements and experience the difference in quality and service.*



**Shenzhen Dongfeng Shengshi Hardware products Co., LTD**



18682375931



905004489@qq.com



metalstamp-parts.com

Building 3, No.8 Zhenxing Road, Loucun Community, Xinhui Street, Guangming District, Shenzhen