



CNC polished aluminum metal stamping parts

Our Product Introduction

for more products please visit us on metalstamp-parts.com

Basic Information

- Place of Origin: China
- Minimum Order Quantity: 1000
- Price: \$ +1~10+Pcs
- Delivery Time: 15-20
- Payment Terms: L/C, D/A, D/P, T/T, Western Union, MoneyGram
- Supply Ability: 3000+pcs+Month



Product Specification

- Features: Lightweight, High Strength, Corrosion Resistance
- Application: Automotive, Electronics, Machinery, Etc.
- Material: Aluminum Sheet
- Size: Customized
- Thickness: 0.5mm-10mm
- Usage: Assembly, Fixing, Connecting
- Process: Stamping
- Tolerance: $\pm 0.01\text{mm}$
- Technology: CNC
- Surface Treatment: Burnishing
- Highlight: **Aluminum Sheet Metal Fabrication Hinge, Hinge Stainless Steel Laser Cutting Service**



Shenzhen Dongfeng Shengshi Hardware products Co., LTD

Choose us

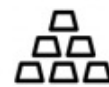
Combining affordability
and quality



Original price
sales



Multiple
specifications



Sufficient
raw materials



Fast
processing



Exquisite
craftsmanship



Invoiceable



Material: Aluminum sheet
technology: CNC
Surface Treatment: burnishing



Material

Aluminum sheet

Delivery time

20days

Price

\$1~10/pcs

technology

CNC

Surface Treatment

burnishing

Packing

12 in a box

About Us

Direct wholesale, self-produced and self sold



Shenzhen Dongfeng Shengshi Hardware products Co., LTD



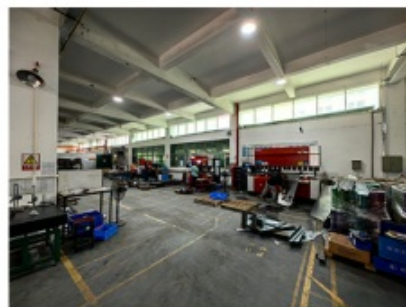
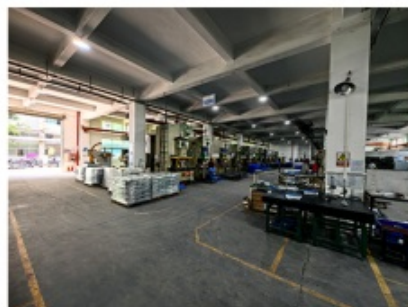
Company Profile



Shenzhen Dongfeng Shengshi Hardware Products Co., Ltd. was established in 2003 and is an ISO9001 certified factory. The company has been committed to the research and development, production and sales of hardware molds, ATM components, precision hinges, tapping parts, mechanical components, heat sinks, display hooks, and anti-theft series products. The company's main markets include North America, South America, Europe, Japan, Australia, and mainland China.

The company has complete equipment, mainly including: 48 large and small punches, 40 hand beer machines, 20 tapping machines, 25 drilling machines, 15 machining equipment, 6 lathes, 8 milling machines, 4 wire cutting machines, 5 precision grinders, CNC machining centers, spark machines, three production lines, and the quality management department's projectors, anemometer/cubic, hardness meters, altimeters, film thickness testers and other testing equipment.

The company adheres to the corporate tenet of "customer centeredness, quality as the foundation, continuous improvement and innovation, and continuous provision of high-quality products", constantly explores and strives to establish a good external image for the prosperous era of Dongfeng. We warmly welcome people from all walks of life to establish cooperative relationships with our company, work hand in hand, and create brilliance together!





After sales instructions



1. Are you a factory?

A: Yes, we are a factory with 21 years of experience, dedicated to the research and development, production, and sales of hardware molds, ATM components, precision hinges, stamping parts, mechanical components, heat sinks, display hooks, and anti-theft series products. Our main markets include North America, South America, Europe, Japan, Australia, and mainland China

2. What about the lead time?

A: 15-30 working days for mass production.

3. Do you have any MOQ limit for

A: Low MOQ, 1pc for sample checking is available.

4. How do you ship the goods and how long does it take to arrive?

A: Ship by DHL, UPS, FedEx or TNT. It takes 3-5 days to arrive. Airline and sea shipping also optional.

5. How to proceed an order for?

- 1) Firstly let us know your requirements or application.
- 2) Secondly We quote according to your requirements or our suggestions.
- 3) Thirdly customer confirms the samples and places deposit for formal order.
- 4) Fourthly We arrange the production.

6. what to be clearly indicated when I send you drawing?

A: You are kindly requested to let us know the raw material, finish and quantity at least.

7: What if we are not completely satisfied with the parts we re-

A: We will replace any parts that you are not satisfied with free of charge. If we make a mistake, we will work with you to correct it.



Factory



+ Factory supply

After sale



+ Multiple specifications

Examination



+ well stocked

Specifications



+ On time delivery

High quality



Tailor-made



+ Integrity
management

+ Support
customization

Shenzhen Dongfeng Shengshi Hardware products Co., LTD

Item	Description
Product Name	Aluminum Sheet Metal Fabrication Hinge Stainless Steel Laser Cutting Service Bending
Working Process	Blanking, stamping, Punching, deep drawing, bending, Coining, Curling,Forming, threading,welding, tapping, riveting, cnc machining, CNC Milling
Material	carbon steel, Stainless steel Aluminum, copper, brass, bronze (according to customer's requirements)
Surface Treatment	Galvanized, Zinc, nickel, chrome-plated, Powder Coating, Polishing, Spraying, Anodizing, Pickling, E-coating, etc.
Packing	Inner-Plastic Bag; Outer -Standard Carton Box + Pallet/Wood Case
Application	Automobiles, Construction, Transportation, Furniture, machinery, home appliance, electronic & electric appliance, Agricultural Equipments
Equipments	stamping/punching machine, CNC bending machine, CNC Laser cutting machine, 5-250T punching machines, Welding Manapulator
Thickness	0.5mm~12mm
File Format	Solidworks,Pro/Engineer,Auto CAD,PDF,JPG
Service	Warm and quick response service provided by the professional Export Sales Team with many years' experience in handling exports to the US, Europe, Japan and other countries and regions.
Inspection	100% QC as to each products

Upgrade your projects with our precision hinges crafted from aluminum and stainless steel. Engineered for durability, reliability, and smooth operation, our hinges offer precision and performance for a variety of applications.

Key Features:

Aluminum and Stainless Steel Construction: Our hinges are manufactured using high-quality aluminum and stainless steel materials, providing strength, corrosion resistance, and longevity for long-lasting performance.

Precision Engineering: Engineered with precision, our hinges ensure smooth operation and precise alignment, enhancing the functionality and aesthetics of your projects.

Versatile Design: With a versatile design, our hinges are suitable for a wide range of applications, including doors, cabinets, enclosures, and more, offering flexibility and adaptability to various projects.

Advantages:

Durability: Built to withstand frequent use and demanding environments, our hinges offer durability and reliability, ensuring consistent performance over time.

Smooth Operation: Designed for smooth operation, our hinges provide effortless opening and closing, contributing to user convenience and satisfaction.

Corrosion Resistance: The corrosion-resistant properties of aluminum and stainless steel make our hinges suitable for indoor and outdoor applications, providing protection against rust and degradation.

Applications:

Cabinet Doors: Ideal for cabinet doors in kitchens, bathrooms, and storage spaces, our hinges offer smooth and reliable operation for easy access to contents.

Enclosures: Suitable for enclosures in electronic devices, control panels, and machinery, our hinges ensure secure closure and alignment for optimal functionality.

Furniture: Used in furniture applications such as desks, tables, and chairs, our hinges provide stability and support for movable components.

Why Choose Us?

Quality Materials: We use high-quality aluminum and stainless steel materials to ensure the durability and longevity of our hinges.

Precision Engineering: Our hinges are engineered with precision to deliver smooth operation and precise alignment, enhancing the functionality of your projects.

Versatile Design: With a versatile design, our hinges offer flexibility and adaptability to various applications, making them suitable for a wide range of projects.

Upgrade your projects with our precision hinges crafted from aluminum and stainless steel. Contact us today to learn more about our hinge options and how they can enhance the functionality and aesthetics of your projects.



Shenzhen Dongfeng Shengshi Hardware products Co., LTD



18682375931



905004489@qq.com



metalstamp-parts.com

Building 3, No.8 Zhenxing Road, Loucun Community, Xinhua Street, Guangming District, Shenzhen