



## AL 1060-O Aluminum plate polishing hardware, aluminum row hardware

### Our Product Introduction

#### Basic Information

- Place of Origin: China
- Minimum Order Quantity: 1000
- Price: \$ +1~10+Pcs
- Delivery Time: 15-20
- Payment Terms: L/C, D/A, D/P, T/T, Western Union, MoneyGram
- Supply Ability: 3000+pcs+Month



#### Product Specification

- Size: Customized Size
- Material: AL 1060-O
- Technology: CNC
- Surface Treatment: Burnishing
- Depth Of Hinge Cup: 11.3mm, 10.5mm
- Thickness: 0.8mm, 2.0mm, 1mm, 0.8\*1.0\*1.0mm, 1.5mm
- Hole Pitch: 35MM, 45/48/52mm
- Diameter Of Hinge Cup: 35mm
- Cup Depth: 11.3mm, 10.5mm
- Highlight: Precision Straight Hinge, Flat Hinge Fabrication, 10.5mm Cup Depth Hinge Fabrication



Shenzhen Dongfeng Shengshi Hardware products Co., LTD



Choose us

Combining affordability and quality

Original price sales

Multiple specifications

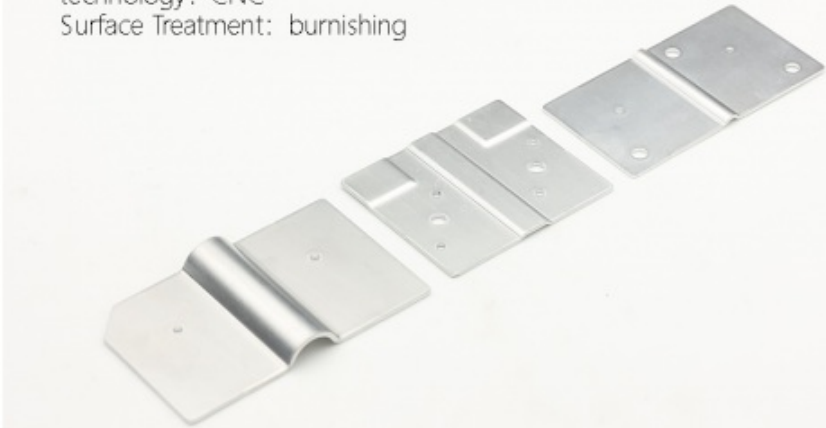
Sufficient raw materials

Fast processing

Exquisite craftsmanship

Invoicable

Material: Aluminum sheet  
technology: CNC  
Surface Treatment: burnishing



Material	<u>Aluminum sheet</u>	Delivery time	<u>20days</u>
Price	<u>\$1~10/pcs</u>	technology	<u>CNC</u>
Surface Treatment	<u>burnishing</u>	Packing	<u>12 in a box</u>

# About Us

Direct wholesale, self-produced and self sold



Shenzhen Dongfeng Shengshi Hardware products Co., LTD



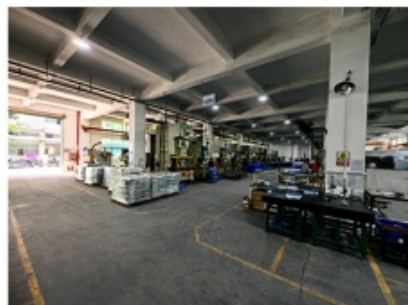
Company Profile



Shenzhen Dongfeng Shengshi Hardware Products Co., Ltd. was established in 2003 and is an ISO9001 certified factory. The company has been committed to the research and development, production and sales of hardware molds, ATM components, precision hinges, tapping parts, mechanical components, heat sinks, display hooks, and anti-theft series products. The company's main markets include North America, South America, Europe, Japan, Australia, and mainland China.

The company has complete equipment, mainly including: 48 large and small punches, 40 hand beer machines, 20 tapping machines, 25 drilling machines, 15 machining equipment, 6 lathes, 8 milling machines, 4 wire cutting machines, 5 precision grinders, CNC machining centers, spark machines, three production lines, and the quality management department's projectors, anemometer/cubic, hardness meters, altimeters, film thickness testers and other testing equipment.

The company adheres to the corporate tenet of "customer centeredness, quality as the foundation, continuous improvement and innovation, and continuous provision of high-quality products", constantly explores and strives to establish a good external image for the prosperous era of Dongfeng. We warmly welcome people from all walks of life to establish cooperative relationships with our company, work hand in hand, and create brilliance together!





After sales instructions



### 1. Are you a factory?

A: Yes, we are a factory with 21 years of experience, dedicated to the research and development, production, and sales of hardware molds, ATM components, precision hinges, stamping parts, mechanical components, heat sinks, display hooks, and anti-theft series products. Our main markets include North America, South America, Europe, Japan, Australia, and mainland China

### 2. What about the lead time?

A: 15-30 working days for mass production.

### 3. Do you have any MOQ limit for

A: Low MOQ, 1pc for sample checking is available.

### 4. How do you ship the goods and how long does it take to arrive?

A: Ship by DHL, UPS, FedEx or TNT. It takes 3-5 days to arrive. Airline and sea shipping also optional.

## 5. How to proceed an order for?

- 1) Firstly let us know your requirements or application.
- 2) Secondly We quote according to your requirements or our suggestions.
- 3) Thirdly customer confirms the samples and places deposit for formal order.
- 4) Fourthly We arrange the production.

## 6. what to be clearly indicated when I send you drawing?

A: You are kindly requested to let us know the raw material, finish and quantity at least.

## 7: What if we are not completely satisfied with the parts we re-

A: We will replace any parts that you are not satisfied with free of charge. If we make a mistake, we will work with you to correct it.



Factory



+ Factory supply

After sale



+ Multiple specifications

Examination



+ well stocked

Specifications



+ On time delivery

High quality



+ Integrity

Tailor-made



+ Support



Item	Description
Product Name	Precision Straight Hinge Flat Hinge Fabrication 11.3mm 10.5mm Cup Depth
Working Process	Blanking, stamping, Punching, deep drawing, bending, Coining, Curling,Forming, threading,welding, tapping, riveting, cnc machining, CNC Milling
Material	carbon steel, Stainless steel Aluminum, copper, brass, bronze (according to customer's requirements)
Surface Treatment	Galvanized, Zinc, nickel, chrome-plated, Powder Coating, Polishing, Spraying, Anodizing, Pickling, E-coating, etc.
Packing	Inner-Plastic Bag; Outer -Standard Carton Box + Pallet/Wood Case
Application	Automobiles, Construction, Transportation, Furniture, machinery, home appliance, electronic & electric appliance, Agricultural Equipments
Equipments	stamping/punching machine, CNC bending machine, CNC Laser cutting machine, 5-250T punching machines, Welding Manapulator
Thickness	0.5mm~12mm
File Format	Solidworks,Pro/Engineer,Auto CAD,PDF,JPG
Service	Warm and quick response service provided by the professional Export Sales Team with many years' experience in handling exports to the US, Europe, Japan and other countries and regions.
Inspection	100% QC as to each products

*Enhance the functionality and aesthetics of your projects with our factory-customized precision straight hinges in a flat hinge style. Engineered for durability and precision, these hinges offer reliable performance and seamless operation, catering to a wide range of applications.*

### Key Features:

**Flat Hinge Style:** Our straight hinges feature a flat design, providing a sleek and minimalist appearance while ensuring optimal functionality.

**Precision Engineering:** Meticulously engineered for precise alignment and smooth operation, our hinges deliver consistent performance and seamless functionality.

**Customization Options:** With our factory customization capabilities, you have the flexibility to tailor the hinges to your specific requirements, including size, material, finish, and mounting configuration.

### Advantages:

**Durability and Reliability:** Built to withstand regular use and environmental factors, our straight hinges offer exceptional durability and reliability, ensuring long-lasting performance.

**Smooth Operation:** Designed for smooth and effortless operation, our hinges provide a seamless user experience, enhancing convenience and satisfaction.

**Versatile Applications:** Suitable for a variety of applications, including doors, cabinets, enclosures, and furniture, our hinges offer versatility and adaptability to different projects and industries.

### Applications:

**Cabinet Doors:** Perfect for use in kitchen cabinets, bathroom cabinets, and storage units, our straight hinges ensure secure and smooth opening and closing of doors.

**Enclosures:** Ideal for enclosures in electronic devices, control panels, and machinery, our hinges provide reliable support and alignment for access panels and doors.

**Furniture:** Used in furniture applications such as desks, tables, and chairs, our hinges offer stability and functionality for movable components.

## Why Choose Us?

**Quality Assurance:** We adhere to strict quality standards in every stage of production, ensuring that our hinges meet the highest standards of craftsmanship and performance.

**Customization Expertise:** With our extensive customization capabilities, we can create hinges that perfectly match your project requirements and design preferences.

**Timely Delivery:** Our streamlined manufacturing process allows us to deliver customized hinges promptly, ensuring that you receive your order on time and within budget.

### **High-Quality Materials:**

*Crafted from premium-grade materials such as stainless steel and aluminum, our straight hinges ensure durability, corrosion resistance, and longevity. These materials are chosen for their exceptional strength and resilience, guaranteeing reliable performance even in demanding environments.*

### **Precision Manufacturing:**

*Utilizing advanced manufacturing techniques and state-of-the-art machinery, we ensure that each hinge is produced with precision and accuracy. Our commitment to quality craftsmanship results in hinges that meet stringent standards for fit, finish, and functionality.*

### **Customization Options:**

*We understand that every project is unique, which is why we offer a wide range of customization options. From size and shape to finish and mounting configuration, you can tailor the hinges to suit your specific requirements and design preferences.*

### **Versatile Applications:**

*Our straight hinges are suitable for a diverse range of applications, including residential, commercial, and industrial settings. Whether used in cabinets, doors, enclosures, or furniture, these hinges offer versatile solutions for various projects.*

### **Expert Support:**

*Our team of experts is dedicated to providing exceptional customer service and support throughout the entire process. From initial consultation to final delivery, we work closely with you to ensure that your hinge requirements are met with precision and efficiency.*

*Upgrade your projects with our high-quality, precision-manufactured straight hinges. Contact us today to learn more about our customization options and how we can help enhance the functionality and aesthetic appeal of your projects.*



**Shenzhen Dongfeng Shengshi Hardware products Co., LTD**



18682375931



905004489@qq.com



metalstamp-parts.com

Building 3, No.8 Zhenxing Road, Loucun Community, Xinhua Street, Guangming District, Shenzhen