



AL 1060-O CNC series aluminum bar hardware

Our Product Introduction

for more products please visit us on metalstamp-parts.com

Basic Information

- Place of Origin: China
- Minimum Order Quantity: 1000
- Price: \$ +1~10+Pcs
- Delivery Time: 15-20
- Payment Terms: L/C, D/A, D/P, T/T, Western Union, MoneyGram
- Supply Ability: 3000+pcs+Month



Product Specification

- Size: Customized Size
- Material: Aluminum Sheet
- Technology: CNC
- Surface Treatment: Burnishing
- Depth Of Hinge Cup: 11.3mm, 10.5mm
- Thickness: 0.8mm, 2.0mm, 1mm, 0.8*1.0*1.0mm, 1.5mm
- Diameter Of Hinge Cup: 35mm
- Highlight: **Aluminum Precision Practical Hinges, Customize Aluminum Practical Hinges, Customize Fabricated Hinges**



Shenzhen Dongfeng Shengshi Hardware products Co., LTD



Choose us

Combining affordability and quality


Original price sales


Multiple specifications


Sufficient raw materials


Fast processing


Exquisite craftsmanship


Invoicable



Material	<u>Aluminum sheet</u>	Delivery time	<u>20days</u>
Price	<u>\$1~10/pcs</u>	technology	<u>CNC</u>
Surface Treatment	burnishing	Packing	<u>12 in a box</u>

About Us

Direct wholesale, self-produced and self sold



Shenzhen Dongfeng Shengshi Hardware products Co., LTD



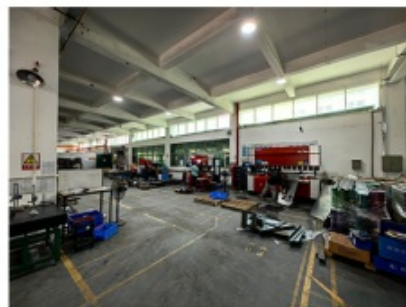
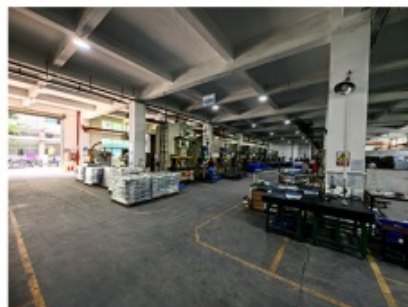
Company Profile



Shenzhen Dongfeng Shengshi Hardware Products Co., Ltd. was established in 2003 and is an ISO9001 certified factory. The company has been committed to the research and development, production and sales of hardware molds, ATM components, precision hinges, tapping parts, mechanical components, heat sinks, display hooks, and anti-theft series products. The company's main markets include North America, South America, Europe, Japan, Australia, and mainland China.

The company has complete equipment, mainly including: 48 large and small punches, 40 hand beer machines, 20 tapping machines, 25 drilling machines, 15 machining equipment, 6 lathes, 8 milling machines, 4 wire cutting machines, 5 precision grinders, CNC machining centers, spark machines, three production lines, and the quality management department's projectors, anime/cubic, hardness meters, altimeters, film thickness testers and other testing equipment.

The company adheres to the corporate tenet of "customer centeredness, quality as the foundation, continuous improvement and innovation, and continuous provision of high-quality products", constantly explores and strives to establish a good external image for the prosperous era of Dongfeng. We warmly welcome people from all walks of life to establish cooperative relationships with our company, work hand in hand, and create brilliance together!





After sales instructions



1. Are you a factory?

A: Yes, we are a factory with 21 years of experience, dedicated to the research and development, production, and sales of hardware molds, ATM components, precision hinges, stamping parts, mechanical components, heat sinks, display hooks, and anti-theft series products. Our main markets include North America, South America, Europe, Japan, Australia, and mainland China

2. What about the lead time?

A: 15-30 working days for mass production.

3. Do you have any MOQ limit for

A: Low MOQ, 1pc for sample checking is available.

4. How do you ship the goods and how long does it take to arrive?

A: Ship by DHL, UPS, FedEx or TNT. It takes 3-5 days to arrive. Airline and sea shipping also optional.

5. How to proceed an order for?

- 1) Firstly let us know your requirements or application.
- 2) Secondly We quote according to your requirements or our suggestions.
- 3) Thirdly customer confirms the samples and places deposit for formal order.
- 4) Fourthly We arrange the production.

6. what to be clearly indicated when I send you drawing?

A: You are kindly requested to let us know the raw material, finish and quantity at least.

7: What if we are not completely satisfied with the parts we re-

A: We will replace any parts that you are not satisfied with free of charge. If we make a mistake, we will work with you to correct it.



Factory



+ Factory supply

After sale



+ Multiple specifications

Examination



+ well stocked

Specifications



+ On time delivery

High quality



+ Integrity

Tailor-made



+ Support

Item	Description
Product Name	Customize Fabricated Hinges Aluminum Precision Practical Hinges
Working Process	Blanking, stamping, Punching, deep drawing, bending, Coining, Curling,Forming, threading,welding, tapping, riveting, cnc machining, CNC Milling
Material	carbon steel, Stainless steel Aluminum, copper, brass, bronze (according to customer's requirements)
Surface Treatment	Galvanized, Zinc, nickel, chrome-plated, Powder Coating, Polishing, Spraying, Anodizing, Pickling, E-coating, etc.
Packing	Inner-Plastic Bag; Outer -Standard Carton Box + Pallet/Wood Case
Application	Automobiles, Construction, Transportation, Furniture, machinery, home appliance, electronic & electric appliance, Agricultural Equipments
Equipments	stamping/punching machine, CNC bending machine, CNC Laser cutting machine, 5-250T punching machines, Welding Manapulator
Thickness	0.5mm~12mm
File Format	Solidworks,Pro/Engineer,Auto CAD,PDF,JPG
Service	Warm and quick response service provided by the professional Export Sales Team with many years' experience in handling exports to the US, Europe, Japan and other countries and regions.
Inspection	100% QC as to each products

Elevate your projects with our factory-direct sales of customizable stainless steel and aluminum metal precision hinges. Engineered for practicality and precision, our hinges offer durability, reliability, and seamless operation, catering to a wide range of applications.

Key Features:

Stainless Steel and Aluminum Construction: Crafted from high-quality stainless steel and aluminum materials, our hinges provide exceptional strength, corrosion resistance, and longevity, ensuring reliable performance in diverse environments.

Precision Engineering: Meticulously engineered for precise fitment and smooth operation, our hinges guarantee seamless functionality and optimal alignment, enhancing the overall performance of your projects.

Customization Options: We offer a variety of customization options, including size, shape, finish, and mounting configurations, allowing you to tailor the hinges to your specific requirements and preferences.

Advantages:

Durability and Reliability: Built to withstand regular use and environmental factors, our hinges deliver exceptional durability and reliability, ensuring long-term performance and minimal maintenance.

Smooth Operation: With precise engineering and manufacturing, our hinges provide smooth and effortless operation, contributing to user convenience and satisfaction.

Versatile Applications: Suitable for a wide range of applications, including doors, cabinets, enclosures, and machinery, our hinges offer versatility and adaptability to various projects and industries.

Applications:

Cabinet Doors: Ideal for use in kitchen cabinets, bathroom cabinets, and storage units, our hinges ensure secure and smooth opening and closing of doors.

Enclosures: Suitable for enclosures in electronic devices, control panels, and machinery, our hinges provide reliable support and alignment for access panels and doors.

Furniture: Used in furniture applications such as desks, tables, and chairs, our hinges offer stability and functionality for movable components.

Why Choose Us?

Quality Assurance: We prioritize quality and precision in every hinge we produce, ensuring that each hinge meets the highest standards of craftsmanship and performance.

Customization Flexibility: With our customizable options, you have the freedom to create hinges that perfectly match your project requirements and design preferences.

Prompt Delivery: Our streamlined production process allows us to deliver customized hinges promptly, ensuring that you receive your order on time and within budget.

Upgrade your projects with our factory-direct sales of customizable stainless steel and aluminum metal precision hinges. Contact us today to discuss your hinge requirements and explore how our solutions can enhance the functionality and aesthetics of your projects.



Shenzhen Dongfeng Shengshi Hardware products Co., LTD



18682375931



905004489@qq.com



metalstamp-parts.com

Building 3, No.8 Zhenxing Road, Loucun Community, Xihu Street, Guangming District, Shenzhen