



AL 1060-O Aluminum Hardware Stamping RH-1P24S Series Aluminum Row Component

Basic Information

- Place of Origin: China
- Minimum Order Quantity: 1000
- Price: \$ +1~10+Pcs
- Delivery Time: 15-20
- Payment Terms: L/C, D/A, D/P, T/T, Western Union, MoneyGram
- Supply Ability: 3000+pcs+Month



Product Specification

- Country/Region Of Manufacture: China
- Material: AL 1060-O
- Specifications: W105.89*L55.04mm
- Material Thickness: 1.56mm
- Type: Flat Hinge
- Product Name: Hydraulic Furniture Hinge Cabinet Hinge,American Hinge,south American Market Hot Sale Take Apart Door Hinge H Hinge,american Steel Soft Close Cabinet Hinge
- Highlight: **Stainless Steel Interlock Hanging Buckle, Interlock Hanging Buckle Flush Mount, Flush Mount Bracket Furniture Connector**



Product Description

Our Product Introduction

for more products please visit us on metalstamp-parts.com

Shenzhen Dongfeng Shengshi Hardware products Co., LTD

Choose us

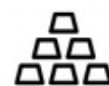
Combining affordability
and quality



Original price
sales



Multiple
specifications



Sufficient
raw materials



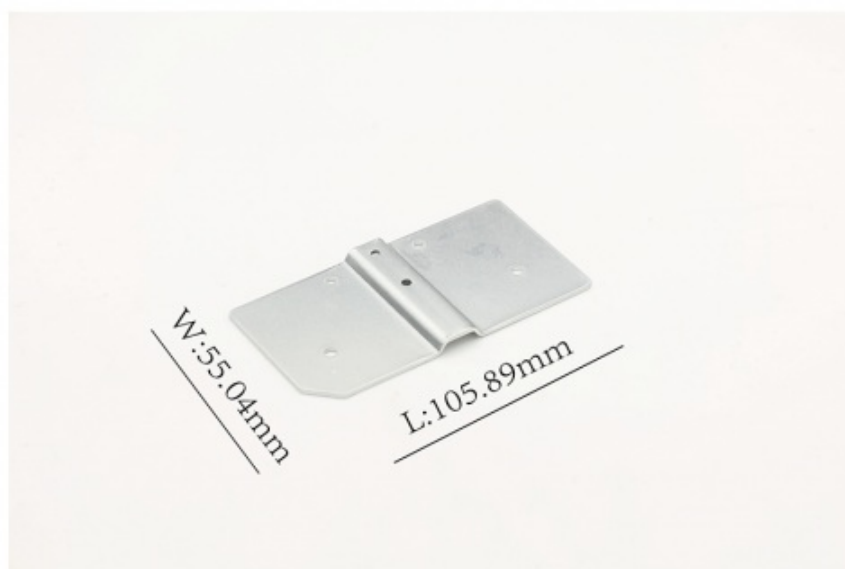
Fast
processing



Exquisite
craftsmanship



Invoiceable



Material

Aluminum sheet

Delivery time

20days

Price

\$1~10/pcs

Material thickness

1.56mm

specifications

W:105.89mm*
L:55.04mm

Packing

12 in a box

About Us

Direct wholesale, self-produced and self sold



Shenzhen Dongfeng Shengshi Hardware products Co., LTD



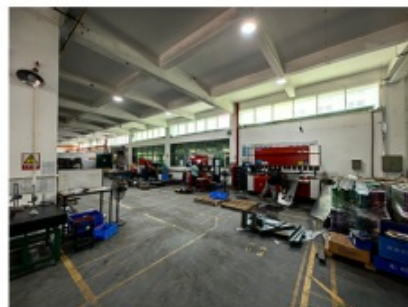
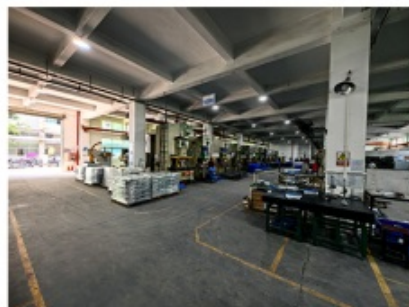
Company Profile



Shenzhen Dongfeng Shengshi Hardware Products Co., Ltd. was established in 2003 and is an ISO9001 certified factory. The company has been committed to the research and development, production and sales of hardware molds, ATM components, precision hinges, tapping parts, mechanical components, heat sinks, display hooks, and anti-theft series products. The company's main markets include North America, South America, Europe, Japan, Australia, and mainland China.

The company has complete equipment, mainly including: 48 large and small punches, 40 hand beer machines, 20 tapping machines, 25 drilling machines, 15 machining equipment, 6 lathes, 8 milling machines, 4 wire cutting machines, 5 precision grinders, CNC machining centers, spark machines, three production lines, and the quality management department's projectors, anemometer/cubic, hardness meters, altimeters, film thickness testers and other testing equipment.

The company adheres to the corporate tenet of "customer centeredness, quality as the foundation, continuous improvement and innovation, and continuous provision of high-quality products", constantly explores and strives to establish a good external image for the prosperous era of Dongfeng. We warmly welcome people from all walks of life to establish cooperative relationships with our company, work hand in hand, and create brilliance together!





After sales instructions



1. Are you a factory?

A: Yes, we are a factory with 21 years of experience, dedicated to the research and development, production, and sales of hardware molds, ATM components, precision hinges, stamping parts, mechanical components, heat sinks, display hooks, and anti-theft series products. Our main markets include North America, South America, Europe, Japan, Australia, and mainland China

2. What about the lead time?

A: 15-30 working days for mass production.

3. Do you have any MOQ limit for

A: Low MOQ, 1pc for sample checking is available.

4. How do you ship the goods and how long does it take to arrive?

A: Ship by DHL, UPS, FedEx or TNT. It takes 3-5 days to arrive. Airline and sea shipping also optional.

5. How to proceed an order for?

- 1) Firstly let us know your requirements or application.
- 2) Secondly We quote according to your requirements or our suggestions.
- 3) Thirdly customer confirms the samples and places deposit for formal order.
- 4) Fourthly We arrange the production.

6. what to be clearly indicated when I send you drawing?

A: You are kindly requested to let us know the raw material, finish and quantity at least.

7: What if we are not completely satisfied with the parts we re-

A: We will replace any parts that you are not satisfied with free of charge. If we make a mistake, we will work with you to correct it.



Factory



+ Factory supply

After sale



+ Multiple specifications

Examination



+ well stocked

Specifications



+ On time delivery

High quality



+ Integrity

Tailor-made



+ Support

Item	Description
Product Name	Stainless Steel Interlock Hanging Buckle Flush Mount Bracket Furniture Connector
Working Process	Blanking, stamping, Punching, deep drawing, bending, Coining, Curling,Forming, threading,welding, tapping, riveting, cnc machining, CNC Milling
Material	carbon steel, Stainless steel Aluminum, copper, brass, bronze (according to customer's requirements)
Surface Treatment	Galvanized, Zinc, nickel, chrome-plated, Powder Coating, Polishing, Spraying, Anodizing, Pickling, E-coating, etc.
Packing	Inner-Plastic Bag; Outer -Standard Carton Box + Pallet/Wood Case
Application	Automobiles, Construction, Transportation, Furniture, machinery, home appliance, electronic & electric appliance, Agricultural Equipments
Equipments	stamping/punching machine, CNC bending machine, CNC Laser cutting machine, 5-250T punching machines, Welding Manapulator
Thickness	0.5mm~12mm
File Format	Solidworks,Pro/Engineer,Auto CAD,PDF,JPG
Service	Warm and quick response service provided by the professional Export Sales Team with many years' experience in handling exports to the US, Europe, Japan and other countries and regions.
Inspection	100% QC as to each products

Our factory specializes in the manufacturing of high-quality flat hinges using precision cutting and stamping techniques. These hinges are meticulously crafted to meet stringent quality standards and provide reliable performance in various applications.

Key Features:

Premium Materials: We use high-quality materials to ensure the durability and longevity of our flat hinges, offering enhanced stability and resistance to wear and tear.

Precision Cutting: Advanced cutting techniques are employed to achieve precise dimensions and smooth edges, ensuring a perfect fit and seamless operation.

Stamping Expertise: Our stamping process ensures consistent quality and uniformity across all hinges, resulting in reliable performance and longevity.

Customization Options: We offer customization options to meet specific requirements, including size variations, material choices, and surface finishes.

Benefits:

Durability: Our flat hinges are built to withstand frequent use and heavy loads, ensuring long-term reliability and stability.

Smooth Operation: Precision cutting and stamping result in hinges with smooth surfaces and precise alignments, providing smooth and effortless operation.

Versatility: These flat hinges are suitable for various applications, including doors, cabinets, furniture, and industrial equipment.

Quality Assurance: Each hinge undergoes rigorous quality checks to ensure that it meets our high standards for performance and durability.

Why Choose Us?

Expertise: With years of experience in manufacturing hinges, we possess the knowledge and skills to deliver products of superior quality and craftsmanship.

Advanced Technology: Our factory is equipped with cutting-edge machinery and tools to ensure efficient production

processes and high-quality results.

Customization: We work closely with our clients to understand their unique requirements and provide tailored solutions that meet their needs.

Reliability: Customers can rely on us for consistent quality, timely delivery, and excellent customer service.



Shenzhen Dongfeng Shengshi Hardware products Co., LTD



18682375931



905004489@qq.com



metalstamp-parts.com

Building 3, No.8 Zhenxing Road, Loucun Community, Xinhua Street, Guangming District, Shenzhen