



## SUS304-1/2H stainless steel metal custom shaped hinge

### Basic Information

- Place of Origin: China
- Minimum Order Quantity: 1000
- Price: \$ +1~10+Pcs
- Delivery Time: 15-20
- Payment Terms: L/C, D/A, D/P, T/T, Western Union, MoneyGram
- Supply Ability: 3000+pcs+Month



### Product Specification

- Color: Customized Color
- Type: Furniture Hinge, left And Right, Short Arm Hinge
- Material: SUS304-1/2H
- Material Thickness: 2.2mm
- Specifications: L112\*W70mm
- Axis:  $\varnothing 5.0 \times L69.9\text{mm}$
- Highlight: Customized Mechanical Hinges Galvanized, Mechanical Hinges Galvanized Sheet Metal Parts



## Product Description

### Our Product Introduction

for more products please visit us on [metalstamp-parts.com](http://metalstamp-parts.com)

Shenzhen Dongfeng Shengshi Hardware products Co., LTD

Choose us

Combining affordability  
and quality



Original price  
sales



Multiple  
specifications



Sufficient  
raw materials



Fast  
processing



Exquisite  
craftsmanship



Invoiceable



Material

SUS304-1/2H

Delivery time

20days

Price

\$1~10/pcs

Material thickness

2.2mm

specifications

L112\*W70mm

axis

&oslash;  
5.0\*L69.9mm

# About Us

Direct wholesale, self-produced and self sold



Shenzhen Dongfeng Shengshi Hardware products Co., LTD



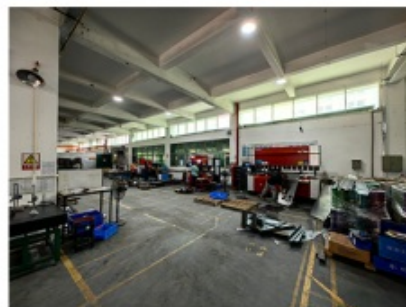
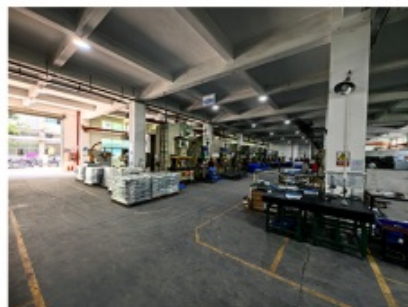
Company Profile



Shenzhen Dongfeng Shengshi Hardware Products Co., Ltd. was established in 2003 and is an ISO9001 certified factory. The company has been committed to the research and development, production and sales of hardware molds, ATM components, precision hinges, tapping parts, mechanical components, heat sinks, display hooks, and anti-theft series products. The company's main markets include North America, South America, Europe, Japan, Australia, and mainland China.

The company has complete equipment, mainly including: 48 large and small punches, 40 hand beer machines, 20 tapping machines, 25 drilling machines, 15 machining equipment, 6 lathes, 8 milling machines, 4 wire cutting machines, 5 precision grinders, CNC machining centers, spark machines, three production lines, and the quality management department's projectors, anemometer/cubic, hardness meters, altimeters, film thickness testers and other testing equipment.

The company adheres to the corporate tenet of "customer centeredness, quality as the foundation, continuous improvement and innovation, and continuous provision of high-quality products", constantly explores and strives to establish a good external image for the prosperous era of Dongfeng. We warmly welcome people from all walks of life to establish cooperative relationships with our company, work hand in hand, and create brilliance together!





After sales instructions



### 1. Are you a factory?

A: Yes, we are a factory with 21 years of experience, dedicated to the research and development, production, and sales of hardware molds, ATM components, precision hinges, stamping parts, mechanical components, heat sinks, display hooks, and anti-theft series products. Our main markets include North America, South America, Europe, Japan, Australia, and mainland China

### 2. What about the lead time?

A: 15-30 working days for mass production.

### 3. Do you have any MOQ limit for

A: Low MOQ, 1pc for sample checking is available.

### 4. How do you ship the goods and how long does it take to arrive?

A: Ship by DHL, UPS, FedEx or TNT. It takes 3-5 days to arrive. Airline and sea shipping also optional.

## 5. How to proceed an order for?

- 1) Firstly let us know your requirements or application.
- 2) Secondly We quote according to your requirements or our suggestions.
- 3) Thirdly customer confirms the samples and places deposit for formal order.
- 4) Fourthly We arrange the production.

## 6. what to be clearly indicated when I send you drawing?

A: You are kindly requested to let us know the raw material, finish and quantity at least.

## 7: What if we are not completely satisfied with the parts we re-

A: We will replace any parts that you are not satisfied with free of charge. If we make a mistake, we will work with you to correct it.



Factory



+ Factory supply

After sale



+ Multiple specifications

Examination



+ well stocked

Specifications



+ On time delivery

High quality



+ Integrity

Tailor-made



+ Support

Item	Description
Product Name	Customized Mechanical Hinges Galvanized Sheet Metal Parts
Working Process	Blanking, stamping, Punching, deep drawing, bending, Coining, Curling,Forming, threading,welding, tapping, riveting, cnc machining, CNC Milling
Material	carbon steel, Stainless steel Aluminum, copper, brass, bronze (according to customer's requirements)
Surface Treatment	Galvanized, Zinc, nickel, chrome-plated, Powder Coating, Polishing, Spraying, Anodizing, Pickling, E-coating, etc.
Packing	Inner-Plastic Bag; Outer -Standard Carton Box + Pallet/Wood Case
Application	Automobiles, Construction, Transportation, Furniture, machinery, home appliance, electronic & electric appliance, Agricultural Equipments
Equipments	stamping/punching machine, CNC bending machine, CNC Laser cutting machine, 5-250T punching machines, Welding Manapulator
Thickness	0.5mm~12mm
File Format	Solidworks,Pro/Engineer,Auto CAD,PDF,JPG
Service	Warm and quick response service provided by the professional Export Sales Team with many years' experience in handling exports to the US, Europe, Japan and other countries and regions.
Inspection	100% QC as to each products

**Introduction:** Welcome to our specialized service offering customized hinges for small mechanical equipment, crafted from galvanized sheet metal. We pride ourselves on delivering precision-engineered hinges that meet your specific requirements, ensuring durability, functionality, and seamless integration into your equipment.

**Galvanized Sheet Metal Advantage:** Galvanized sheet metal offers several advantages for small mechanical equipment hinges. It provides exceptional corrosion resistance, ensuring longevity even in harsh environments. Additionally, galvanized coatings enhance the durability of the hinges, making them ideal for applications where strength and resilience are paramount.

**Tailored to Your Needs:** We understand that every piece of equipment is unique, which is why we offer customized solutions for hinges. Whether you require specific dimensions, load-bearing capacities, or mounting configurations, our team works closely with you to ensure that the hinges meet your exact specifications and fit seamlessly into your equipment.

**Precision Engineering:** Our hinges are crafted with precision engineering techniques to ensure smooth operation and long-lasting performance. Using advanced machinery and meticulous craftsmanship, we manufacture hinges with tight tolerances and precise alignment, providing reliability and functionality for your mechanical equipment.

**Diverse Applications:** Our customized hinges find applications across a wide range of small mechanical equipment, including cabinets, enclosures, access panels, and more. Whether you're in the automotive, electronics, or industrial sector, our hinges are versatile enough to meet the demands of your specific application.

**Quality Assurance:** Quality is our top priority, and we adhere to stringent quality control measures throughout the manufacturing process. From material selection to final inspection, we ensure that each hinge meets our high standards of craftsmanship and durability, providing you with peace of mind and confidence in your equipment.

**Collaborative Partnership:** We value collaborative partnerships with our clients and prioritize open communication and transparency throughout the manufacturing process. Our dedicated team is committed to understanding your needs and delivering hinges that exceed your expectations in terms of quality, performance, and reliability.

**Contact Us Today:** Ready to enhance your small mechanical equipment with customized hinges crafted from galvanized sheet metal? Contact us today to discuss your project requirements and discover how we can help bring your vision to life. With our expertise and commitment to excellence, we're here to provide the hinges you need for optimal performance and functionality in your equipment.



18682375931



905004489@qq.com



metalstamp-parts.com

Building 3, No.8 Zhenxing Road, Loucun Community, Xihu Street, Guangming District, Shenzhen