



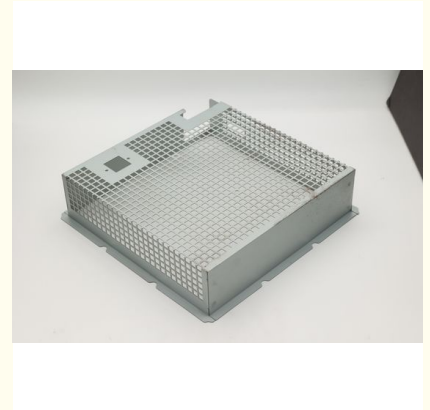
Sheet Metal Parts Metal Case Fabrication 250X250X60CM Chassis

Our Product Introduction

for more products please visit us on metalstamp-parts.com

Basic Information

- Place of Origin: China
- Minimum Order Quantity: 1000
- Price: \$ +4.5~5+Pcs
- Delivery Time: 15-20
- Payment Terms: L/C, D/A, D/P, T/T, Western Union, MoneyGram
- Supply Ability: 3000+pcs+Month



Product Specification

- Size: 250X250X60CM
- Material: Carbon Steel, Stainless Steel Aluminum, SECC (according To Customer's Requirements)
- Thickness: 0.5mm~ 12mm
- Product Name: Sheet Metal Tool Box, sheet Metal Fabrication, sheet Metal Aluminum Power Supply Battery Enclosure
- Weight Specifications: 290G
- Precision: $\pm 0.05-0.1$ mm
- Highlight: **Metal Case Fabrication 0.5mm, 16.0mm Sheet Metal Parts, 16mm Sheet Metal Chassis**



Product Description

Our Product Introduction

for more products please visit us on metastamp-parts.com

Shenzhen Dongfeng Shengshi Hardware products Co., LTD



Choose us

Combining affordability and quality



Original price sales



Multiple specifications



Sufficient raw materials



Fast processing



Exquisite craftsmanship



Invoicable

products name	Sheet Metal Parts	Delivery time	20days
Price	\$4.5~5/pcs	Specification	290G

weight and size 250X250X60CM

Packing 12 in a box

technology stamping

meterial quality SECC

About Us

Direct wholesale, self-produced and self sold



Shenzhen Dongfeng Shengshi Hardware products Co., LTD



Company Profile



Shenzhen Dongfeng Shengshi Hardware Products Co., Ltd. was established in 2003 and is an IOS9001 certified factory. The company has been committed to the research and development, production and sales of hardware molds, ATM components, precision hinges, stamping parts, mechanical components, heat sinks, display hooks, and anti-theft series products. The company's main markets include North America, South America, Europe, Japan, Australia, and mainland China.

The company has complete equipment, mainly including: 48 large and small punches, 40 hand beer machines, 20 tapping machines, 25 drilling machines, 15 machining equipment, 6 lathes, 8 milling machines, 4 wire cutting machines, 5 precision grinders, CNC machining centers, spark machines, three production lines, and the quality management department's projectors, anemometer/cubic, hardness meters, altimeters, film thickness testers and other testing equipment.

The company adheres to the corporate tenet of "customer centeredness, quality as the foundation, continuous improvement and innovation, and continuous provision of high-quality products", constantly explores and strives to establish a good external image for the prosperous era of Dongfeng. We warmly welcome people from all walks of life to establish cooperative relationships with our company, work hand in hand, and create brilliance together!





After sales instructions



1. Are you a factory?

A: Yes, we are a factory with 21 years of experience, dedicated to the research and development, production, and sales of hardware molds, ATM components, precision hinges, stamping parts, mechanical components, heat sinks, display hooks, and anti-theft series products. Our main markets include North America, South America, Europe, Japan, Australia, and mainland China

2. What about the lead time?

A: 15-30 working days for mass production.

3. Do you have any MOQ limit for

A: Low MOQ, 1pc for sample checking is available.

4. How do you ship the goods and how long does it take to arrive?

A: Ship by DHL, UPS, FedEx or TNT. It takes 3-5 days to arrive. Airline and sea shipping also optional.

5. How to proceed an order for?

- 1) Firstly let us know your requirements or application.
- 2) Secondly We quote according to your requirements or our suggestions.
- 3) Thirdly customer confirms the samples and places deposit for formal order.
- 4) Fourthly We arrange the production.

6. what to be clearly indicated when I send you drawing?

A: You are kindly requested to let us know the raw material, finish and quantity at least.

7: What if we are not completely satisfied with the parts we re-

A: We will replace any parts that you are not satisfied with free of charge. If we make a mistake, we will work with you to correct it.



Factory



+ Factory supply

After sale



+ Multiple specifications

Examination



+ well stocked

Specifications



+ On time delivery

High quality
+ Integrity
management



Tailor-made
+ Support
customization



Shenzhen Dongfeng Shengshi Hardware products Co., LTD

Item	Description
Product Name	Sheet Metal Parts Metal Case Fabrication 250X250X60CM Chassis
Working Process	Blanking, stamping, Punching, deep drawing, bending, Coining, Curling,Forming, threading,welding, tapping, riveting
Material	Stainless steel Aluminum, SECC (according to customer's requirements)
Surface Treatment	Galvanized, nickel, chrome-plated, Powder Coating, Anodizing, Pickling, E-coating, etc.
Packing	Inner-Plastic Bag; Outer -Standard Carton Box + Pallet/Wood Case
Application	Construction, Transportation, Furniture, machinery, electronic & electric appliance, Agricultural Equipments
File Format	Solidworks,Pro/Engineer,Auto CAD,PDF,JPG
Service	Warm and quick response service provided by the professional Export Sales Team with many years' experience in handling exports to the US, Europe, Japan and other countries and regions.
Inspection	100% QC as to each products

Elevate your projects with our factory direct sales of stamping sheet metal laser cutting parts and metal shell manufacturing service. Crafted with precision and expertise, our components offer durability, reliability, and versatility for a wide range of applications.

Key Features:

Stamping Sheet Metal Parts: Our advanced stamping technology ensures precise fabrication of sheet metal components with accurate dimensions and intricate designs, guaranteeing consistency and quality across every piece.

Laser Cutting: Utilizing state-of-the-art laser cutting technology, we offer precise and intricate cuts on sheet metal, allowing for customized shapes, patterns, and designs according to your specifications.

Metal Shell Manufacturing: Our metal shell manufacturing service provides robust and reliable enclosures for various applications, ensuring protection and durability for sensitive equipment and components.

Advantages of Our Service:

Durable and Reliable: Built to withstand demanding environments and operating conditions, our components and metal shells offer durability, reliability, and longevity, ensuring consistent performance over time.

Versatile Applications: Whether for automotive, electronics, or industrial applications, our components and metal shells are suitable for diverse uses, providing versatility and adaptability to various industries.

Customization Options: We offer extensive customization options, including material selection, surface finishes, and design modifications, allowing you to tailor the components and metal shells to meet your specific project requirements.

Applications:

Electronics Enclosures: Suitable for housing electronic devices, control panels, and instrumentation, our metal shells offer

protection and durability in electronic applications.

Automotive Components: Ideal for manufacturing brackets, mounts, and structural components for vehicles, ensuring reliability and durability in demanding automotive environments.

Industrial Machinery: Used in industrial machinery for manufacturing components such as enclosures, frames, and panels, providing robust support and protection in demanding environments.

Why Choose Us?

Experience and Expertise: With years of experience in metal fabrication, our team has the knowledge and expertise to deliver high-quality components and metal shells that meet your exact specifications and performance requirements.

State-of-the-Art Facilities: Our modern fabrication facilities are equipped with advanced machinery and technology, allowing us to execute complex projects with precision and efficiency.

Customer-Centric Approach: We prioritize customer satisfaction and strive to exceed your expectations with every order, offering responsive communication, personalized service, and on-time delivery.

Elevate your projects with our factory direct sales of stamping sheet metal laser cutting parts and metal shell manufacturing service. Contact us today to discuss your requirements and discover how we can help bring your projects to life with precision and reliability.



Shenzhen Dongfeng Shengshi Hardware products Co., LTD



18682375931



905004489@qq.com



metalstamp-parts.com

Building 3, No.8 Zhenxing Road, Loucun Community, Xinhua Street, Guangming District, Shenzhen