



Stainless steel precision hinge processing, customized hinge manufacturing

Our Product Introduction

Basic Information

- Place of Origin: China
- Minimum Order Quantity: 1000
- Price: \$ +1~10+Pcs
- Delivery Time: 15-20
- Payment Terms: L/C, D/A, D/P, T/T, Western Union, MoneyGram
- Supply Ability: 3000+pcs+Month



Product Specification

- Color: Customized Color
- Product Name: Hydraulic Furniture Hinge Cabinet Hinge, south American Market Hot Sale Take Apart Door Hinge H Hinge
- Name: American Hinge, Kitchen Hydraulic Cabinet Hinge, Clip On Soft Closing Hinge American Type
- Weight: Customized
- Specifications: L150*W36mm
- Material Thickness: 1.5mm
- Material: SUS304-CP-2B
- Axis: $\varnothing 5.0 \times L69.9\text{mm}$
- Highlight: **Stainless Steel Precision Machining Hinge, Machined Custom Hinge Fabrication, Machining Hinge Fabrication**



Product Description

Our Product Introduction

for more products please visit us on metalstamp-parts.com

Shenzhen Dongfeng Shengshi Hardware products Co., LTD

Choose us

Combining affordability
and quality



Original price
sales



Multiple
specifications



Sufficient
raw materials



Fast
processing



Exquisite
craftsmanship



Invoicable



Material

SUS304-CP-2B

Delivery time

20days

Price

\$1~10/pcs

Material thickness

1.5mm

specifications

L150*W36mm

axis

ø
5.0*L69.9mm

About Us

Direct wholesale, self-produced and self sold



Shenzhen Dongfeng Shengshi Hardware products Co., LTD



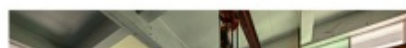
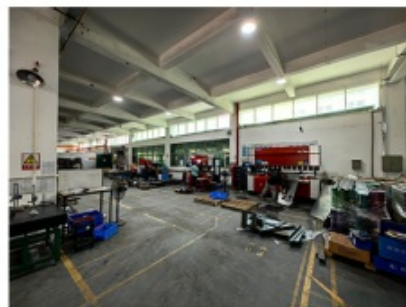
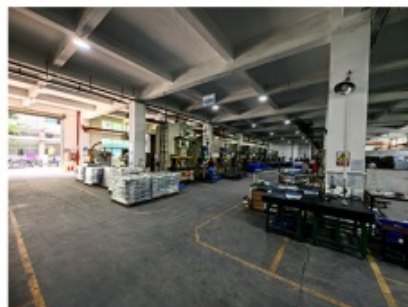
Company Profile



Shenzhen Dongfeng Shengshi Hardware Products Co., Ltd. was established in 2003 and is an ISO9001 certified factory. The company has been committed to the research and development, production and sales of hardware molds, ATM components, precision hinges, tapping parts, mechanical components, heat sinks, display hooks, and anti-theft series products. The company's main markets include North America, South America, Europe, Japan, Australia, and mainland China.

The company has complete equipment, mainly including: 48 large and small punches, 40 hand beer machines, 20 tapping machines, 25 drilling machines, 15 machining equipment, 6 lathes, 8 milling machines, 4 wire cutting machines, 5 precision grinders, CNC machining centers, spark machines, three production lines, and the quality management department's projectors, anemometer/cubic, hardness meters, altimeters, film thickness testers and other testing equipment.

The company adheres to the corporate tenet of "customer centeredness, quality as the foundation, continuous improvement and innovation, and continuous provision of high-quality products", constantly explores and strives to establish a good external image for the prosperous era of Dongfeng. We warmly welcome people from all walks of life to establish cooperative relationships with our company, work hand in hand, and create brilliance together!





After sales instructions



1. Are you a factory?

A: Yes, we are a factory with 21 years of experience, dedicated to the research and development, production, and sales of hardware molds, ATM components, precision hinges, stamping parts, mechanical components, heat sinks, display hooks, and anti-theft series products. Our main markets include North America, South America, Europe, Japan, Australia, and mainland China

2. What about the lead time?

A: 15-30 working days for mass production.

3. Do you have any MOQ limit for

A: Low MOQ, 1pc for sample checking is available.

4. How do you ship the goods and how long does it take to arrive?

A: Ship by DHL, UPS, FedEx or TNT. It takes 3-5 days to arrive. Airline and sea shipping also optional.

5. How to proceed an order for?

- 1) Firstly let us know your requirements or application.
- 2) Secondly We quote according to your requirements or our suggestions.
- 3) Thirdly customer confirms the samples and places deposit for formal order.
- 4) Fourthly We arrange the production.

6. what to be clearly indicated when I send you drawing?

A: You are kindly requested to let us know the raw material, finish and quantity at least.

7: What if we are not completely satisfied with the parts we re-

A: We will replace any parts that you are not satisfied with free of charge. If we make a mistake, we will work with you to correct it.



Factory



+ Factory supply

After sale



+ Multiple specifications

Examination



+ well stocked

Specifications



+ On time delivery

High quality



+ Integrity

Tailor-made



+ Support

Item	Description
Product Name	Stainless Steel Precision Machining Hinge Machined Custom Hinge Fabrication
Working Process	Blanking, stamping, Punching, deep drawing, bending, Coining, Curling, Forming, threading, welding, tapping, riveting, cnc machining, CNC Milling
Material	carbon steel, Stainless steel Aluminum, copper, brass, bronze (according to customer's requirements)
Surface Treatment	Galvanized, Zinc, nickel, chrome-plated, Powder Coating, Polishing, Spraying, Anodizing, Pickling, E-coating, etc.
Packing	Inner-Plastic Bag; Outer -Standard Carton Box + Pallet/Wood Case
Application	Automobiles, Construction, Transportation, Furniture, machinery, home appliance, electronic & electric appliance, Agricultural Equipments
Equipments	stamping/punching machine, CNC bending machine, CNC Laser cutting machine, 5-250T punching machines, Welding Manapulator
Thickness	0.5mm~12mm
File Format	Solidworks, Pro/Engineer, Auto CAD, PDF, JPG
Service	Warm and quick response service provided by the professional Export Sales Team with many years' experience in handling exports to the US, Europe, Japan and other countries and regions.
Inspection	100% QC as to each products

Introduction: Step into the world of precision craftsmanship with our custom stainless steel machined hinges. Crafted with meticulous attention to detail and uncompromising quality, our hinges offer the perfect blend of durability, functionality, and aesthetic appeal.

Exceptional Stainless Steel Quality: We start with premium-grade stainless steel, renowned for its strength, corrosion resistance, and longevity. This high-quality material ensures that our hinges withstand the test of time, maintaining their performance and appearance even in challenging environments.

Precision Machining for Perfect Fit: Our state-of-the-art machining processes enable us to achieve precision cuts and tight tolerances, ensuring that each hinge is crafted to perfection. Whether it's complex shapes, intricate designs, or custom specifications, our precision machining delivers hinges that fit seamlessly and function flawlessly.

Customization Tailored to Your Needs: We understand that every project is unique, which is why we offer a wide range of customization options. From size and shape to finish and features, our team works closely with you to create hinges that meet your exact requirements and complement your design vision.

Versatile Applications Across Industries: Our stainless steel machined hinges find applications across a diverse range of industries, including aerospace, automotive, marine, and more. Whether you need hinges for doors, cabinets, machinery, or specialized equipment, our versatile solutions are designed to meet the demands of your specific application.

Uncompromising Quality Assurance: Quality is ingrained in every step of our manufacturing process. We adhere to rigorous quality control measures to ensure that each hinge meets our stringent standards of craftsmanship and performance. From material selection to final inspection, we take pride in delivering hinges of uncompromising quality and reliability.

Collaborative Partnership for Success: We believe in fostering collaborative partnerships with our clients, prioritizing open communication and transparency throughout the project. Our dedicated team works closely with you to understand your needs and objectives, ensuring that we deliver hinges that not only meet but exceed your expectations.

Contact Us Today: Ready to elevate your projects with custom stainless steel precision machined hinges? Contact us today to discuss your requirements and discover how our craftsmanship and quality can bring your vision to life. With our expertise and dedication to excellence, we're here to provide hinges that meet the highest standards of performance and satisfaction.



18682375931



905004489@qq.com



metalstamp-parts.com

Building 3, No.8 Zhenxing Road, Loucun Community, Xihu Street, Guangming District, Shenzhen